

**NUAK2 Antibody**  
**Mouse Monoclonal Antibody (Mab)**  
**Catalog # AM1988b**

**Specification**

---

**NUAK2 Antibody - Product Information**

Application	WB,E
Primary Accession	<a href="#">O9H093</a>
Other Accession	<a href="#">NP_112214.1</a>
Reactivity	Human
Host	Mouse
Clonality	Monoclonal
Isotype	IgM
Calculated MW	69612

**NUAK2 Antibody - Additional Information**

**Gene ID** 81788

**Other Names**

NUAK family SNF1-like kinase 2, Omphalocele kinase 2, SNF1/AMP kinase-related kinase, SNARK, NUAK2 {ECO:0000312|EMBL:AAH173061}, OMPHK2, SNARK

**Target/Specificity**

Purified His-tagged NUAK2 protein(Fragment) was used to produced this monoclonal antibody.

**Dilution**

WB~~1:500~1000

**Format**

Purified monoclonal antibody supplied in PBS with 0.09% (W/V) sodium azide. This antibody is prepared by Euglobin precipitation followed by dialysis against PBS.

**Storage**

Maintain refrigerated at 2-8°C for up to 2 weeks. For long term storage store at -20°C in small aliquots to prevent freeze-thaw cycles.

**Precautions**

NUAK2 Antibody is for research use only and not for use in diagnostic or therapeutic procedures.

**NUAK2 Antibody - Protein Information**

**Name** NUAK2 {ECO:0000312|EMBL:AAH17306.1}

**Synonyms** OMPHK2, SNARK

**Function** Stress-activated kinase involved in tolerance to glucose starvation. Induces cell-cell detachment by increasing F-actin conversion to G-actin. Expression is induced by CD95 or

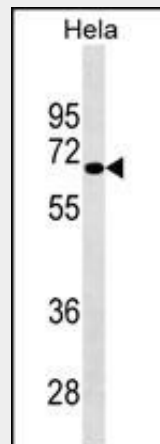
TNF-alpha, via NF-kappa-B. Protects cells from CD95-mediated apoptosis and is required for the increased motility and invasiveness of CD95-activated tumor cells. Phosphorylates LATS1 and LATS2. Plays a key role in neural tube closure during embryonic development through LATS2 phosphorylation and regulation of the nuclear localization of YAP1 a critical downstream regulatory target in the Hippo signaling pathway (PubMed:[32845958](#)).

### **NUAK2 Antibody - Protocols**

Provided below are standard protocols that you may find useful for product applications.

- [Western Blot](#)
- [Blocking Peptides](#)
- [Dot Blot](#)
- [Immunohistochemistry](#)
- [Immunofluorescence](#)
- [Immunoprecipitation](#)
- [Flow Cytometry](#)
- [Cell Culture](#)

### **NUAK2 Antibody - Images**



NUAK2 Antibody (Cat. #AM1988b) western blot analysis in HeLa cell line lysates (35µg/lane). This demonstrates the NUA2 antibody detected the NUA2 protein (arrow).

### **NUAK2 Antibody - Background**

Stress-activated kinase involved in tolerance to glucose starvation. Induces cell-cell detachment by increasing F-actin conversion to G-actin. Expression is induced by CD95 or TNF-alpha, via NF-kappa-B. Protects cells from CD95-mediated apoptosis and is required for the increased motility and invasiveness of CD95-activated tumor cells.

### **NUAK2 Antibody - References**

- Koh, H.J., et al. Proc. Natl. Acad. Sci. U.S.A. 107(35):15541-15546(2010)  
Rune, A., et al. Diabetologia 52(10):2182-2189(2009)  
Kuga, W., et al. Biochem. Biophys. Res. Commun. 377(4):1062-1066(2008)  
Kim, J.H., et al. Leuk. Lymphoma 49(7):1392-1398(2008)  
Yamamoto, H., et al. Biochem. Biophys. Res. Commun. 365(3):541-547(2008)