

THAP11 Antibody (Center)
Mouse Monoclonal Antibody (Mab)
Catalog # AM1984b

Specification

THAP11 Antibody (Center) - Product Information

Application	WB,E
Primary Accession	O96EK4
Other Accession	A5PKF5 , NP_065190.2
Reactivity	Human, Mouse
Predicted	Bovine
Host	Mouse
Clonality	Monoclonal
Isotype	IgM
Calculated MW	34455
Antigen Region	165-193

THAP11 Antibody (Center) - Additional Information

Gene ID 57215

Other Names

THAP domain-containing protein 11, THAP11

Target/Specificity

This THAP11 antibody is generated from mice immunized with a KLH conjugated synthetic peptide between 165-193 amino acids from the Central region of human THAP11.

Dilution

WB~~1:500~1000

Format

Purified monoclonal antibody supplied in PBS with 0.09% (W/V) sodium azide. This antibody is prepared by Euglobin precipitation followed by dialysis against PBS.

Storage

Maintain refrigerated at 2-8°C for up to 2 weeks. For long term storage store at -20°C in small aliquots to prevent freeze-thaw cycles.

Precautions

THAP11 Antibody (Center) is for research use only and not for use in diagnostic or therapeutic procedures.

THAP11 Antibody (Center) - Protein Information

Name THAP11

Function Transcriptional repressor that plays a central role for embryogenesis and the

pluripotency of embryonic stem (ES) cells. Sequence-specific DNA-binding factor that represses gene expression in pluripotent ES cells by directly binding to key genetic loci and recruiting epigenetic modifiers (By similarity).

Cellular Location

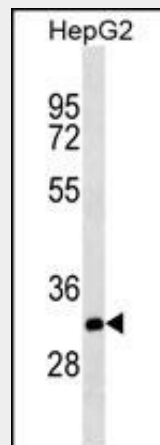
Nucleus. Cytoplasm. Note=May be regulated by shuttling of the protein between the cytoplasm and nucleus.

THAP11 Antibody (Center) - Protocols

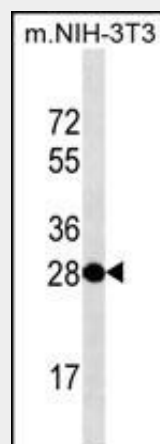
Provided below are standard protocols that you may find useful for product applications.

- [Western Blot](#)
- [Blocking Peptides](#)
- [Dot Blot](#)
- [Immunohistochemistry](#)
- [Immunofluorescence](#)
- [Immunoprecipitation](#)
- [Flow Cytometry](#)
- [Cell Culture](#)

THAP11 Antibody (Center) - Images



THAP11 Antibody (Center) (Cat. #AM1984b) western blot analysis in HepG2 cell line lysates (35µg/lane). This demonstrates the THAP11 antibody detected the THAP11 protein (arrow).



THAP11 Antibody (Center) (Cat. #AM1984b) western blot analysis in mouse NIH-3T3 cell line lysates (35µg/lane). This demonstrates the THAP11 antibody detected the THAP11 protein (arrow).

THAP11 Antibody (Center) - Background

The protein encoded by this gene contains a THAP domain, which is a conserved DNA-binding domain that has striking similarity to the site-specific DNA-binding domain (DBD) of *Drosophila* P element transposases.

THAP11 Antibody (Center) - References

- Zhu, C.Y., et al. *Cell Death Differ.* 16(3):395-405(2009)
- Dejosez, M., et al. *Cell* 133(7):1162-1174(2008)
- Roussigne, M., et al. *Trends Biochem. Sci.* 28(2):66-69(2003)
- Ueki, N., et al. *Nat. Biotechnol.* 16(13):1338-1342(1998)
- Li, S.H., et al. *Genomics* 16(3):572-579(1993)