

**APCS Antibody**  
**Mouse Monoclonal Antibody (Mab)**  
**Catalog # AM1978b**

**Specification**

---

**APCS Antibody - Product Information**

Application	WB,E
Primary Accession	<a href="#">P02743</a>
Other Accession	<a href="#">NP_001630.1</a>
Reactivity	Human
Host	Mouse
Clonality	Monoclonal
Isotype	IgG2a
Calculated MW	25387

**APCS Antibody - Additional Information**

**Gene ID** 325

**Other Names**

Serum amyloid P-component, SAP, 95S alpha-1-glycoprotein, Serum amyloid P-component(1-203), APCS, PTX2

**Target/Specificity**

Purified His-tagged APCS protein(Fragment) was used to produced this monoclonal antibody.

**Dilution**

WB~~1:500~1000

**Format**

Purified polyclonal antibody supplied in PBS with 0.09% (W/V) sodium azide. This antibody is prepared by Saturated Ammonium Sulfate (SAS) precipitation followed by dialysis against PBS.

**Storage**

Maintain refrigerated at 2-8°C for up to 2 weeks. For long term storage store at -20°C in small aliquots to prevent freeze-thaw cycles.

**Precautions**

APCS Antibody is for research use only and not for use in diagnostic or therapeutic procedures.

**APCS Antibody - Protein Information**

**Name** APCS

**Synonyms** PTX2

**Function** Can interact with DNA and histones and may scavenge nuclear material released from damaged circulating cells. May also function as a calcium-dependent lectin.

**Cellular Location**  
Secreted.

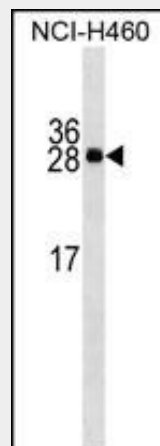
**Tissue Location**  
Found in serum and urine.

### APCS Antibody - Protocols

Provided below are standard protocols that you may find useful for product applications.

- [Western Blot](#)
- [Blocking Peptides](#)
- [Dot Blot](#)
- [Immunohistochemistry](#)
- [Immunofluorescence](#)
- [Immunoprecipitation](#)
- [Flow Cytometry](#)
- [Cell Culture](#)

### APCS Antibody - Images



APCS Antibody (Cat. #AM1978b) western blot analysis in NCI-H460 cell line lysates (35µg/lane). This demonstrates the APCS antibody detected the APCS protein (arrow).

### APCS Antibody - Background

The protein encoded by this gene is a glycoprotein, belonging to the pentraxin family of proteins, which has a characteristic pentameric organization. These family members have considerable sequence homology which is thought to be the result of gene duplication. The binding of the encoded protein to proteins in the pathological amyloid cross-beta fold suggests its possible role as a chaperone. This protein is also thought to control the degradation of chromatin. It has been demonstrated that this protein binds to apoptotic cells at an early stage, which raises the possibility that it is involved in dealing with apoptotic cells in vivo.

### APCS Antibody - References

Song, Z., et al. *Atherosclerosis* 211(1):90-95(2010)  
Davila, S., et al. *Genes Immun.* 11(3):232-238(2010)  
McGeachie, M., et al. *Circulation* 120(24):2448-2454(2009)  
Lu, J., et al. *Nature* 456(7224):989-992(2008)  
Verwey, N.A., et al. *Dement Geriatr Cogn Disord* 26(6):522-527(2008)