

FSHB/FSH Antibody (Center)
Mouse Monoclonal Antibody (Mab)
Catalog # AM1973b**Specification**

FSHB/FSH Antibody (Center) - Product Information

Application	WB,E
Primary Accession	P01225
Other Accession	NP_000501.1 , NP_001018090.1
Reactivity	Human
Host	Mouse
Clonality	Monoclonal
Isotype	IgG3
Antigen Region	36-64

FSHB/FSH Antibody (Center) - Additional Information**Gene ID** 2488**Other Names**

Follitropin subunit beta, Follicle-stimulating hormone beta subunit, FSH-B, FSH-beta, Follitropin beta chain, FSHB

Target/Specificity

This FSHB/FSH antibody is generated from mice immunized with a KLH conjugated synthetic peptide between 36-64 amino acids from the Central region of human FSHB/FSH.

Dilution

WB~~1:150~1500

Format

Purified monoclonal antibody supplied in PBS with 0.09% (W/V) sodium azide. This antibody is purified through a protein G column, followed by dialysis against PBS.

Storage

Maintain refrigerated at 2-8°C for up to 2 weeks. For long term storage store at -20°C in small aliquots to prevent freeze-thaw cycles.

Precautions

FSHB/FSH Antibody (Center) is for research use only and not for use in diagnostic or therapeutic procedures.

FSHB/FSH Antibody (Center) - Protein Information**Name** FSHB**Function** Together with the alpha chain CGA constitutes follitropin, the follicle-stimulating hormone, and provides its biological specificity to the hormone heterodimer. Binds FSHR, a G

protein-coupled receptor, on target cells to activate downstream signaling pathways (PubMed:[24692546](#), PubMed:[2494176](#)). Follitropin is involved in follicle development and spermatogenesis in reproductive organs (PubMed:[407105](#), PubMed:[8220432](#)).

Cellular Location

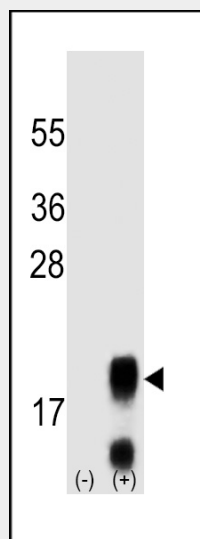
Secreted. Note=Efficient secretion requires dimerization with CGA

FSHB/FSH Antibody (Center) - Protocols

Provided below are standard protocols that you may find useful for product applications.

- [Western Blot](#)
- [Blocking Peptides](#)
- [Dot Blot](#)
- [Immunohistochemistry](#)
- [Immunofluorescence](#)
- [Immunoprecipitation](#)
- [Flow Cytometry](#)
- [Cell Culture](#)

FSHB/FSH Antibody (Center) - Images



Western blot analysis of FSHB/FSH (arrow) using mouse polyclonal FSHB/FSH antibody (Center) (Cat. #AM1973b). 293 cell lysates (2 µg/lane) either nontransfected (Lane 1) or transiently transfected (Lane 2) with the FSHB/FSH gene.

FSHB/FSH Antibody (Center) - Background

The pituitary glycoprotein hormone family includes follicle-stimulating hormone, luteinizing hormone, chorionic gonadotropin, and thyroid-stimulating hormone. All of these glycoproteins consist of an identical alpha subunit and a hormone-specific beta subunit. This gene encodes the beta subunit of follicle-stimulating hormone. In conjunction with luteinizing hormone, follicle-stimulating hormone induces egg and sperm production. Alternative splicing results in two transcript variants encoding the same protein.

FSHB/FSH Antibody (Center) - References

- Canzian, F., et al. Hum. Mol. Genet. 19(19):3873-3884(2010)
Corpuz, P.S., et al. Mol. Endocrinol. 24(5):1037-1051(2010)
Grigorova, M., et al. J. Clin. Endocrinol. Metab. 95(1):100-108(2010)
Ahn, J., et al. Hum. Mol. Genet. 18(19):3749-3757(2009)
Chakrabarti, B., et al. Autism Res 2(3):157-177(2009)