

RCC1 Antibody
Mouse Monoclonal Antibody (Mab)
Catalog # AM1961b

Specification

RCC1 Antibody - Product Information

Application	WB,E
Primary Accession	P18754
Other Accession	NP_001041664.1 , NP_001041659.1 , NP_001260.1
Reactivity	Human, Mouse
Host	Mouse
Clonality	Monoclonal
Isotype	IgG1,k
Calculated MW	44969

RCC1 Antibody - Additional Information

Gene ID 1104

Other Names

Regulator of chromosome condensation, Cell cycle regulatory protein, Chromosome condensation protein 1, RCC1, CHC1

Target/Specificity

This RCC1 monoclonal antibody is generated from mouse immunized with RCC1 recombinant protein.

Dilution

WB~~1:2000-1:4000

Format

Purified monoclonal antibody supplied in PBS with 0.09% (W/V) sodium azide. This antibody is purified through a protein G column, followed by dialysis against PBS.

Storage

Maintain refrigerated at 2-8°C for up to 2 weeks. For long term storage store at -20°C in small aliquots to prevent freeze-thaw cycles.

Precautions

RCC1 Antibody is for research use only and not for use in diagnostic or therapeutic procedures.

RCC1 Antibody - Protein Information

Name RCC1

Synonyms CHC1

Function Guanine-nucleotide releasing factor that promotes the exchange of Ran-bound GDP by GTP, and thereby plays an important role in RAN-mediated functions in nuclear import and mitosis (PubMed:[11336674](#), PubMed:[17435751](#), PubMed:[1944575](#), PubMed:[20668449](#), PubMed:[22215983](#)). Contributes to the generation of high levels of chromosome-associated, GTP-bound RAN, which is important for mitotic spindle assembly and normal progress through mitosis (PubMed:[12194828](#), PubMed:[17435751](#), PubMed:[22215983](#)). Via its role in maintaining high levels of GTP-bound RAN in the nucleus, contributes to the release of cargo proteins from importins after nuclear import (PubMed:[22215983](#)). Involved in the regulation of onset of chromosome condensation in the S phase (PubMed:[3678831](#)). Binds both to the nucleosomes and double-stranded DNA (PubMed:[17435751](#), PubMed:[18762580](#)).

Cellular Location

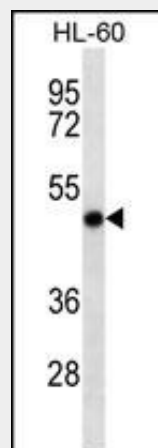
Nucleus. Chromosome. Cytoplasm Note=Predominantly nuclear in interphase cells (PubMed:[12194828](#)). Binds to mitotic chromosomes (PubMed:[12194828](#), PubMed:[17435751](#), PubMed:[20668449](#)).

RCC1 Antibody - Protocols

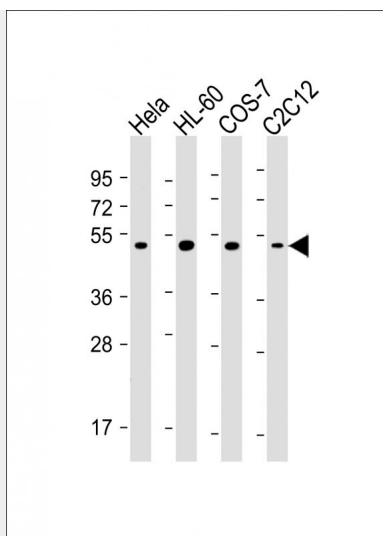
Provided below are standard protocols that you may find useful for product applications.

- [Western Blot](#)
- [Blocking Peptides](#)
- [Dot Blot](#)
- [Immunohistochemistry](#)
- [Immunofluorescence](#)
- [Immunoprecipitation](#)
- [Flow Cytometry](#)
- [Cell Culture](#)

RCC1 Antibody - Images



RCC1 Antibody (Cat. #AM1961b) western blot analysis in HL-60 cell line lysates (35µg/lane). This demonstrates the RCC1 antibody detected the RCC1 protein (arrow).



All lanes : Anti-RCC1 Antibody at 1:2000-1:4000 dilution Lane 1: HeLa whole cell lysate Lane 2: HL-60 whole cell lysate Lane 3: COS-7 whole cell lysate Lane 4: C2C12 whole cell lysate Lysates/proteins at 20 µg per lane. Secondary Goat Anti-mouse IgG, (H+L), Peroxidase conjugated at 1/10000 dilution. Predicted band size : 45 kDa Blocking/Dilution buffer: 5% NFDM/TBST.

RCC1 Antibody - Background

Guanine-nucleotide releasing factor that promotes the exchange of Ran-bound GDP by GTP. Involved in the regulation of onset of chromosome condensation in the S phase. Binds both to the nucleosomes and double-stranded DNA. RCC1-Ran complex (together with other proteins) acts as a component of a signal transmission pathway that detects unreplicated DNA. Plays a key role in nucleo-cytoplasmic transport, mitosis and nuclear-envelope assembly.

RCC1 Antibody - References

Tooley, C.E., et al. Nature 466(7310):1125-1128(2010)
 England, J.R., et al. J. Mol. Biol. 398(4):518-529(2010)
 Wong, C.H., et al. Nat. Cell Biol. 11(1):36-45(2009)
 Ho, C.Y., et al. J. Cell. Biochem. 105(3):835-846(2008)
 Hao, Y., et al. J. Cell Biol. 182(5):827-836(2008)