

NCAM1 Antibody
Mouse Monoclonal Antibody (Mab)
Catalog # AM1960b**Specification**

NCAM1 Antibody - Product Information

Application	WB,E
Primary Accession	P13591
Other Accession	P13595 , NP_000606.3 , NP_001070150.1
Reactivity	Mouse
Host	Mouse
Clonality	Monoclonal
Isotype	IgG1,k
Calculated MW	94574
Antigen Region	830-858

NCAM1 Antibody - Additional Information**Gene ID** 4684**Other Names**

Neural cell adhesion molecule 1, N-CAM-1, NCAM-1, CD56, NCAM1, NCAM

Target/Specificity

This NCAM1 antibody is generated from mice immunized with a KLH conjugated synthetic peptide between 830-858 amino acids from human NCAM1.

Dilution

WB~~1:500~1000

Format

Purified monoclonal antibody supplied in PBS with 0.09% (W/V) sodium azide. This antibody is purified through a protein G column, followed by dialysis against PBS.

Storage

Maintain refrigerated at 2-8°C for up to 2 weeks. For long term storage store at -20°C in small aliquots to prevent freeze-thaw cycles.

Precautions

NCAM1 Antibody is for research use only and not for use in diagnostic or therapeutic procedures.

NCAM1 Antibody - Protein Information**Name** NCAM1 ([HGNC:7656](#))**Synonyms** NCAM**Function** This protein is a cell adhesion molecule involved in neuron- neuron adhesion, neurite

fasciculation, outgrowth of neurites, etc. (Microbial infection) Acts as a receptor for Zika virus.

Cellular Location

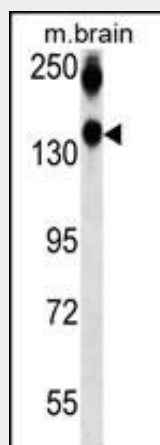
[Isoform 1]: Cell membrane; Single-pass type I membrane protein [Isoform 3]: Cell membrane; Lipid-anchor, GPI- anchor [Isoform 5]: Secreted.

NCAM1 Antibody - Protocols

Provided below are standard protocols that you may find useful for product applications.

- [Western Blot](#)
- [Blocking Peptides](#)
- [Dot Blot](#)
- [Immunohistochemistry](#)
- [Immunofluorescence](#)
- [Immunoprecipitation](#)
- [Flow Cytometry](#)
- [Cell Culture](#)

NCAM1 Antibody - Images



NCAM1 Antibody (Cat. #AM1960b) western blot analysis in mouse brain tissue lysates (35µg/lane). This demonstrates the NCAM1 antibody detected the NCAM1 protein (arrow).

NCAM1 Antibody - Background

This protein is a cell adhesion molecule involved in neuron-neuron adhesion, neurite fasciculation, outgrowth of neurites, etc.

NCAM1 Antibody - References

Foley, D.A., et al. J. Biol. Chem. 285(45):35056-35067(2010)
Bailey, S.D., et al. Diabetes Care 33(10):2250-2253(2010)
Kleene, R., et al. J. Biol. Chem. 285(37):28968-28979(2010)
Bojarska-Junak, A., et al. Oncol. Rep. 24(3):803-810(2010)
Gomyo, H., et al. Hematology 15(3):157-161(2010)