

**LHX2 Antibody**  
**Mouse Monoclonal Antibody (Mab)**  
**Catalog # AM1927b**

**Specification**

---

**LHX2 Antibody - Product Information**

Application	WB,E
Primary Accession	<a href="#">P50458</a>
Other Accession	<a href="#">NP_004780.3</a>
Reactivity	Human
Host	Mouse
Clonality	Monoclonal
Isotype	IgM,k
Calculated MW	44373

**LHX2 Antibody - Additional Information**

**Gene ID** 9355

**Other Names**

LIM/homeobox protein Lhx2, Homeobox protein LH-2, LIM homeobox protein 2, LHX2, LH2

**Target/Specificity**

This LHX2 monoclonal antibody is generated from mouse immunized with LHX2 recombinant protein.

**Dilution**

WB~~1:500~1000

**Format**

Purified monoclonal antibody supplied in PBS with 0.09% (W/V) sodium azide. This antibody is prepared by Euglobin precipitation followed by dialysis against PBS.

**Storage**

Maintain refrigerated at 2-8°C for up to 2 weeks. For long term storage store at -20°C in small aliquots to prevent freeze-thaw cycles.

**Precautions**

LHX2 Antibody is for research use only and not for use in diagnostic or therapeutic procedures.

**LHX2 Antibody - Protein Information**

**Name** LHX2

**Synonyms** LH2

**Function** Acts as a transcriptional activator. Stimulates the promoter of the alpha-glycoprotein gene. Transcriptional regulatory protein involved in the control of cell differentiation in developing

lymphoid and neural cell types (By similarity).

#### Cellular Location

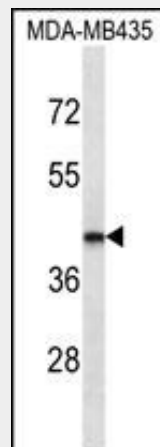
Nucleus.

#### LHX2 Antibody - Protocols

Provided below are standard protocols that you may find useful for product applications.

- [Western Blot](#)
- [Blocking Peptides](#)
- [Dot Blot](#)
- [Immunohistochemistry](#)
- [Immunofluorescence](#)
- [Immunoprecipitation](#)
- [Flow Cytometry](#)
- [Cell Culture](#)

#### LHX2 Antibody - Images



LHX2 Antibody (Cat. #AM1927b) western blot analysis in MDA-MB435 cell line lysates (35µg/lane). This demonstrates the LHX2 antibody detected the LHX2 protein (arrow).

#### LHX2 Antibody - Background

This gene encodes a protein belonging to a large protein family, members of which carry the LIM domain, a unique cysteine-rich zinc-binding domain. The encoded protein may function as a transcriptional regulator. The protein can recapitulate or rescue phenotypes in *Drosophila* caused by a related protein, suggesting conservation of function during evolution. [provided by RefSeq].

#### LHX2 Antibody - References

- Cirulli, E.T., et al. *Eur. J. Hum. Genet.* 18(7):815-820(2010)  
Glenn, D.J., et al. *J. Biol. Chem.* 274(51):36159-36167(1999)  
Bach, I., et al. *Nat. Genet.* 22(4):394-399(1999)  
Rincon-Limas, D.E., et al. *Proc. Natl. Acad. Sci. U.S.A.* 96(5):2165-2170(1999)  
Bendall, A.J., et al. *Differentiation* 63(3):151-157(1998)