

RPS6KL1 Antibody
Mouse Monoclonal Antibody (Mab)
Catalog # AM1925b**Specification**

RPS6KL1 Antibody - Product Information

Application	WB,E
Primary Accession	O9Y6S9
Other Accession	NP_113652.1
Reactivity	Hamster, Mouse
Host	Mouse
Clonality	Monoclonal
Isotype	IgM,k
Calculated MW	60036

RPS6KL1 Antibody - Additional Information**Gene ID** 83694**Other Names**

Ribosomal protein S6 kinase-like 1, RPS6KL1

Target/Specificity

This RPS6KL1 monoclonal antibody is generated from mouse immunized with RPS6KL1 recombinant protein.

Dilution

WB~~1:500~1000

Format

Purified monoclonal antibody supplied in PBS with 0.09% (W/V) sodium azide. This antibody is prepared by Euglobin precipitation followed by dialysis against PBS.

Storage

Maintain refrigerated at 2-8°C for up to 2 weeks. For long term storage store at -20°C in small aliquots to prevent freeze-thaw cycles.

Precautions

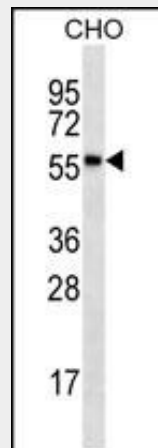
RPS6KL1 Antibody is for research use only and not for use in diagnostic or therapeutic procedures.

RPS6KL1 Antibody - Protein Information**Name** RPS6KL1**RPS6KL1 Antibody - Protocols**

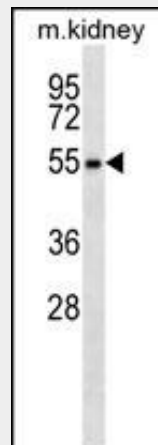
Provided below are standard protocols that you may find useful for product applications.

- [Western Blot](#)
- [Blocking Peptides](#)
- [Dot Blot](#)
- [Immunohistochemistry](#)
- [Immunofluorescence](#)
- [Immunoprecipitation](#)
- [Flow Cytometry](#)
- [Cell Culture](#)

RPS6KL1 Antibody - Images



RPS6KL1 Antibody (Cat. #AM1925b) western blot analysis in CHO cell line lysates (35µg/lane). This demonstrates the RPS6KL1 antibody detected the RPS6KL1 protein (arrow).



RPS6KL1 Antibody (Cat. #AM1925b) western blot analysis in mouse kidney tissue lysates (35µg/lane). This demonstrates the RPS6KL1 antibody detected the RPS6KL1 protein (arrow).

RPS6KL1 Antibody - References

Heilig, R., et al. Nature 421(6923):601-607(2003)