

CSNK2B Antibody
Mouse Monoclonal Antibody (Mab)
Catalog # AM1923b**Specification**

CSNK2B Antibody - Product Information

Application	WB,E
Primary Accession	P67870
Other Accession	P67874 , P67873 , P67872 , P67871 , P67869 , P67868 , NP_001311.3
Reactivity	Human, Mouse
Predicted	Bovine, Chicken, Pig, Rabbit, Rat
Host	Mouse
Clonality	Monoclonal
Isotype	IgG1,k

CSNK2B Antibody - Additional Information**Gene ID** 1460**Other Names**

Casein kinase II subunit beta, CK II beta, Phosvitin, Protein G5a, CSNK2B, CK2N, G5A

Target/Specificity

This CSNK2B monoclonal antibody is generated from mouse immunized with CSNK2B recombinant protein.

Dilution

WB~~1:1000

Format

Purified monoclonal antibody supplied in PBS with 0.09% (W/V) sodium azide. This antibody is purified through a protein G column, followed by dialysis against PBS.

Storage

Maintain refrigerated at 2-8°C for up to 2 weeks. For long term storage store at -20°C in small aliquots to prevent freeze-thaw cycles.

Precautions

CSNK2B Antibody is for research use only and not for use in diagnostic or therapeutic procedures.

CSNK2B Antibody - Protein Information**Name** CSNK2B ([HGNC:2460](#))**Synonyms** CK2N, G5A**Function** Regulatory subunit of casein kinase II/CK2. As part of the kinase complex regulates the

basal catalytic activity of the alpha subunit a constitutively active serine/threonine-protein kinase that phosphorylates a large number of substrates containing acidic residues C-terminal to the phosphorylated serine or threonine (PubMed:[11239457](#), PubMed:[16818610](#)). Participates in Wnt signaling (By similarity).

Cellular Location

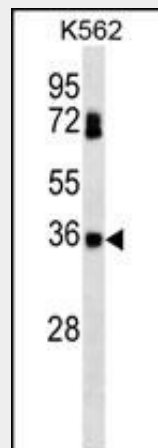
Nucleus.

CSNK2B Antibody - Protocols

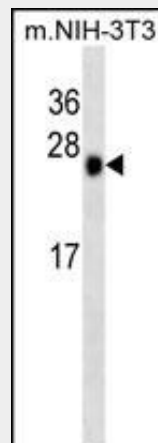
Provided below are standard protocols that you may find useful for product applications.

- [Western Blot](#)
- [Blocking Peptides](#)
- [Dot Blot](#)
- [Immunohistochemistry](#)
- [Immunofluorescence](#)
- [Immunoprecipitation](#)
- [Flow Cytometry](#)
- [Cell Culture](#)

CSNK2B Antibody - Images



CSNK2B Antibody (Cat. #AM1923b) western blot analysis in K562 cell line lysates (35µg/lane). This demonstrates the CSNK2B antibody detected the CSNK2B protein (arrow).



CSNK2B Antibody (Cat. #AM1923b) western blot analysis in mouse NIH-3T3 cell line lysates (35µg/lane). This demonstrates the CSNK2B antibody detected the CSNK2B protein (arrow).

CSNK2B Antibody - Background

This gene encodes the beta subunit of casein kinase II, a ubiquitous protein kinase which regulates metabolic pathways, signal transduction, transcription, translation, and replication. The enzyme is composed of three subunits, alpha, alpha prime and beta, which form a tetrameric holoenzyme. The alpha and alpha prime subunits are catalytic, while the beta subunit serves regulatory functions. The enzyme localizes to the endoplasmic reticulum and the Golgi apparatus.

CSNK2B Antibody - References

Shehata, M., et al. Blood 116(14):2513-2521(2010)
Bailey, S.D., et al. Diabetes Care 33(10):2250-2253(2010)
Olsen, B.B., et al. Int. J. Oncol. 36(5):1175-1182(2010)
Shi, Y., et al. BMB Rep 42(12):840-845(2009)
Talmud, P.J., et al. Am. J. Hum. Genet. 85(5):628-642(2009)