

METAP1 Antibody
Mouse Monoclonal Antibody (Mab)
Catalog # AM1922b**Specification**

METAP1 Antibody - Product Information

Application	IHC, WB,E
Primary Accession	P53582
Other Accession	NP_055958.2
Reactivity	Human
Host	Mouse
Clonality	Monoclonal
Isotype	IgG1,k
Calculated MW	43215

METAP1 Antibody - Additional Information**Gene ID** 23173**Other Names**

Methionine aminopeptidase 1 {ECO:0000255|HAMAP-Rule:MF_03174}, MAP 1 {ECO:0000255|HAMAP-Rule:MF_03174}, MetAP 1 {ECO:0000255|HAMAP-Rule:MF_03174}, 341118 {ECO:0000255|HAMAP-Rule:MF_03174}, Peptidase M 1 {ECO:0000255|HAMAP-Rule:MF_03174}, METAP1, KIAA0094

Target/Specificity

This METAP1 monoclonal antibody is generated from mouse immunized with METAP1 recombinant protein.

Dilution

IHC~~1:4000
WB~~1:500~1000

Format

Purified monoclonal antibody supplied in PBS with 0.09% (W/V) sodium azide. This antibody is purified through a protein G column, followed by dialysis against PBS.

Storage

Maintain refrigerated at 2-8°C for up to 2 weeks. For long term storage store at -20°C in small aliquots to prevent freeze-thaw cycles.

Precautions

METAP1 Antibody is for research use only and not for use in diagnostic or therapeutic procedures.

METAP1 Antibody - Protein Information**Name** METAP1

Synonyms KIAA0094

Function Cotranslationally removes the N-terminal methionine from nascent proteins. The N-terminal methionine is often cleaved when the second residue in the primary sequence is small and uncharged (Met- Ala-, Cys, Gly, Pro, Ser, Thr, or Val). Required for normal progression through the cell cycle.

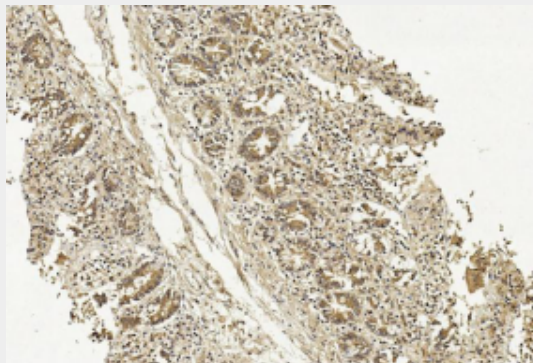
Cellular Location

Cytoplasm {ECO:0000255|HAMAP-Rule:MF_03174}.

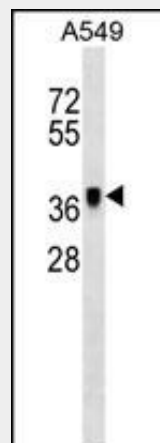
METAP1 Antibody - Protocols

Provided below are standard protocols that you may find useful for product applications.

- [Western Blot](#)
- [Blocking Peptides](#)
- [Dot Blot](#)
- [Immunohistochemistry](#)
- [Immunofluorescence](#)
- [Immunoprecipitation](#)
- [Flow Cytometry](#)
- [Cell Culture](#)

METAP1 Antibody - Images

Immunohistochemical analysis of paraffin-embedded Human Small intestine section using Pink1 (Cat#AM1922b). AM1922b was diluted at 1:4000 dilution. A undiluted biotinylated goat polyvalent antibody was used as the secondary, followed by DAB staining.



METAP1 Antibody (Cat. #AM1922b) western blot analysis in A549 cell line lysates (35µg/lane). This demonstrates the METAP1 antibody detected the METAP1 protein (arrow).

METAP1 Antibody - Background

METAP1 removes the amino-terminal methionine from nascent proteins. Required for normal progression through the cell cycle.

METAP1 Antibody - References

Xiao, Q., et al. Biochemistry 49(26):5588-5599(2010)
Rose, J.E., et al. Mol. Med. 16 (7-8), 247-253 (2010) :
Ross, C.J., et al. Nat. Genet. 41(12):1345-1349(2009)
Hu, X.V., et al. Biochemistry 46(44):12833-12843(2007)
Ewing, R.M., et al. Mol. Syst. Biol. 3, 89 (2007) :