

**CDC25C Antibody**  
**Mouse Monoclonal Antibody (Mab)**  
**Catalog # AM1908b**

**Specification**

---

**CDC25C Antibody - Product Information**

Application	WB,E
Primary Accession	<a href="#">P30307</a>
Other Accession	<a href="#">NP_001781.2</a> , <a href="#">NP_073720.1</a>
Reactivity	Human
Host	Mouse
Clonality	Monoclonal
Isotype	IgG1,k
Calculated MW	53365

**CDC25C Antibody - Additional Information**

**Gene ID** 995

**Other Names**

M-phase inducer phosphatase 3, Dual specificity phosphatase Cdc25C, CDC25C

**Target/Specificity**

This CDC25C monoclonal antibody is generated from mouse immunized with CDC25C recombinant protein.

**Dilution**

WB~~1:100

**Format**

Purified monoclonal antibody supplied in PBS with 0.09% (W/V) sodium azide. This antibody is purified through a protein G column, followed by dialysis against PBS.

**Storage**

Maintain refrigerated at 2-8°C for up to 2 weeks. For long term storage store at -20°C in small aliquots to prevent freeze-thaw cycles.

**Precautions**

CDC25C Antibody is for research use only and not for use in diagnostic or therapeutic procedures.

**CDC25C Antibody - Protein Information**

**Name** CDC25C

**Function** Functions as a dosage-dependent inducer in mitotic control. Tyrosine protein phosphatase required for progression of the cell cycle (PubMed:[8119945](#)). When phosphorylated, highly effective in activating G2 cells into prophase (PubMed:[8119945](#)). Directly dephosphorylates CDK1 and activates its kinase activity (PubMed:[8119945](#)).

## Cellular Location

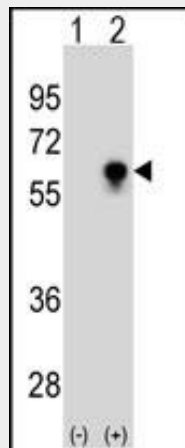
Nucleus

### CDC25C Antibody - Protocols

Provided below are standard protocols that you may find useful for product applications.

- [Western Blot](#)
- [Blocking Peptides](#)
- [Dot Blot](#)
- [Immunohistochemistry](#)
- [Immunofluorescence](#)
- [Immunoprecipitation](#)
- [Flow Cytometry](#)
- [Cell Culture](#)

### CDC25C Antibody - Images



Western blot analysis of CDC25C (arrow) using CDC25C Antibody (Cat. #AM1908b). 293 cell lysates (2  $\mu$ g/lane) either nontransfected (Lane 1) or transiently transfected (Lane 2) with the CDC25C gene.

### CDC25C Antibody - Background

This gene is highly conserved during evolution and it plays a key role in the regulation of cell division. The encoded protein is a tyrosine phosphatase and belongs to the Cdc25 phosphatase family. It directs dephosphorylation of cyclin B-bound CDC2 and triggers entry into mitosis. It is also thought to suppress p53-induced growth arrest. Multiple alternatively spliced transcript variants of this gene have been described, however, the full-length nature of many of them is not known. [provided by RefSeq].

### CDC25C Antibody - References

Moon, D.O., et al. *Oncol. Rep.* 24(1):271-276(2010) Liu, C.Y., et al. *Carcinogenesis* 31(7):1259-1263(2010) Olson, J.E., et al. *Breast Cancer Res. Treat.* (2010) In press : Franckhauser, C., et al. *PLoS ONE* 5 (7), E11798 (2010) : Wang, Z., et al. *BMC Cancer* 10, 233 (2010) :