

CD25 Antibody
Mouse Monoclonal Antibody (Mab)
Catalog # AM1900a

Specification

CD25 Antibody - Product Information

Application	WB,E
Primary Accession	P01589
Other Accession	NP_000408.1
Reactivity	Human
Host	Mouse
Clonality	Monoclonal
Isotype	IgG2a

CD25 Antibody - Additional Information

Gene ID 3559

Other Names

Interleukin-2 receptor subunit alpha, IL-2 receptor subunit alpha, IL-2-RA, IL-2R subunit alpha, IL2-RA, TAC antigen, p55, CD25, IL2RA

Target/Specificity

Purified His-tagged CD25 protein(Fragment) was used to produced this monoclonal antibody.

Dilution

WB~~1:500~1000

Format

Mouse monoclonal antibody supplied in crude ascites with 0.09% (W/V) sodium azide.

Storage

Maintain refrigerated at 2-8°C for up to 2 weeks. For long term storage store at -20°C in small aliquots to prevent freeze-thaw cycles.

Precautions

CD25 Antibody is for research use only and not for use in diagnostic or therapeutic procedures.

CD25 Antibody - Protein Information

Name IL2RA

Function Receptor for interleukin-2. The receptor is involved in the regulation of immune tolerance by controlling regulatory T cells (TREGs) activity. TREGs suppress the activation and expansion of autoreactive T-cells.

Cellular Location

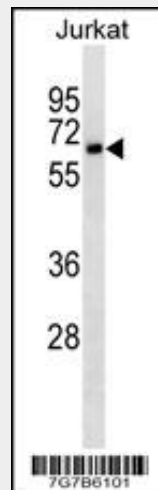
Membrane; Single-pass type I membrane protein.

CD25 Antibody - Protocols

Provided below are standard protocols that you may find useful for product applications.

- [Western Blot](#)
- [Blocking Peptides](#)
- [Dot Blot](#)
- [Immunohistochemistry](#)
- [Immunofluorescence](#)
- [Immunoprecipitation](#)
- [Flow Cytometry](#)
- [Cell Culture](#)

CD25 Antibody - Images



CD25 Antibody (Cat. #AM1900a) western blot analysis in Jurkat cell line lysates (35µg/lane). This demonstrates the CD25 antibody detected the CD25 protein (arrow).

CD25 Antibody - Background

The interleukin 2 (IL2) receptor alpha (IL2RA) and beta (IL2RB) chains, together with the common gamma chain (IL2RG), constitute the high-affinity IL2 receptor. Homodimeric alpha chains (IL2RA) result in low-affinity receptor, while homodimeric beta (IL2RB) chains produce a medium-affinity receptor. Normally an integral-membrane protein, soluble IL2RA has been isolated and determined to result from extracellular proteolysis.

Alternately-spliced IL2RA mRNAs have been isolated, but the significance of each is presently unknown. Mutations in this gene are associated with interleukin 2 receptor alpha deficiency.

CD25 Antibody - References

- Rodriguez-Rodriguez, L., et al. J. Rheumatol. 37(11):2331-2333(2010)
Romero, R., et al. Am. J. Obstet. Gynecol. 203 (4), 361 (2010) :
Bailey, S.D., et al. Diabetes Care 33(10):2250-2253(2010)
Ban, Y., et al. Thyroid 20(8):893-899(2010)

Bottema, R.W., et al. J. Allergy Clin. Immunol. 126(2):338-346(2010)