

**CAB39 Antibody**  
**Mouse Monoclonal Antibody (Mab)**  
**Catalog # AM1874b**

**Specification**

---

**CAB39 Antibody - Product Information**

Application	WB,E
Primary Accession	<a href="#">O9Y376</a>
Other Accession	<a href="#">Q29RI6</a> , <a href="#">NP_001124321.1</a> , <a href="#">NP_001124322.1</a>
Reactivity	Human, Mouse
Predicted	Bovine
Host	Mouse
Clonality	Monoclonal
Isotype	IgG1,K
Calculated MW	39869

**CAB39 Antibody - Additional Information**

**Gene ID** 51719

**Other Names**

Calcium-binding protein 39, MO25alpha, Protein Mo25, CAB39, MO25

**Target/Specificity**

This CAB39 monoclonal antibody is generated from mouse immunized with CAB39 recombinant protein.

**Dilution**

WB~~1:1000

**Format**

Purified monoclonal antibody supplied in PBS with 0.09% (W/V) sodium azide. This antibody is purified through a protein G column, followed by dialysis against PBS.

**Storage**

Maintain refrigerated at 2-8°C for up to 2 weeks. For long term storage store at -20°C in small aliquots to prevent freeze-thaw cycles.

**Precautions**

CAB39 Antibody is for research use only and not for use in diagnostic or therapeutic procedures.

**CAB39 Antibody - Protein Information**

**Name** CAB39

**Synonyms** MO25

**Function** Component of a complex that binds and activates STK11/LKB1. In the complex, required

to stabilize the interaction between CAB39/MO25 (CAB39/MO25alpha or CAB39L/MO25beta) and STK11/LKB1.

#### Cellular Location

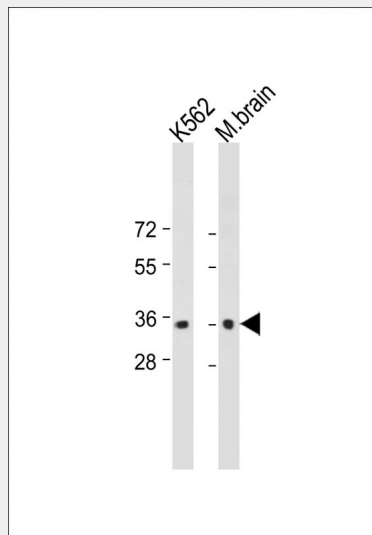
Cytoplasm.

#### CAB39 Antibody - Protocols

Provided below are standard protocols that you may find useful for product applications.

- [Western Blot](#)
- [Blocking Peptides](#)
- [Dot Blot](#)
- [Immunohistochemistry](#)
- [Immunofluorescence](#)
- [Immunoprecipitation](#)
- [Flow Cytometry](#)
- [Cell Culture](#)

#### CAB39 Antibody - Images



All lanes : Anti-CAB39 at 1:1000 dilution Lane 1: K562 whole cell lysate Lane 2: Mouse brain whole cell lysate Lysates/proteins at 20 µg per lane. Secondary Goat Anti-mouse IgG, (H+L), Peroxidase conjugated at 1/10000 dilution. Predicted band size : 40 kDa Blocking/Dilution buffer: 5% NFD/MTBST.

#### CAB39 Antibody - Background

Together with the STE20-related adaptor-alpha (STRAD alpha) pseudo kinase, forms a regulatory complex capable of stimulating the activity of STK11.

#### CAB39 Antibody - References

Zeqiraj, E., et al. Science 326(5960):1707-1711(2009)  
Zeqiraj, E., et al. PLoS Biol. 7 (6), E1000126 (2009) :  
ten Klooster, J.P., et al. Dev. Cell 16(4):551-562(2009)  
Fogarty, S., et al. J. Biol. Chem. 284(1):77-84(2009)

Ewing, R.M., et al. Mol. Syst. Biol. 3, 89 (2007) :