

**THEM2 Antibody**  
**Mouse Monoclonal Antibody (Mab)**  
Catalog # AM1860b**Specification**

---

**THEM2 Antibody - Product Information**

Application	WB,E
Primary Accession	<a href="#">O9NPJ3</a>
Reactivity	Human
Host	Mouse
Clonality	Monoclonal
Isotype	IgG1,K
Calculated MW	14960

**THEM2 Antibody - Additional Information****Gene ID** 55856**Other Names**

Acyl-coenzyme A thioesterase 13, Acyl-CoA thioesterase 13, 312-, Thioesterase superfamily member 2, Acyl-coenzyme A thioesterase 13, N-terminally processed, ACOT13, THEM2

**Target/Specificity**

This THEM2 monoclonal antibody is generated from mouse immunized with THEM2 recombinant protein.

**Dilution**

WB~~1:1000

**Format**

Purified monoclonal antibody supplied in PBS with 0.09% (W/V) sodium azide. This antibody is purified through a protein G column, followed by dialysis against PBS.

**Storage**

Maintain refrigerated at 2-8°C for up to 2 weeks. For long term storage store at -20°C in small aliquots to prevent freeze-thaw cycles.

**Precautions**

THEM2 Antibody is for research use only and not for use in diagnostic or therapeutic procedures.

**THEM2 Antibody - Protein Information****Name** ACOT13 ([HGNC:20999](#))**Synonyms** THEM2**Function** Catalyzes the hydrolysis of acyl-CoAs into free fatty acids and coenzyme A (CoASH), regulating their respective intracellular levels (PubMed:[16934754](#), PubMed:[19170545](#)). Has

acyl-CoA thioesterase activity towards medium (C12) and long-chain (C18) fatty acyl-CoA substrates (By similarity) (PubMed:[16934754](#), PubMed:[19170545](#)). Can also hydrolyze 3-hydroxyphenylacetyl-CoA and 3,4-dihydroxyphenylacetyl-CoA (in vitro) (By similarity) (PubMed:[16934754](#), PubMed:[19170545](#)). May play a role in controlling adaptive thermogenesis (By similarity).

#### Cellular Location

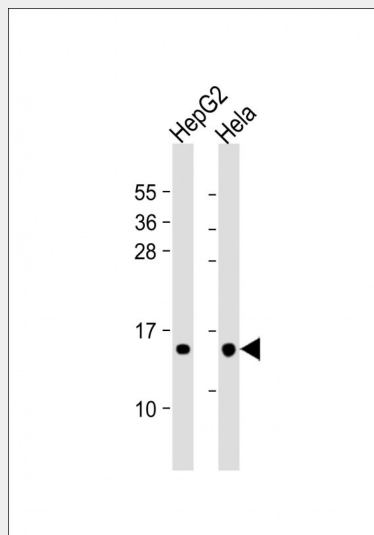
Cytoplasm, cytosol {ECO:0000250|UniProtKB:Q9CQR4}. Mitochondrion {ECO:0000250|UniProtKB:Q9CQR4}. Nucleus {ECO:0000250|UniProtKB:Q9CQR4} Cytoplasm, cytoskeleton, spindle {ECO:0000250|UniProtKB:Q9CQR4} Note=During interphase, found both in the nucleus and in the cytoplasm At mitosis, localizes to the spindle. Colocalizes with tubulin {ECO:0000250|UniProtKB:Q9CQR4}

#### THEM2 Antibody - Protocols

Provided below are standard protocols that you may find useful for product applications.

- [Western Blot](#)
- [Blocking Peptides](#)
- [Dot Blot](#)
- [Immunohistochemistry](#)
- [Immunofluorescence](#)
- [Immunoprecipitation](#)
- [Flow Cytometry](#)
- [Cell Culture](#)

#### THEM2 Antibody - Images



All lanes : Anti-THEM2 Antibody at 1:1000 dilution Lane 1: HepG2 whole cell lysate Lane 2: HeLa whole cell lysate Lysates/proteins at 20 µg per lane. Secondary Goat Anti-mouse IgG, (H+L), Peroxidase conjugated at 1/10000 dilution. Predicted band size : 15 kDa Blocking/Dilution buffer: 5% NFD/MTBST.

#### THEM2 Antibody - Background

THEM2 belongs to the UPF0152 (paal) family. Its exact function is still undetermined.