

RPS6KB2 Antibody
Mouse Monoclonal Antibody (Mab)
Catalog # AM1854b

Specification

RPS6KB2 Antibody - Product Information

Application	WB,E
Primary Accession	O9UBS0
Other Accession	NP_003943.2
Reactivity	Human, Mouse
Host	Mouse
Clonality	Monoclonal
Isotype	IgG1,K
Calculated MW	53455

RPS6KB2 Antibody - Additional Information

Gene ID 6199

Other Names

Ribosomal protein S6 kinase beta-2, S6K-beta-2, S6K2, 70 kDa ribosomal protein S6 kinase 2, P70S6K2, p70-S6K 2, S6 kinase-related kinase, SRK, Serine/threonine-protein kinase 14B, p70 ribosomal S6 kinase beta, S6K-beta, p70 S6 kinase beta, p70 S6K-beta, p70 S6KB, p70-beta, RPS6KB2, STK14B

Target/Specificity

This RPS6KB2 monoclonal antibody is generated from mouse immunized with RPS6KB2 recombinant protein.

Dilution

WB~~1:1000

Format

Purified monoclonal antibody supplied in PBS with 0.09% (W/V) sodium azide. This antibody is purified through a protein G column, eluted with high and low pH buffers and neutralized immediately, followed by dialysis against PBS.

Storage

Maintain refrigerated at 2-8°C for up to 2 weeks. For long term storage store at -20°C in small aliquots to prevent freeze-thaw cycles.

Precautions

RPS6KB2 Antibody is for research use only and not for use in diagnostic or therapeutic procedures.

RPS6KB2 Antibody - Protein Information

Name RPS6KB2

Synonyms STK14B

Function Phosphorylates specifically ribosomal protein S6 (PubMed:[29750193](#)). Seems to act downstream of mTOR signaling in response to growth factors and nutrients to promote cell proliferation, cell growth and cell cycle progression in an alternative pathway regulated by MEAK7 (PubMed:[29750193](#)).

Cellular Location

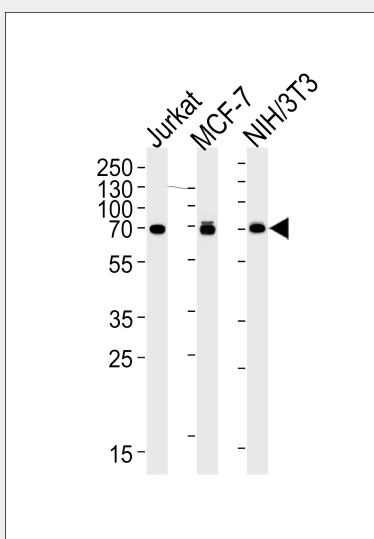
Cytoplasm. Nucleus.

RPS6KB2 Antibody - Protocols

Provided below are standard protocols that you may find useful for product applications.

- [Western Blot](#)
- [Blocking Peptides](#)
- [Dot Blot](#)
- [Immunohistochemistry](#)
- [Immunofluorescence](#)
- [Immunoprecipitation](#)
- [Flow Cytometry](#)
- [Cell Culture](#)

RPS6KB2 Antibody - Images



RPS6KB2 Antibody (Cat.# AM1854b) western blot analysis in Jurkat, MCF-7, mouse NIH/3T3 cell lysates (35µg/lane). This demonstrates that the RPS6KB2 antibody detected RPS6KB2 protein (arrow).

RPS6KB2 Antibody - Background

Phosphorylates specifically ribosomal protein S6.