

**NUCL Antibody**  
**Purified Mouse Monoclonal Antibody (Mab)**  
**Catalog # AM1824a**

**Specification**

---

**NUCL Antibody - Product Information**

Application	IF, WB, IHC-P,E
Primary Accession	<a href="#">P19338</a>
Reactivity	Human
Host	Mouse
Clonality	Monoclonal
Isotype	IgG1?
Calculated MW	76614

**NUCL Antibody - Additional Information**

**Gene ID** 4691

**Other Names**

Nucleolin, Protein C23, NCL

**Target/Specificity**

This NUCL Monoclonal antibody is generated from mice immunized with a protein from human NUCL.

**Dilution**

IF~~1:10~50  
WB~~1:500~1000  
IHC-P~~1:50~100

**Format**

Purified monoclonal antibody supplied in PBS with 0.09% (W/V) sodium azide. This antibody is purified through a protein G column, followed by dialysis against PBS.

**Storage**

Maintain refrigerated at 2-8°C for up to 2 weeks. For long term storage store at -20°C in small aliquots to prevent freeze-thaw cycles.

**Precautions**

NUCL Antibody is for research use only and not for use in diagnostic or therapeutic procedures.

**NUCL Antibody - Protein Information**

**Name** NCL

**Function** Nucleolin is the major nucleolar protein of growing eukaryotic cells. It is found associated with intranucleolar chromatin and pre-ribosomal particles. It induces chromatin decondensation by binding to histone H1. It is thought to play a role in pre-rRNA transcription and

ribosome assembly. May play a role in the process of transcriptional elongation. Binds RNA oligonucleotides with 5'-UUAGGG- 3' repeats more tightly than the telomeric single-stranded DNA 5'- TTAGGG-3' repeats.

#### Cellular Location

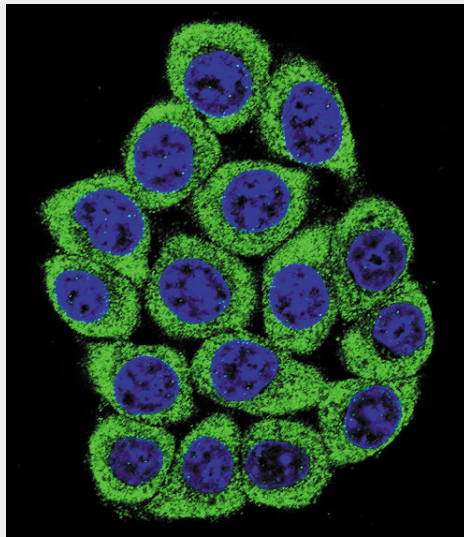
Nucleus, nucleolus. Cytoplasm. Note=Localized in cytoplasmic mRNP granules containing untranslated mRNAs

#### NUCL Antibody - Protocols

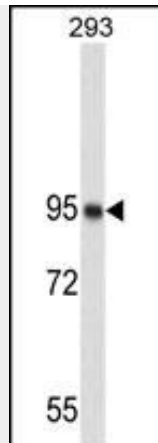
Provided below are standard protocols that you may find useful for product applications.

- [Western Blot](#)
- [Blocking Peptides](#)
- [Dot Blot](#)
- [Immunohistochemistry](#)
- [Immunofluorescence](#)
- [Immunoprecipitation](#)
- [Flow Cytometry](#)
- [Cell Culture](#)

#### NUCL Antibody - Images



Confocal immunofluorescent analysis of NUCL Antibody(Cat#AM1824a) with 293 cell followed by Alexa Fluor® 488-conjugated goat anti-mouse IgG (green). DAPI was used to stain the cell nuclear (blue).



Western blot analysis of NUCL Antibody (Cat. #AM1824a) in 293 cell line lysates (35µg/lane). NUCL (arrow) was detected using the purified Mab.



NUCL Monoclonal Antibody (Cat. #AM1824A) immunohistochemistry analysis in formalin fixed and paraffin embedded human skeletal muscle followed by peroxidase conjugation of the secondary antibody and DAB staining. This data demonstrates the use of NUCL Monoclonal Antibody for immunohistochemistry. Clinical relevance has not been evaluated.

### **NUCL Antibody - Background**

Nucleolin (NCL), a eukaryotic nucleolar phosphoprotein, is involved in the synthesis and maturation of ribosomes. It is located mainly in dense fibrillar regions of the nucleolus. Human NCL gene consists of 14 exons with 13 introns and spans approximately 11kb. The intron 11 of the NCL gene encodes a small nucleolar RNA, termed U20.

### **NUCL Antibody - References**

Ishimaru, D., et al. J. Biol. Chem. 285(35):27182-27191(2010) Tulchin, N., et al. Am. J. Pathol. 176(3):1203-1214(2010) Strang, B.L., et al. J. Virol. 84(4):1771-1784(2010) Bertrand, L., et al. J. Virol. 84(1):109-118(2010) Jerke, U., et al. PLoS ONE 4 (12), E8302 (2009)