

DRP-2 Antibody
Mouse Monoclonal Antibody (Mab)
Catalog # AM1131a

Specification

DRP-2 Antibody - Product Information

Application	WB,E
Primary Accession	O16555
Other Accession	P47942 , O08553 , O90635 , O02675
Reactivity	Human, Mouse
Predicted	Bovine, Chicken, Rat
Host	Mouse
Clonality	Monoclonal
Isotype	IgG2b
Antigen Region	463-492

DRP-2 Antibody - Additional Information

Gene ID 1808

Other Names

Dihydropyrimidinase-related protein 2, DRP-2, Collapsin response mediator protein 2, CRMP-2, N2A3, Unc-33-like phosphoprotein 2, ULIP-2, DPYSL2, CRMP2, ULIP2

Target/Specificity

This DRP-2 antibody is generated from mice immunized with a KLH conjugated synthetic peptide between 463-492 amino acids from human DRP-2.

Dilution

WB~~1:8000

Format

Purified monoclonal antibody supplied in PBS with 0.09% (W/V) sodium azide. This antibody is purified through a protein G column, followed by dialysis against PBS.

Storage

Maintain refrigerated at 2-8°C for up to 2 weeks. For long term storage store at -20°C in small aliquots to prevent freeze-thaw cycles.

Precautions

DRP-2 Antibody is for research use only and not for use in diagnostic or therapeutic procedures.

DRP-2 Antibody - Protein Information

Name DPYSL2

Synonyms CRMP2, ULIP2

Function Plays a role in neuronal development and polarity, as well as in axon growth and guidance, neuronal growth cone collapse and cell migration. Necessary for signaling by class 3 semaphorins and subsequent remodeling of the cytoskeleton. May play a role in endocytosis.

Cellular Location

Cytoplasm, cytosol. Cytoplasm, cytoskeleton. Membrane. Note=Tightly but non-covalently associated with membranes

Tissue Location

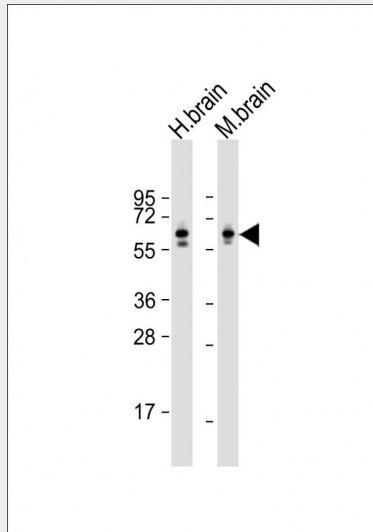
Ubiquitous.

DRP-2 Antibody - Protocols

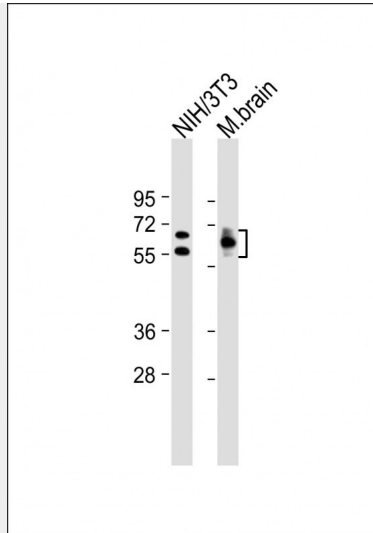
Provided below are standard protocols that you may find useful for product applications.

- [Western Blot](#)
- [Blocking Peptides](#)
- [Dot Blot](#)
- [Immunohistochemistry](#)
- [Immunofluorescence](#)
- [Immunoprecipitation](#)
- [Flow Cytometry](#)
- [Cell Culture](#)

DRP-2 Antibody - Images



All lanes : Anti-DRP-2 Antibody at 1:128000 dilution Lane 1: human brain lysate Lane 2: mouse brain lysate Lysates/proteins at 20 µg per lane. Secondary Goat Anti-mouse IgG, (H+L), Peroxidase conjugated at 1/10000 dilution. Predicted band size : 62 kDa Blocking/Dilution buffer: 5% NFD/MTBST.



All lanes : Anti-DRP-2 Antibody at 1:8000 dilution Lane 1: NIH/3T3 whole cell lysate Lane 2: Mouse brain lysate Lysates/proteins at 20 µg per lane. Secondary Goat Anti-mouse IgG, (H+L), Peroxidase conjugated at 1/10000 dilution. Predicted band size : 62, 58 kDa Blocking/Dilution buffer: 5% NFDN/TBST.

DRP-2 Antibody - References

A two-stage case-control association study of the dihydropyrimidinase-like 2 gene (DPYSL2) with schizophrenia in Japanese subjects. Koide T, et al. J Hum Genet, 2010 Jul. PMID 20414250.
Sex-specific proteome differences in the anterior cingulate cortex of schizophrenia. Martins-de-Souza D, et al. J Psychiatr Res, 2010 Apr 8. PMID 20381070. Personalized smoking cessation: interactions between nicotine dose, dependence and quit-success genotype score. Rose JE, et al. Mol Med, 2010 Jul-Aug. PMID 20379614. Collapsin response mediator protein-2 regulates neurite formation by modulating tubulin GTPase activity. Chae YC, et al. Cell Signal, 2009 Dec. PMID 19666111. CRMP-2 directly binds to cytoplasmic dynein and interferes with its activity. Arimura N, et al. J Neurochem, 2009 Oct. PMID 19659462.