

**Anti-ACTA2 / Smooth Muscle Actin Antibody**  
**Goat anti Human Polyclonal Antibody**  
**Catalog # ALS18632**

**Specification**

---

**Anti-ACTA2 / Smooth Muscle Actin Antibody - Product Information**

Application	IHC, WB
Primary Accession	<a href="#">P62736</a>
Reactivity	Human
Predicted	Mouse, Rat, Rabbit, Hamster, Monkey, Chicken, Bovine, Dog
Host	Ga
Clonality	Polyclonal

**Anti-ACTA2 / Smooth Muscle Actin Antibody - Additional Information**

**Gene ID 59**

Alias Symbol **ACTA2**

**Other Names**

ACTA2 Antibody, ACTVS Antibody, Alpha-actin-2 Antibody, Alpha-cardiac actin Antibody, AAT6 Antibody, Actin, aortic smooth muscle Antibody, ACTSA Antibody, Smooth Muscle Actin Antibody, MYMY5 Antibody

**Target/Specificity**

Human ACTA2. Variants NP\_001604.1 and NP\_001135417.1 encode the same protein.

**Format**

Tris-buffered saline, pH 7.3, 0.5% BSA, 0.02% sodium azide

**Reconstitution & Storage**

Store at -20°C. Minimize freezing and thawing.

**Precautions**

Anti-ACTA2 / Smooth Muscle Actin Antibody is for research use only and not for use in diagnostic or therapeutic procedures.

**Anti-ACTA2 / Smooth Muscle Actin Antibody - Protein Information**

**Name** ACTA2

**Synonyms** ACTSA, ACTVS

**Function**

Actins are highly conserved proteins that are involved in various types of cell motility and are ubiquitously expressed in all eukaryotic cells.

**Cellular Location**

Cytoplasm, cytoskeleton.

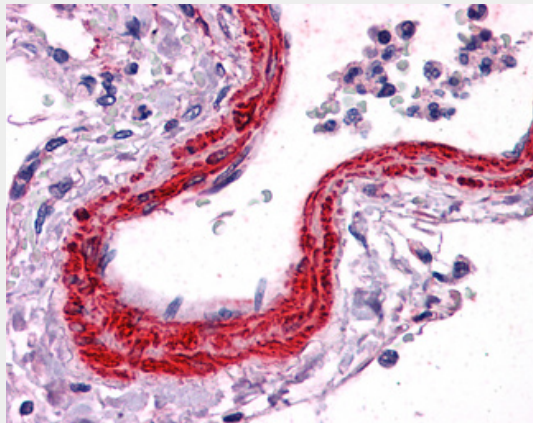
**Volume**  
Array

### **Anti-ACTA2 / Smooth Muscle Actin Antibody - Protocols**

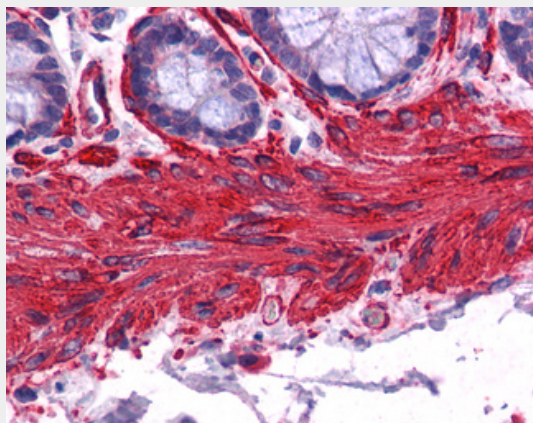
Provided below are standard protocols that you may find useful for product applications.

- [Western Blot](#)
- [Blocking Peptides](#)
- [Dot Blot](#)
- [Immunohistochemistry](#)
- [Immunofluorescence](#)
- [Immunoprecipitation](#)
- [Flow Cytometry](#)
- [Cell Culture](#)

### **Anti-ACTA2 / Smooth Muscle Actin Antibody - Images**



Anti-ACTA2 antibody IHC of human vessel. Immunohistochemistry of formalin-fixed, paraffin-embedded tissue after heat-induced antigen retrieval. Antibody LS-B3933 concentration 2.5 ug/ml.



Anti-ACTA2 antibody IHC of human colon, smooth muscle. Immunohistochemistry of formalin-fixed, paraffin-embedded tissue after heat-induced antigen retrieval. Antibody LS-B3933 concentration 2.5 ug/ml.



Antibody staining (0.1 ug/ml) of Human Duodenum lysate (RIPA buffer, 35 ug total protein per lane). Primary incubated for 1 hour. Detected by Western blot of chemiluminescence.