

Anti-RAB7A / RAB7 Antibody (C-Terminus)
Goat Anti Mouse Polyclonal Antibody
Catalog # ALS17334**Specification**

Anti-RAB7A / RAB7 Antibody (C-Terminus) - Product Information

Application	IHC-P
Primary Accession	P51149
Predicted	Human, Mouse, Rat, Monkey, Dog
Host	Goat
Clonality	Polyclonal
Isotype	IgG
Calculated MW	23490

Anti-RAB7A / RAB7 Antibody (C-Terminus) - Additional Information**Gene ID** 7879**Alias Symbol** RAB7A**Other Names**

RAB7A, CMT2B, PRO2706, RAB7, Ras-associated protein RAB7, Ras-related protein Rab-7a, PSN

Target/Specificity

Detects Rab7a protein in the human, rat and mouse whole cell lysates and transfected cells with GFP-Rab7a by Western blot. This Ab is specific for Rab7a.

Reconstitution & Storage

PBS, 20% glycerol, 0.05% sodium azide. Long term: -20°C; Short term: +4°C; Avoid freeze-thaw cycles.

Precautions

Anti-RAB7A / RAB7 Antibody (C-Terminus) is for research use only and not for use in diagnostic or therapeutic procedures.

Anti-RAB7A / RAB7 Antibody (C-Terminus) - Protein Information**Name** RAB7A ([HGNC:9788](#))**Synonyms** RAB7**Function**

Small GTPase which cycles between active GTP-bound and inactive GDP-bound states. In its active state, binds to a variety of effector proteins playing a key role in the regulation of endo- lysosomal trafficking. Governs early-to-late endosomal maturation, microtubule minus-end as well as plus-end directed endosomal migration and positioning, and endosome-lysosome transport through different protein-protein interaction cascades. Plays a central role, not only in endosomal traffic, but also in many other cellular and physiological events, such as growth-factor-mediated cell signaling, nutrient- transporter mediated nutrient uptake, neurotrophin transport in the axons

of neurons and lipid metabolism. Also involved in regulation of some specialized endosomal membrane trafficking, such as maturation of melanosomes, pathogen-induced phagosomes (or vacuoles) and autophagosomes. Plays a role in the maturation and acidification of phagosomes that engulf pathogens, such as *S.aureus* and *M.tuberculosis*. Plays a role in the fusion of phagosomes with lysosomes. Plays important roles in microbial pathogen infection and survival, as well as in participating in the life cycle of viruses. Microbial pathogens possess survival strategies governed by RAB7A, sometimes by employing RAB7A function (e.g. *Salmonella*) and sometimes by excluding RAB7A function (e.g. *Mycobacterium*). In concert with RAC1, plays a role in regulating the formation of RBs (ruffled borders) in osteoclasts. Controls the endosomal trafficking and neurite outgrowth signaling of NTRK1/TRKA (PubMed:11179213, PubMed:12944476, PubMed:14617358, PubMed:20028791, PubMed:21255211). Regulates the endocytic trafficking of the EGF-EGFR complex by regulating its lysosomal degradation. Involved in the ADRB2-stimulated lipolysis through lipophagy, a cytosolic lipase-independent autophagic pathway (By similarity). Required for the exosomal release of SDCBP, CD63 and syndecan (PubMed:22660413). Required for vesicular trafficking and cell surface expression of ACE2 (PubMed:33147445). May play a role in PRPH neuronal intermediate filament assembly (By similarity).

Cellular Location

Cytoplasmic vesicle, phagosome membrane; Peripheral membrane protein; Cytoplasmic side. Late endosome membrane; Peripheral membrane protein; Cytoplasmic side Lysosome membrane; Peripheral membrane protein; Cytoplasmic side. Melanosome membrane; Peripheral membrane protein; Cytoplasmic side Cytoplasmic vesicle, autophagosome membrane; Peripheral membrane protein; Cytoplasmic side. Lipid droplet {ECO:0000250|UniProtKB:P51150}. Endosome membrane; Peripheral membrane protein. Cytoplasmic vesicle {ECO:0000250|UniProtKB:P51150} Mitochondrion membrane; Peripheral membrane protein. Note=Colocalizes with OSBPL1A at the late endosome (PubMed:16176980). Found in the ruffled border (a late endosomal-like compartment in the plasma membrane) of bone-resorbing osteoclasts. Recruited to phagosomes containing *S.aureus* or *Mycobacterium* (PubMed:21255211). Lipid droplet localization is increased upon ADRB2 stimulation (By similarity). Recruited to damaged mitochondria during mitophagy in a RIMOC1-dependent manner (PubMed:34432599). {ECO:0000250|UniProtKB:P51150, ECO:0000269|PubMed:16176980, ECO:0000269|PubMed:21255211, ECO:0000269|PubMed:34432599}

Tissue Location

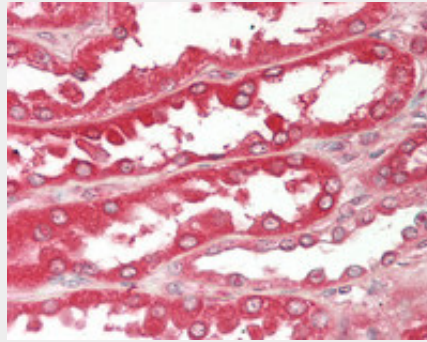
Widely expressed; high expression found in skeletal muscle.

Anti-RAB7A / RAB7 Antibody (C-Terminus) - Protocols

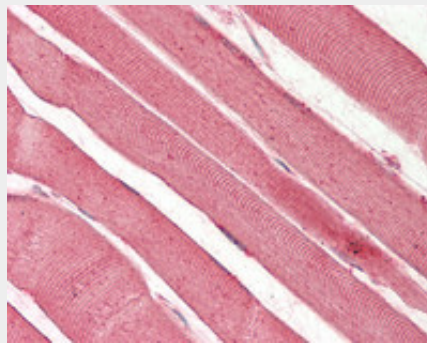
Provided below are standard protocols that you may find useful for product applications.

- [Western Blot](#)
- [Blocking Peptides](#)
- [Dot Blot](#)
- [Immunohistochemistry](#)
- [Immunofluorescence](#)
- [Immunoprecipitation](#)
- [Flow Cytometry](#)
- [Cell Culture](#)

Anti-RAB7A / RAB7 Antibody (C-Terminus) - Images



Human Kidney: Formalin-Fixed, Paraffin-Embedded (FFPE)



Human Skeletal Muscle: Formalin-Fixed, Paraffin-Embedded (FFPE)