

Anti-CXCL11 Antibody
Rabbit Anti Human Polyclonal Antibody
Catalog # ALS17327

Specification

Anti-CXCL11 Antibody - Product Information

Application	IHC-P
Primary Accession	O14625
Predicted	Human
Host	Rabbit
Clonality	Polyclonal
Calculated MW	10365

Anti-CXCL11 Antibody - Additional Information

Gene ID 6373

Alias Symbol CXCL11

Other Names

CXCL11, Beta-R1, Chemokine h174, Chemokine ip-9, Chemokine itac, H174, I-TAC, IP9, ITAC, IP-9, SCYB11, Small inducible cytokine B11, B-R1, C-X-C motif chemokine 11, SCYB9B, Small-inducible cytokine B11

Target/Specificity

Human CXCL11

Reconstitution & Storage

PBS, 0.1% sodium azide, 50% glycerol. Store at 4°C short term. Aliquot and store at -20°C long term. Avoid freeze-thaw cycles.

Precautions

Anti-CXCL11 Antibody is for research use only and not for use in diagnostic or therapeutic procedures.

Anti-CXCL11 Antibody - Protein Information

Name CXCL11

Synonyms ITAC, SCYB11, SCYB9B

Function

Chemotactic for interleukin-activated T-cells but not unstimulated T-cells, neutrophils or monocytes. Induces calcium release in activated T-cells. Binds to CXCR3. May play an important role in CNS diseases which involve T-cell recruitment. May play a role in skin immune responses.

Cellular Location

Secreted.

Tissue Location

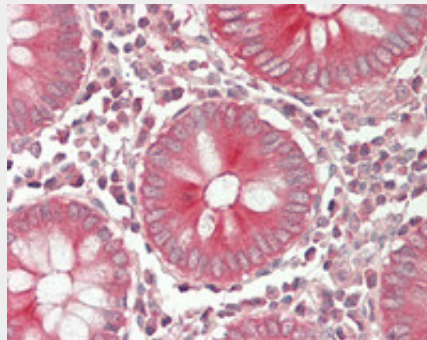
High levels in peripheral blood leukocytes, pancreas and liver astrocytes. Moderate levels in thymus, spleen and lung. Low levels in placenta, prostate and small intestine. Also found in epidermal basal layer keratinocytes in skin disorders

Anti-CXCL11 Antibody - Protocols

Provided below are standard protocols that you may find useful for product applications.

- [Western Blot](#)
- [Blocking Peptides](#)
- [Dot Blot](#)
- [Immunohistochemistry](#)
- [Immunofluorescence](#)
- [Immunoprecipitation](#)
- [Flow Cytometry](#)
- [Cell Culture](#)

Anti-CXCL11 Antibody - Images



Human Colon: Formalin-Fixed, Paraffin-Embedded (FFPE)