

Anti-MLZE Antibody (aa109-158)
Rabbit Anti Human Polyclonal Antibody
Catalog # ALS17321

Specification

Anti-MLZE Antibody (aa109-158) - Product Information

Application	IHC-P
Primary Accession	Q9BYG8
Predicted	Human
Host	Rabbit
Clonality	Polyclonal
Isotype	IgG
Calculated MW	57692

Anti-MLZE Antibody (aa109-158) - Additional Information

Gene ID 56169

Alias Symbol GSDMC
Other Names
GSDMC, Gasdermin C, MLZE, Gasdermin-C

Target/Specificity
GSDMC Antibody detects endogenous levels of GSDMC.

Reconstitution & Storage
PBS, pH 7.4, 150 mM sodium chloride, 0.02% sodium azide, 50% glycerol. Store at -20°C.

Precautions
Anti-MLZE Antibody (aa109-158) is for research use only and not for use in diagnostic or therapeutic procedures.

Anti-MLZE Antibody (aa109-158) - Protein Information

Name GSDMC {ECO:0000303|PubMed:17350798, ECO:0000312|HGNC:HGNC:7151}

Function
[Gasdermin-C]: This form constitutes the precursor of the pore-forming protein: upon cleavage, the released N-terminal moiety (Gasdermin-C, N-terminal) binds to membranes and forms pores, triggering pyroptosis.

Cellular Location
[Gasdermin-C]: Cytoplasm, cytosol

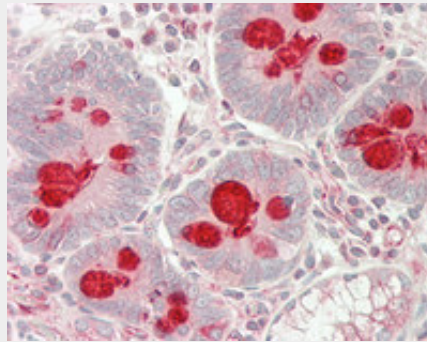
Tissue Location
Expressed mainly in trachea and spleen (PubMed:11223543). In the esophagus, expressed in differentiating cells and probably in differentiated cells. Also detected in gastric epithelium (PubMed:19051310).

Anti-MLZE Antibody (aa109-158) - Protocols

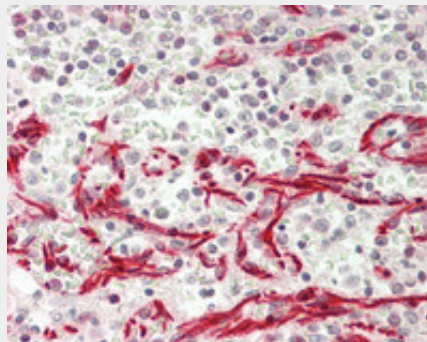
Provided below are standard protocols that you may find useful for product applications.

- [Western Blot](#)
- [Blocking Peptides](#)
- [Dot Blot](#)
- [Immunohistochemistry](#)
- [Immunofluorescence](#)
- [Immunoprecipitation](#)
- [Flow Cytometry](#)
- [Cell Culture](#)

Anti-MLZE Antibody (aa109-158) - Images



Human Small Intestine: Formalin-Fixed, Paraffin-Embedded (FFPE)



Human Spleen: Formalin-Fixed, Paraffin-Embedded (FFPE)