

Anti-APOA1 / Apolipoprotein A 1 Antibody
Mouse Anti Human Monoclonal Antibody
Catalog # ALS17317

Specification

Anti-APOA1 / Apolipoprotein A 1 Antibody - Product Information

Application	IHC-P
Primary Accession	P02647
Predicted	Human
Host	Mouse
Clonality	Monoclonal
Isotype	IgG2a
Calculated MW	30778

Anti-APOA1 / Apolipoprotein A 1 Antibody - Additional Information

Gene ID 335

Alias Symbol **APOA1**
Other Names
APOA1, ApoA-I, APOAI, Apolipoprotein A-I, Apolipoprotein A1, Apo-AI

Target/Specificity
Specific for ApoA1, No cross reaction to Apo AII or Apo B

Reconstitution & Storage
15mM Potassium Phosphate, 0.85% Sodium Chloride, pH 7.5, 0.1% NaN₃ Short term 4°C, long term aliquot and store at -20°C, avoid freeze thaw cycles.

Precautions
Anti-APOA1 / Apolipoprotein A 1 Antibody is for research use only and not for use in diagnostic or therapeutic procedures.

Anti-APOA1 / Apolipoprotein A 1 Antibody - Protein Information

Name APOA1 ([HGNC:600](#))

Function
Participates in the reverse transport of cholesterol from tissues to the liver for excretion by promoting cholesterol efflux from tissues and by acting as a cofactor for the lecithin cholesterol acyltransferase (LCAT). As part of the SPAP complex, activates spermatozoa motility.

Cellular Location
Secreted.

Tissue Location
Major protein of plasma HDL, also found in chylomicrons. Synthesized in the liver and small intestine. The oxidized form at Met-110 and Met-136 is increased in individuals with increased risk

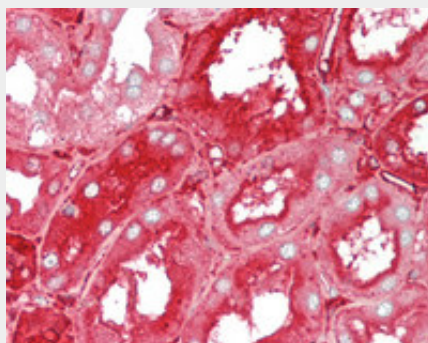
for coronary artery disease, such as in carrier of the eNOSa/b genotype and exposure to cigarette smoking. It is also present in increased levels in aortic lesions relative to native ApoA-I and increased levels are seen with increasing severity of disease

Anti-APOA1 / Apolipoprotein A 1 Antibody - Protocols

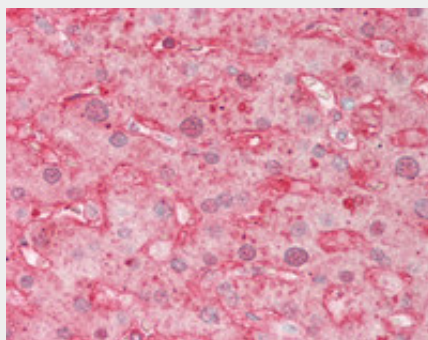
Provided below are standard protocols that you may find useful for product applications.

- [Western Blot](#)
- [Blocking Peptides](#)
- [Dot Blot](#)
- [Immunohistochemistry](#)
- [Immunofluorescence](#)
- [Immunoprecipitation](#)
- [Flow Cytometry](#)
- [Cell Culture](#)

Anti-APOA1 / Apolipoprotein A 1 Antibody - Images



Human Kidney: Formalin-Fixed, Paraffin-Embedded (FFPE)



Human Liver: Formalin-Fixed, Paraffin-Embedded (FFPE)