

**Anti-Neurofibromin / NF1 Antibody (aa1526-1575)**  
**Rabbit Anti Human Polyclonal Antibody**  
**Catalog # ALS17316**

### Specification

---

#### Anti-Neurofibromin / NF1 Antibody (aa1526-1575) - Product Information

Application	IHC-P
Primary Accession	<a href="#">P21359</a>
Predicted	Human, Mouse, Rat
Host	Rabbit
Clonality	Polyclonal
Isotype	IgG
Calculated MW	319372

#### Anti-Neurofibromin / NF1 Antibody (aa1526-1575) - Additional Information

**Gene ID** 4763

**Alias Symbol** NF1  
**Other Names**  
NF1, VRNF, Neurofibromin 1, NFNS, WSS, Neurofibromin

#### Target/Specificity

NF1 Antibody antibody detects endogenous levels of NF1.

#### Reconstitution & Storage

PBS, pH 7.4, 150 mM sodium chloride, 0.02% sodium azide, 50% glycerol Store at -20°C.

#### Precautions

Anti-Neurofibromin / NF1 Antibody (aa1526-1575) is for research use only and not for use in diagnostic or therapeutic procedures.

#### Anti-Neurofibromin / NF1 Antibody (aa1526-1575) - Protein Information

**Name** NF1

#### Function

Stimulates the GTPase activity of Ras. NF1 shows greater affinity for Ras GAP, but lower specific activity. May be a regulator of Ras activity.

#### Cellular Location

Nucleus. Nucleus, nucleolus. Cell membrane

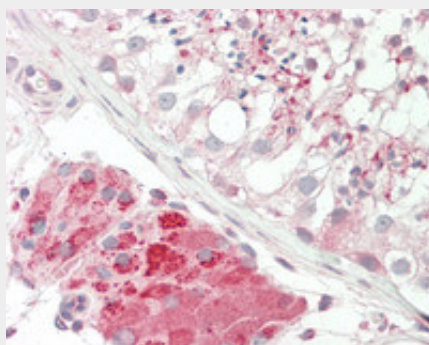
#### Tissue Location

Detected in brain, peripheral nerve, lung, colon and muscle.

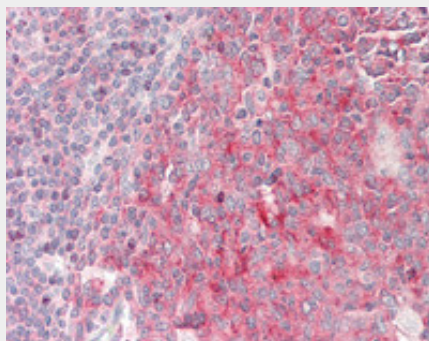
**Anti-Neurofibromin / NF1 Antibody (aa1526-1575) - Protocols**

Provided below are standard protocols that you may find useful for product applications.

- [Western Blot](#)
- [Blocking Peptides](#)
- [Dot Blot](#)
- [Immunohistochemistry](#)
- [Immunofluorescence](#)
- [Immunoprecipitation](#)
- [Flow Cytometry](#)
- [Cell Culture](#)

**Anti-Neurofibromin / NF1 Antibody (aa1526-1575) - Images**

Human Testis: Formalin-Fixed, Paraffin-Embedded (FFPE)



Human Tonsil: Formalin-Fixed, Paraffin-Embedded (FFPE)