

NCAM / CD56 Antibody (aa20-718, clone 1G4)
Mouse Monoclonal Antibody
Catalog # ALS17260

Specification

NCAM / CD56 Antibody (aa20-718, clone 1G4) - Product Information

Application	IHC-P, WB
Primary Accession	P13591
Other Accession	4684
Reactivity	Human, Mouse, Rat, Monkey, Dog
Host	Mouse
Clonality	Monoclonal
Isotype	IgG1

NCAM / CD56 Antibody (aa20-718, clone 1G4) - Additional Information

Gene ID 4684

Other Names

NCAM1, CD56, CD56 antigen, MSK39, NCAM-1, N-CAM-1, NCAM

Target/Specificity

Human NCAM / CD56

Reconstitution & Storage

PBS, pH 7.3, 1% BSA, 50% glycerol, 0.02% sodium azide. Store at -20°C. Minimize freezing and thawing.

Precautions

NCAM / CD56 Antibody (aa20-718, clone 1G4) is for research use only and not for use in diagnostic or therapeutic procedures.

NCAM / CD56 Antibody (aa20-718, clone 1G4) - Protein Information

Name NCAM1 ([HGNC:7656](#))

Synonyms NCAM

Function

This protein is a cell adhesion molecule involved in neuron- neuron adhesion, neurite fasciculation, outgrowth of neurites, etc. (Microbial infection) Acts as a receptor for Zika virus.

Cellular Location

[Isoform 1]: Cell membrane; Single-pass type I membrane protein [Isoform 3]: Cell membrane; Lipid-anchor, GPI- anchor [Isoform 5]: Secreted.

Volume

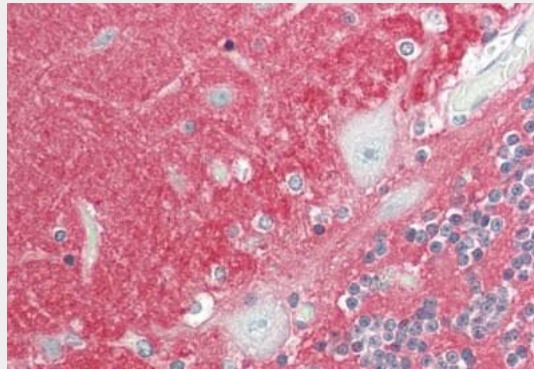
Array

NCAM / CD56 Antibody (aa20-718, clone 1G4) - Protocols

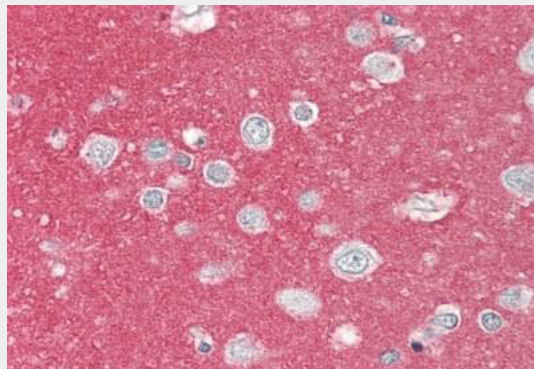
Provided below are standard protocols that you may find useful for product applications.

- [Western Blot](#)
- [Blocking Peptides](#)
- [Dot Blot](#)
- [Immunohistochemistry](#)
- [Immunofluorescence](#)
- [Immunoprecipitation](#)
- [Flow Cytometry](#)
- [Cell Culture](#)

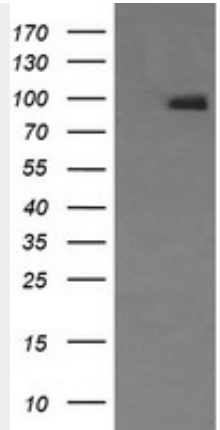
NCAM / CD56 Antibody (aa20-718, clone 1G4) - Images



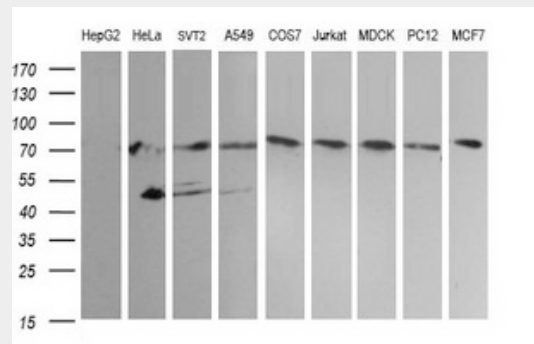
Human Brain, Cerebellum: Formalin-Fixed, Paraffin-Embedded (FFPE)



Human Brain, Cortex: Formalin-Fixed, Paraffin-Embedded (FFPE)



HEK293T cells were transfected with the pCMV6-ENTRY control (Left lane) or pCMV6-ENTRY NCAM1...



Western blot of extracts (35ug) from 9 different cell lines by using anti-NCAM1 monoclonal...

NCAM / CD56 Antibody (aa20-718, clone 1G4) - Background

This protein is a cell adhesion molecule involved in neuron-neuron adhesion, neurite fasciculation, outgrowth of neurites, etc.

NCAM / CD56 Antibody (aa20-718, clone 1G4) - References

Barton C.H., et al. *Development* 104:165-173(1988).
 Lanier L.L., et al. *J. Immunol.* 146:4421-4426(1991).
 Saito S., et al. *Lung Cancer* 10:307-318(1994).
 Ota T., et al. *Nat. Genet.* 36:40-45(2004).
 Totoki Y., et al. Submitted (MAR-2005) to the EMBL/GenBank/DDBJ databases.