

**CGB / hCG Beta Antibody (Beta 2, clone INN-hCG-22)**  
**Mouse Monoclonal Antibody**  
**Catalog # ALS17253**

**Specification**

---

**CGB / hCG Beta Antibody (Beta 2, clone INN-hCG-22) - Product Information**

Application	IHC-P
Primary Accession	<a href="#">PODN86</a>
Reactivity	Human
Host	Mouse
Clonality	Monoclonal
Isotype	IgG1
Calculated MW	17739

**CGB / hCG Beta Antibody (Beta 2, clone INN-hCG-22) - Additional Information**

**Gene ID** 1082;93659;94115

**Other Names**

CGB, CGB3, CG-beta, Choriogonadotropin beta chain, HCGB, hCG Beta

**Target/Specificity**

Shows strong reaction in RIA with hCG and b-hCG with some reactivity on hLH (12%) and b-hLH (34%). No reaction with hFSH, hTSH, a-hCG and a-hLH. Affinity constant =  $1.6 \times 10^9$  (Ka)

**Reconstitution & Storage**

0.09% sodium azide. Long term: -20°C; Short term: +4°C. Avoid repeat freeze-thaw cycles.

**Precautions**

CGB / hCG Beta Antibody (Beta 2, clone INN-hCG-22) is for research use only and not for use in diagnostic or therapeutic procedures.

**CGB / hCG Beta Antibody (Beta 2, clone INN-hCG-22) - Protein Information**

**Name** CGB3

**Synonyms** CGB

**Function**

Beta subunit of the human chorionic gonadotropin (hCG). hCG is a complex glycoprotein composed of two glycosylated subunits alpha and beta which are non-covalently associated. The alpha subunit is identical to those in the pituitary gonadotropin hormones (LH, FSH and TSH). The beta subunits are distinct in each of the hormones and confer receptor and biological specificity. Has an essential role in pregnancy and maternal adaptation. Stimulates the ovaries to synthesize the steroids that are essential for the maintenance of pregnancy.

**Cellular Location**

Secreted.

### Tissue Location

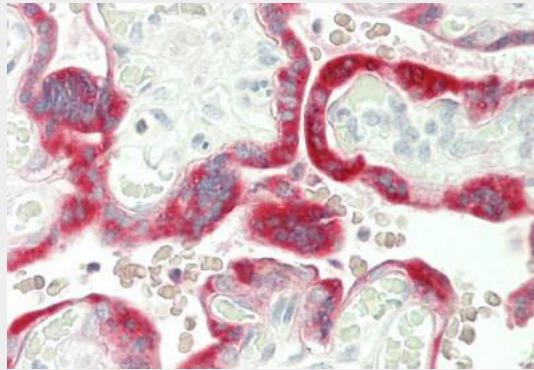
High expression in the placenta throughout pregnancy.

### CGB / hCG Beta Antibody (Beta 2, clone INN-hCG-22) - Protocols

Provided below are standard protocols that you may find useful for product applications.

- [Western Blot](#)
- [Blocking Peptides](#)
- [Dot Blot](#)
- [Immunohistochemistry](#)
- [Immunofluorescence](#)
- [Immunoprecipitation](#)
- [Flow Cytometry](#)
- [Cell Culture](#)

### CGB / hCG Beta Antibody (Beta 2, clone INN-hCG-22) - Images



Human Placenta: Formalin-Fixed, Paraffin-Embedded (FFPE)