

**APCS / Serum Amyloid P / SAP Antibody**  
**Rabbit Polyclonal Antibody**  
**Catalog # ALS17251**

**Specification**

---

**APCS / Serum Amyloid P / SAP Antibody - Product Information**

Application	IHC-P, WB
Primary Accession	<a href="#">P02743</a>
Other Accession	<a href="#">325</a>
Reactivity	Human, Mouse
Host	Rabbit
Clonality	Polyclonal
Calculated MW	25387

**APCS / Serum Amyloid P / SAP Antibody - Additional Information**

**Gene ID** 325

**Other Names**

APCS, 9.5S alpha-1-glycoprotein, Amyloid P component, serum, Pentaxin-related, PTX2, Serum Amyloid P, Serum amyloid P-component, SAP

**Target/Specificity**

Human APCS / Serum Amyloid P / SAP

**Reconstitution & Storage**

PBS, 0.1% sodium azide, 50% glycerol. Store at 4°C short term. Aliquot and store at -20°C long term. Avoid freeze-thaw cycles.

**Precautions**

APCS / Serum Amyloid P / SAP Antibody is for research use only and not for use in diagnostic or therapeutic procedures.

**APCS / Serum Amyloid P / SAP Antibody - Protein Information**

**Name** APCS

**Synonyms** PTX2

**Function**

Can interact with DNA and histones and may scavenge nuclear material released from damaged circulating cells. May also function as a calcium-dependent lectin.

**Cellular Location**

Secreted.

**Tissue Location**

Found in serum and urine.

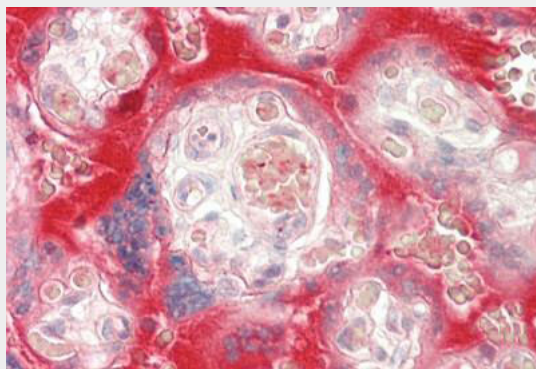
**Volume**  
50  $\mu$ l

### **APCS / Serum Amyloid P / SAP Antibody - Protocols**

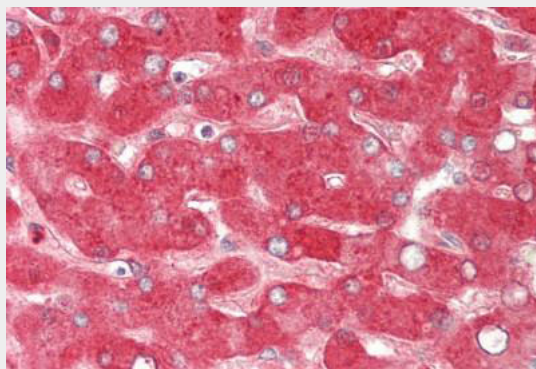
Provided below are standard protocols that you may find useful for product applications.

- [Western Blot](#)
- [Blocking Peptides](#)
- [Dot Blot](#)
- [Immunohistochemistry](#)
- [Immunofluorescence](#)
- [Immunoprecipitation](#)
- [Flow Cytometry](#)
- [Cell Culture](#)

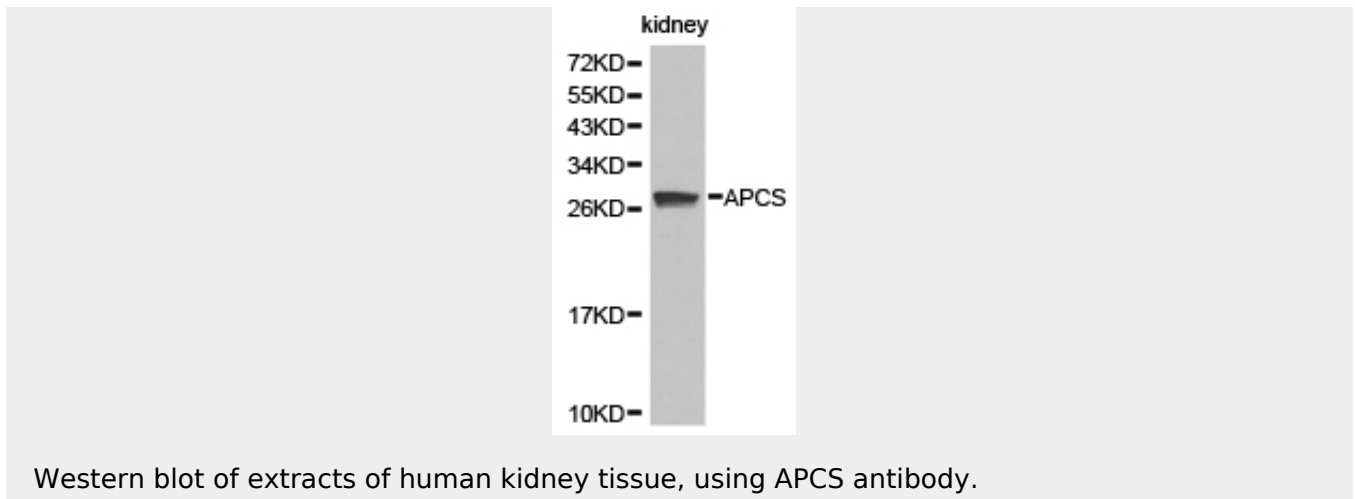
### **APCS / Serum Amyloid P / SAP Antibody - Images**



Human Placenta: Formalin-Fixed, Paraffin-Embedded (FFPE)



Human Liver: Formalin-Fixed, Paraffin-Embedded (FFPE)



Western blot of extracts of human kidney tissue, using APCS antibody.

#### **APCS / Serum Amyloid P / SAP Antibody - Background**

Can interact with DNA and histones and may scavenge nuclear material released from damaged circulating cells. May also function as a calcium-dependent lectin.

#### **APCS / Serum Amyloid P / SAP Antibody - References**

- Mantzouranis E.C., et al. *J. Biol. Chem.* 260:7752-7756(1985).
- Ohnishi S., et al. *J. Biochem.* 100:849-858(1986).
- Kalnina N., et al. Submitted (MAY-2003) to the EMBL/GenBank/DDBJ databases.
- Ebert L., et al. Submitted (MAY-2004) to the EMBL/GenBank/DDBJ databases.
- Gregory S.G., et al. *Nature* 441:315-321(2006).