

MDH / MDH2 Antibody
Rabbit Polyclonal Antibody
Catalog # ALS17249**Specification**

MDH / MDH2 Antibody - Product Information

Application	IHC-P, WB
Primary Accession	P40926
Other Accession	4191
Reactivity	Human, Mouse, Rat
Host	Rabbit
Clonality	Polyclonal
Isotype	IgG
Calculated MW	35503

MDH / MDH2 Antibody - Additional Information**Gene ID** 4191**Other Names**

MDH2, MDH, M-MDH, MGC:3559, MOR1

Target/Specificity

Human MDH / MDH2

Reconstitution & Storage

PBS, pH 7.3, 0.02% sodium azide, 50% glycerol. Long term: -80°C; Short term: -20°C. Avoid freeze-thaw cycles.

Precautions

MDH / MDH2 Antibody is for research use only and not for use in diagnostic or therapeutic procedures.

MDH / MDH2 Antibody - Protein Information**Name** MDH2**Cellular Location**

Mitochondrion matrix {ECO:0000250|UniProtKB:P04636}

Volume

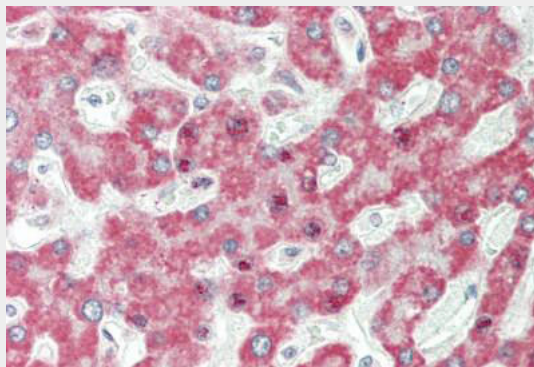
50 µl

MDH / MDH2 Antibody - Protocols

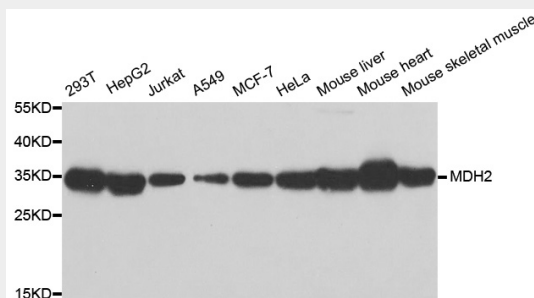
Provided below are standard protocols that you may find useful for product applications.

- [Western Blot](#)
- [Blocking Peptides](#)
- [Dot Blot](#)
- [Immunohistochemistry](#)
- [Immunofluorescence](#)
- [Immunoprecipitation](#)
- [Flow Cytometry](#)
- [Cell Culture](#)

MDH / MDH2 Antibody - Images



Human Liver: Formalin-Fixed, Paraffin-Embedded (FFPE)



Western blot analysis of extracts of various cell lines, using MDH2 antibody.

MDH / MDH2 Antibody - References

- Hu G., et al. Submitted (FEB-1998) to the EMBL/GenBank/DDBJ databases.
Ota T., et al. Nat. Genet. 36:40-45(2004).
Hillier L.W., et al. Nature 424:157-164(2003).
Mural R.J., et al. Submitted (JUL-2005) to the EMBL/GenBank/DDBJ databases.
Rush J., et al. Nat. Biotechnol. 23:94-101(2005).