

ZFH3 / ATBF1 Antibody
Rabbit Polyclonal Antibody
Catalog # ALS17231**Specification**

ZFH3 / ATBF1 Antibody - Product Information

Application	IHC, IHC-P, ICC, WB, IP
Primary Accession	Q15911
Other Accession	463
Reactivity	Human, Mouse, Rat
Host	Rabbit
Clonality	Polyclonal
Isotype	IgG
Calculated MW	404419

ZFH3 / ATBF1 Antibody - Additional Information**Gene ID** 463**Other Names**

ZFH3, AT motif-binding factor, Zinc finger homeobox 3, ZNF927, ZFH-3, Zinc finger homeobox protein 3, AT motif-binding factor 1, ATBF1, ATBT

Target/Specificity

human ZFH3 / ATBF1

Reconstitution & Storage

PBS, pH 7.2, 50% glycerol. Store at -20°C.

Precautions

ZFH3 / ATBF1 Antibody is for research use only and not for use in diagnostic or therapeutic procedures.

ZFH3 / ATBF1 Antibody - Protein Information**Name** ZFH3**Synonyms** ATBF1, C16orf47 {ECO:0000312|HGNC:HGNC:7**Function**

Transcriptional regulator which can act as an activator or a repressor. Inhibits the enhancer element of the AFP gene by binding to its AT-rich core sequence. In concert with SMAD-dependent TGF-beta signaling can repress the transcription of AFP via its interaction with SMAD2/3 (PubMed:25105025). Regulates the circadian locomotor rhythms via transcriptional activation of neuropeptidergic genes which are essential for intercellular synchrony and rhythm amplitude in the suprachiasmatic nucleus (SCN) of the brain (By similarity). Regulator of myoblasts differentiation through the binding to the AT-rich sequence of MYF6 promoter and promoter repression (PubMed:11312261).
Down-regulates the MUC5AC promoter in gastric cancer (PubMed:17330845). In
association with RUNX3, up-regulates CDKN1A promoter activity following TGF-beta stimulation
(PubMed:20599712).
Inhibits estrogen receptor (ESR1) function by selectively competing with coactivator NCOA3 for
binding to ESR1 in ESR1-positive breast cancer cells (PubMed:20720010).

Cellular Location

Nucleus. Cytoplasm Note=Translocates from the cytoplasm to the nucleus following TGF-beta stimulation. Expressed in nuclear body (NB)-like dots in the nucleus some of which overlap or closely associate with PML body

Tissue Location

Not found in normal gastric mucosa but found in gastric carcinoma cells (at protein level).
Expression is higher in ER- positive breast tumors than ER-negative breast tumors (at protein level).

Volume

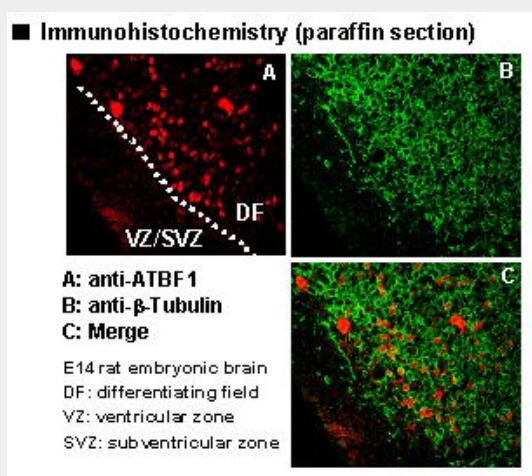
50 µl

ZFHX3 / ATBF1 Antibody - Protocols

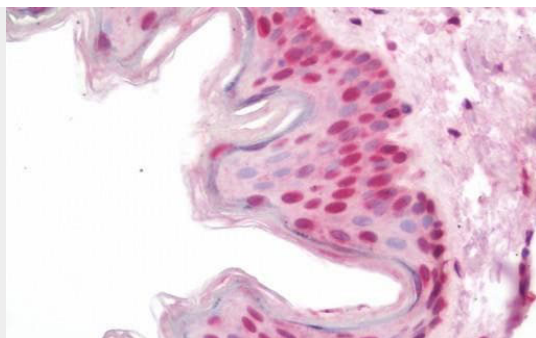
Provided below are standard protocols that you may find useful for product applications.

- [Western Blot](#)
- [Blocking Peptides](#)
- [Dot Blot](#)
- [Immunohistochemistry](#)
- [Immunofluorescence](#)
- [Immunoprecipitation](#)
- [Flow Cytometry](#)
- [Cell Culture](#)

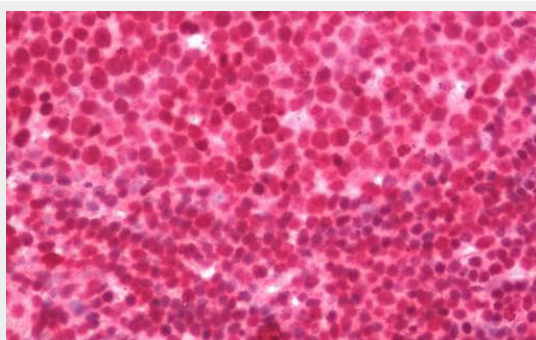
ZFHX3 / ATBF1 Antibody - Images



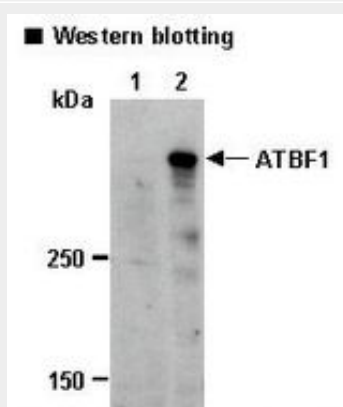
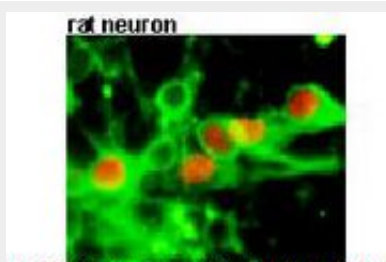
A: anti-ATBF1;B:anti-β-Tubulin;C:Merge



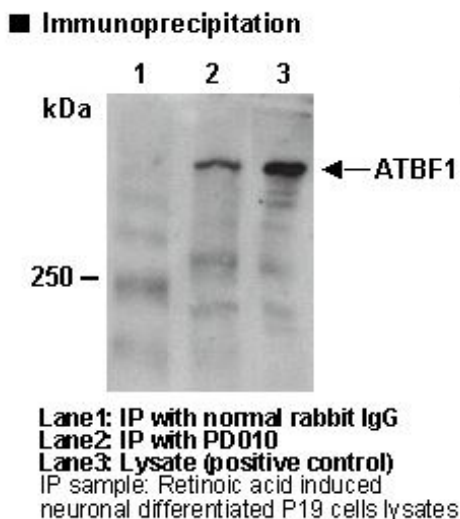
Human Skin: Formalin-Fixed, Paraffin-Embedded (FFPE)



Human Tonsil: Formalin-Fixed, Paraffin-Embedded (FFPE)



western blotting



ip sample :retinoic acid induced neuronal differentiated p19 cells lysates

ZFH3 / ATBF1 Antibody - Background

Transcriptional repressor. It inhibits the enhancer element of the AFP gene by binding to its AT-rich core sequence. Regulator of myoblasts differentiation through the binding to the AT-rich sequence of MYF6 promoter and promoter repression. Down- regulates the MUC5AC promoter in gastric cancer.

ZFH3 / ATBF1 Antibody - References

Miura Y.,et al.J. Biol. Chem. 270:26840-26848(1995).
Morinaga T.,et al.Mol. Cell. Biol. 11:6041-6049(1991).
Martin J.,et al.Nature 432:988-994(2004).
Mural R.J.,et al.Submitted (SEP-2005) to the EMBL/GenBank/DDBJ databases.
Loftus B.J.,et al.Genomics 60:295-308(1999).