

GGA1 Antibody (clone 3F11)
Mouse Monoclonal Antibody
Catalog # ALS17219**Specification**

GGA1 Antibody (clone 3F11) - Product Information

| | |
|-------------------|------------------------|
| Application | IHC-P, WB, E |
| Primary Accession | O9UJY5 |
| Other Accession | 26088 |
| Reactivity | Human |
| Host | Mouse |
| Clonality | Monoclonal |
| Isotype | IgG |
| Calculated MW | 70384 |

GGA1 Antibody (clone 3F11) - Additional Information**Gene ID** 26088**Other Names**
GGA1**Target/Specificity**
Human GGA1**Reconstitution & Storage**

PBS, pH 7.4. Store at -20°C or lower. Aliquot to avoid repeated freezing and thawing.

Precautions

GGA1 Antibody (clone 3F11) is for research use only and not for use in diagnostic or therapeutic procedures.

GGA1 Antibody (clone 3F11) - Protein Information**Name** GGA1**Function**

Plays a role in protein sorting and trafficking between the trans-Golgi network (TGN) and endosomes. Mediates the ARF-dependent recruitment of clathrin to the TGN and binds ubiquitinated proteins and membrane cargo molecules with a cytosolic acidic cluster-dileucine (DXXLL) motif (PubMed: [11301005](http://www.uniprot.org/citations/11301005), PubMed: [15886016](http://www.uniprot.org/citations/15886016)). Mediates export of the GPCR receptor ADRA2B to the cell surface (PubMed: [27901063](http://www.uniprot.org/citations/27901063)). Required for targeting PKD1:PKD2 complex from the trans-Golgi network to the cilium membrane (By similarity). Regulates retrograde transport of proteins such as phosphorylated form of BACE1 from endosomes to the trans-Golgi network (PubMed: [15615712](http://www.uniprot.org/citations/15615712), PubMed: [15615712](http://www.uniprot.org/citations/15615712)).

href="http://www.uniprot.org/citations/15886016" target="_blank">15886016).

Cellular Location

Golgi apparatus, trans-Golgi network membrane; Peripheral membrane protein. Endosome membrane; Peripheral membrane protein Early endosome membrane; Peripheral membrane protein

Tissue Location

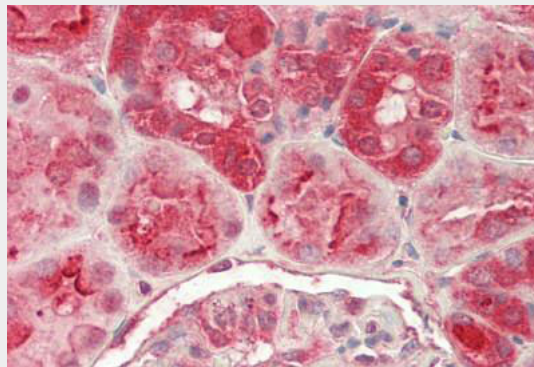
Ubiquitously expressed.

GGA1 Antibody (clone 3F11) - Protocols

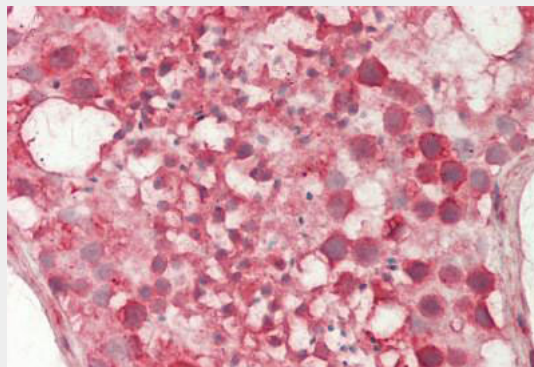
Provided below are standard protocols that you may find useful for product applications.

- [Western Blot](#)
- [Blocking Peptides](#)
- [Dot Blot](#)
- [Immunohistochemistry](#)
- [Immunofluorescence](#)
- [Immunoprecipitation](#)
- [Flow Cytometry](#)
- [Cell Culture](#)

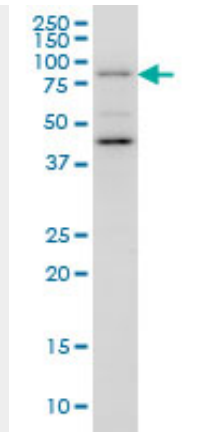
GGA1 Antibody (clone 3F11) - Images



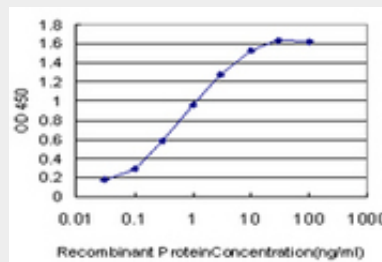
Human Kidney: Formalin-Fixed, Paraffin-Embedded (FFPE)



Human Testis: Formalin-Fixed, Paraffin-Embedded (FFPE)



GGA1 monoclonal antibody (M01), clone 3F11 Western blot of GGA1 expression in K-562.



Detection limit for recombinant GST tagged GGA1 is approximately 0.03 ng/ml as a capture antibody.

GGA1 Antibody (clone 3F11) - Background

Plays a role in protein sorting and trafficking between the trans-Golgi network (TGN) and endosomes. Mediates the ARF- dependent recruitment of clathrin to the TGN and binds ubiquitinated proteins and membrane cargo molecules with a cytosolic acidic cluster-dileucine (AC-LL) motif.

GGA1 Antibody (clone 3F11) - References

- Boman A.L., et al. Mol. Biol. Cell 11:1241-1255(2000).
- Dell'Angelica E.C., et al. J. Cell Biol. 149:81-94(2000).
- Hirst J., et al. J. Cell Biol. 149:67-80(2000).
- Collins J.E., et al. Genome Biol. 5:R84.1-R84.11(2004).
- Ota T., et al. Nat. Genet. 36:40-45(2004).