

**SLC9A1 / NHE1 Antibody**  
**Rabbit Polyclonal Antibody**  
**Catalog # ALS17210****Specification**

---

**SLC9A1 / NHE1 Antibody - Product Information**

Application	IHC-P, ICC, WB, FC
Primary Accession	<a href="#">P19634</a>
Other Accession	<a href="#">6548</a>
Reactivity	Human
Host	Rabbit
Clonality	Polyclonal
Isotype	IgG
Calculated MW	90763

**SLC9A1 / NHE1 Antibody - Additional Information****Gene ID** 6548**Other Names**SLC9A1, Hydrogen exchanger 1, Na<sup>+</sup>/H<sup>+</sup> antiporter, NHE-1, NHE subtype 1, Na(+)/H(+) exchanger 1, NHE1, APNH, APNH1, Na<sup>+</sup>/H<sup>+</sup> exchanger, Na-Li countertransporter**Target/Specificity**

Human SLC9A1 / NHE-1

**Reconstitution & Storage**

PBS, pH 7.2, 50% glycerol. Store at -20°C.

**Precautions**

SLC9A1 / NHE1 Antibody is for research use only and not for use in diagnostic or therapeutic procedures.

**SLC9A1 / NHE1 Antibody - Protein Information****Name** SLC9A1 ([HGNC:11071](#))**Function**

Electroneutral Na<sup>+</sup>/H<sup>+</sup> antiporter that extrudes Na<sup>+</sup> in exchange for external protons driven by the inward sodium ion chemical gradient, protecting cells from acidification that occurs from metabolism (PubMed: [11350981](http://www.uniprot.org/citations/11350981) target="\_blank">11350981</a>, PubMed: [11532004](http://www.uniprot.org/citations/11532004) target="\_blank">11532004</a>, PubMed: [14680478](http://www.uniprot.org/citations/14680478) target="\_blank">14680478</a>, PubMed: [15035633](http://www.uniprot.org/citations/15035633) target="\_blank">15035633</a>, PubMed: [15677483](http://www.uniprot.org/citations/15677483) target="\_blank">15677483</a>, PubMed: [17073455](http://www.uniprot.org/citations/17073455) target="\_blank">17073455</a>, PubMed: [17493937](http://www.uniprot.org/citations/17493937) target="\_blank">17493937</a>, PubMed: [22020933](http://www.uniprot.org/citations/22020933) target="\_blank">22020933</a>)

target="\_blank">22020933</a>, PubMed:<a href="http://www.uniprot.org/citations/27650500" target="\_blank">27650500</a>, PubMed:<a href="http://www.uniprot.org/citations/32130622" target="\_blank">32130622</a>, PubMed:<a href="http://www.uniprot.org/citations/7110335" target="\_blank">7110335</a>, PubMed:<a href="http://www.uniprot.org/citations/7603840" target="\_blank">7603840</a>). Exchanges intracellular H(+) ions for extracellular Na(+) in 1:1 stoichiometry (By similarity). Plays a key role in maintaining intracellular pH neutral and cell volume, and thus is important for cell growth, proliferation, migration and survival (PubMed:<a href="http://www.uniprot.org/citations/12947095" target="\_blank">12947095</a>, PubMed:<a href="http://www.uniprot.org/citations/15096511" target="\_blank">15096511</a>, PubMed:<a href="http://www.uniprot.org/citations/22020933" target="\_blank">22020933</a>, PubMed:<a href="http://www.uniprot.org/citations/8901634" target="\_blank">8901634</a>). In addition, can transport lithium Li(+) and functions also as a Na(+)/Li(+) antiporter (PubMed:<a href="http://www.uniprot.org/citations/7603840" target="\_blank">7603840</a>). SLC9A1 also functions in membrane anchoring and organization of scaffolding complexes that coordinate signaling inputs (PubMed:<a href="http://www.uniprot.org/citations/15096511" target="\_blank">15096511</a>).

### Cellular Location

Cell membrane; Multi-pass membrane protein. Basolateral cell membrane {ECO:0000250|UniProtKB:P48762}; Multi-pass membrane protein. Note=Localized basolaterally in every epithelial cell, except in the choroid plexus where SLC9A1 is expressed luminally.

### Tissue Location

Kidney and intestine.

### Volume

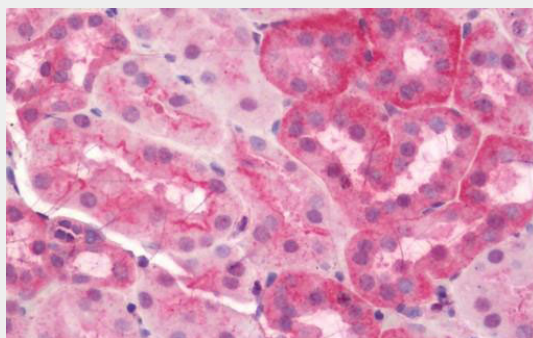
250 µl

## SLC9A1 / NHE1 Antibody - Protocols

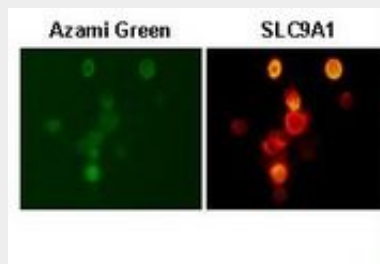
Provided below are standard protocols that you may find useful for product applications.

- [Western Blot](#)
- [Blocking Peptides](#)
- [Dot Blot](#)
- [Immunohistochemistry](#)
- [Immunofluorescence](#)
- [Immunoprecipitation](#)
- [Flow Cytometry](#)
- [Cell Culture](#)

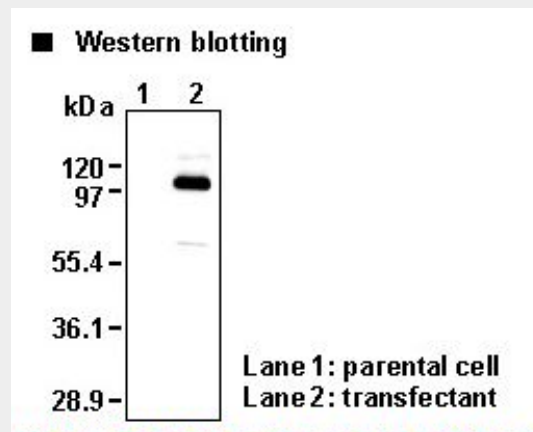
## SLC9A1 / NHE1 Antibody - Images



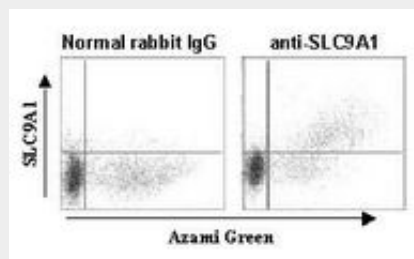
Human Kidney: Formalin-Fixed, Paraffin-Embedded (FFPE)



ICC detection of SLC9A1 (Right) in 293T transiently expressing SLC9A1 and Azami-green with the...



Western blot analysis of SLC9A1 expression in Myc-tagged SLC9A1 transfected 293T and parental...



Flow cytometric analysis of intracellular SLC9A1 expression on 293T transiently expressing SLC9A1...

### SLC9A1 / NHE1 Antibody - Background

Involved in pH regulation to eliminate acids generated by active metabolism or to counter adverse environmental conditions. Major proton extruding system driven by the inward sodium ion chemical gradient. Plays an important role in signal transduction.

### SLC9A1 / NHE1 Antibody - References

- Sardet C., et al. Cell 56:271-280(1989).
- Sardet C., et al. Science 247:723-726(1990).
- Tse C.-M., et al. EMBO J. 10:1957-1967(1991).
- Fliegel L., et al. Mol. Cell. Biochem. 125:137-143(1993).
- Garden O.A., et al. Cancer Genet. Cytogenet. 120:37-43(2000).