

**CAPN2 / Calpain 2 / M-Calpain Antibody (clone 1F4)**  
**Mouse Monoclonal Antibody**  
**Catalog # ALS17205****Specification**

---

**CAPN2 / Calpain 2 / M-Calpain Antibody (clone 1F4) - Product Information**

Application	IHC-P, WB
Primary Accession	<a href="#">P17655</a>
Other Accession	<a href="#">824</a>
Reactivity	Human, Mouse, Rat, Monkey
Host	Mouse
Clonality	Monoclonal
Isotype	IgG2a
Calculated MW	79995

**CAPN2 / Calpain 2 / M-Calpain Antibody (clone 1F4) - Additional Information****Gene ID** 824**Other Names**

CAPN2, Calpain 2, large subunit, Calpain ii, Calpain, large polypeptide L2, Calpain-2 catalytic subunit, Calpain 2, Calpain large polypeptide L2, Calpain-2 large subunit, CANP 2, Calpain M-type, CANP2, CANPL2, CANPml, M-type calpain, M-calpain, MCANP ...

**Target/Specificity**

Human CAPN2 / Calpain 2 / M-Calpain

**Reconstitution & Storage**

PBS, pH 7.3, 1% BSA, 50% glycerol, 0.02% sodium azide. Store at -20°C. Minimize freezing and thawing.

**Precautions**

CAPN2 / Calpain 2 / M-Calpain Antibody (clone 1F4) is for research use only and not for use in diagnostic or therapeutic procedures.

**CAPN2 / Calpain 2 / M-Calpain Antibody (clone 1F4) - Protein Information****Name** CAPN2**Synonyms** CANPL2**Function**

Calcium-regulated non-lysosomal thiol-protease which catalyzes limited proteolysis of substrates involved in cytoskeletal remodeling and signal transduction. Proteolytically cleaves MYOC at 'Arg-226' (PubMed: <a href="http://www.uniprot.org/citations/17650508" target="\_blank">17650508</a>). Proteolytically cleaves CPEB3 following neuronal stimulation which abolishes CPEB3 translational repressor activity, leading to translation of CPEB3 target mRNAs (By similarity).

**Cellular Location**

Cytoplasm. Cell membrane. Note=Translocates to the plasma membrane upon Ca(2+) binding

**Tissue Location**

Ubiquitous.

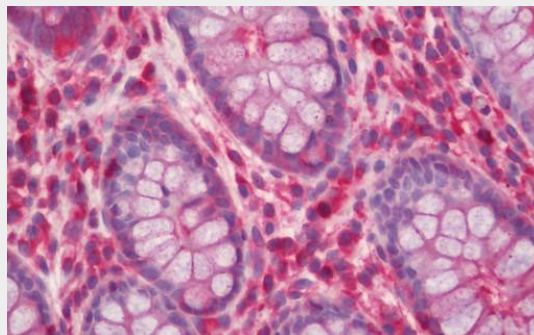
**Volume**

50  $\mu$ l

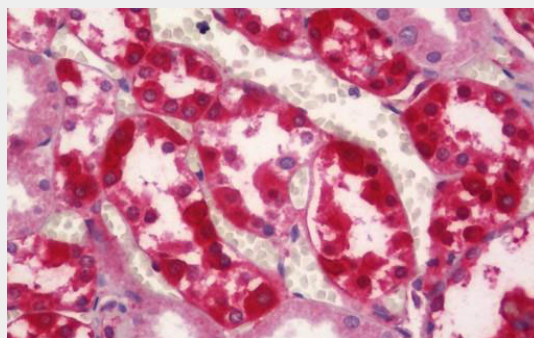
**CAPN2 / Calpain 2 / M-Calpain Antibody (clone 1F4) - Protocols**

Provided below are standard protocols that you may find useful for product applications.

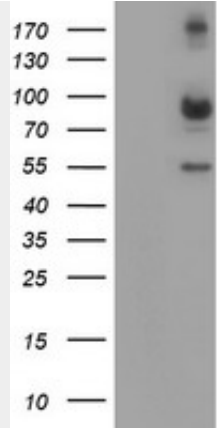
- [Western Blot](#)
- [Blocking Peptides](#)
- [Dot Blot](#)
- [Immunohistochemistry](#)
- [Immunofluorescence](#)
- [Immunoprecipitation](#)
- [Flow Cytometry](#)
- [Cell Culture](#)

**CAPN2 / Calpain 2 / M-Calpain Antibody (clone 1F4) - Images**

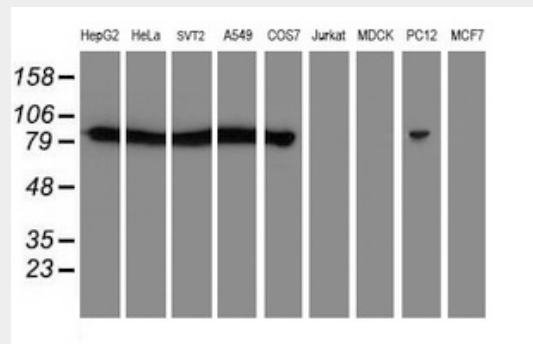
Human Colon: Formalin-Fixed, Paraffin-Embedded (FFPE)



Human Kidney: Formalin-Fixed, Paraffin-Embedded (FFPE)



HEK293T cells were transfected with the pCMV6-ENTRY control (Left lane) or pCMV6-ENTRY CAPN2...



Western blot of extracts (35ug) from 9 different cell lines by using anti-CAPN2 monoclonal...

#### **CAPN2 / Calpain 2 / M-Calpain Antibody (clone 1F4) - Background**

Calcium-regulated non-lysosomal thiol-protease which catalyze limited proteolysis of substrates involved in cytoskeletal remodeling and signal transduction. Proteolytically cleaves MYOC at 'Arg-226' (PubMed:17650508).

#### **CAPN2 / Calpain 2 / M-Calpain Antibody (clone 1F4) - References**

- Imajoh S.,et al.Biochemistry 27:8122-8128(1988).
- Ye Z.,et al.Biochem. Biophys. Res. Commun. 275:223-227(2000).
- Ota T.,et al.Nat. Genet. 36:40-45(2004).
- Gregory S.G.,et al.Nature 441:315-321(2006).
- Hata A.,et al.J. Biol. Chem. 264:6404-6411(1989).