

CS / Citrate Synthase Antibody (Internal)
Rabbit Polyclonal Antibody
Catalog # ALS17198

Specification

CS / Citrate Synthase Antibody (Internal) - Product Information

Application	IHC-P, WB
Primary Accession	075390
Other Accession	1431
Reactivity	Human, Mouse, Chicken
Host	Rabbit
Clonality	Polyclonal
Isotype	IgG
Calculated MW	51712

CS / Citrate Synthase Antibody (Internal) - Additional Information

Gene ID 1431

Other Names

CS, Citrate synthase, Citrate synthetase

Target/Specificity

Human CS / Citrate Synthase

Reconstitution & Storage

PBS, 20% glycerol (pH 7), 0.025% proclin. Keep as concentrated solution. Aliquot and store at -20°C or below. Avoid multiple freeze-thaw cycles.

Precautions

CS / Citrate Synthase Antibody (Internal) is for research use only and not for use in diagnostic or therapeutic procedures.

CS / Citrate Synthase Antibody (Internal) - Protein Information

Name CS

Cellular Location

Mitochondrion matrix.

Volume

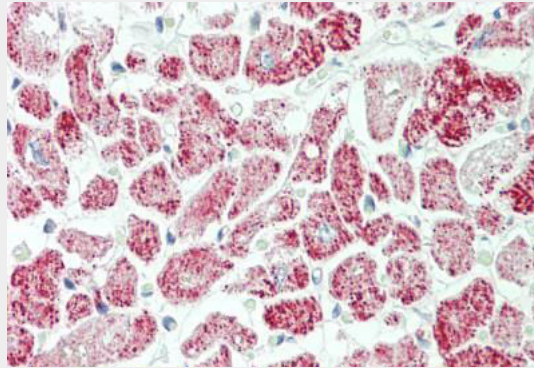
50 µl

CS / Citrate Synthase Antibody (Internal) - Protocols

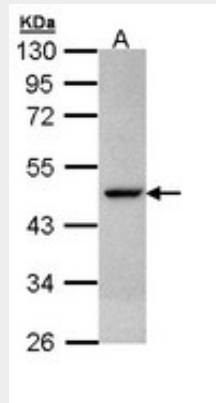
Provided below are standard protocols that you may find useful for product applications.

- [Western Blot](#)
- [Blocking Peptides](#)
- [Dot Blot](#)
- [Immunohistochemistry](#)
- [Immunofluorescence](#)
- [Immunoprecipitation](#)
- [Flow Cytometry](#)
- [Cell Culture](#)

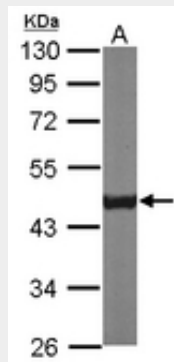
CS / Citrate Synthase Antibody (Internal) - Images



Human Heart: Formalin-Fixed, Paraffin-Embedded (FFPE)



Sample (30 ug of whole cell lysate).



Sample (50 ug of whole cell lysate).

CS / Citrate Synthase Antibody (Internal) - References

Goldenthal M.J., et al. Genome 41:733-738(1998).

Liu Q.,et al.Shi Yan Sheng Wu Xue Bao 33:207-214(2000).

Ota T.,et al.Nat. Genet. 36:40-45(2004).

Bechtel S.,et al.BMC Genomics 8:399-399(2007).

Kalnine N.,et al.Submitted (MAY-2003) to the EMBL/GenBank/DDBJ databases.