

RAB27B Antibody (C-Terminus)
Goat Polyclonal Antibody
Catalog # ALS17188**Specification**

RAB27B Antibody (C-Terminus) - Product Information

Application	IHC-P, WB
Primary Accession	O00194
Other Accession	5874
Reactivity	Human, Mouse, Rat, Monkey, Dog
Host	Goat
Clonality	Polyclonal
Isotype	IgG
Calculated MW	24608

RAB27B Antibody (C-Terminus) - Additional Information**Gene ID** 5874**Other Names**

RAB27B, C25KG, Ras-related protein Rab-27B

Target/Specificity

Detects Rab27b by Western blot in the following human, rat and mouse whole cell lysates and transfected cells with GFP-Rab27b. This antibody is specific for Rab27b. It does not recognise Rab27a protein.

Reconstitution & Storage

PBS, 20% glycerol, 0.05% sodium azide. Store at 4°C short term. Aliquot and store at -20°C long term. Avoid freeze-thaw cycles.

Precautions

RAB27B Antibody (C-Terminus) is for research use only and not for use in diagnostic or therapeutic procedures.

RAB27B Antibody (C-Terminus) - Protein Information**Name** RAB27B**Function**

Small GTPase which cycles between active GTP-bound and inactive GDP-bound states. In its active state, binds to a variety of effector proteins to regulate homeostasis of late endocytic pathway, including endosomal positioning, maturation and secretion (PubMed: [30771381](http://www.uniprot.org/citations/30771381)). Plays a role in NTRK2/TRKB axonal anterograde transport by facilitating the association of NTRK2/TRKB with KLC1 (PubMed: [21775604](http://www.uniprot.org/citations/21775604)). May be involved in targeting uroplakins to urothelial apical membranes (By similarity).

Cellular Location

Membrane; Lipid-anchor. Late endosome

Tissue Location

Expressed primarily in testis.

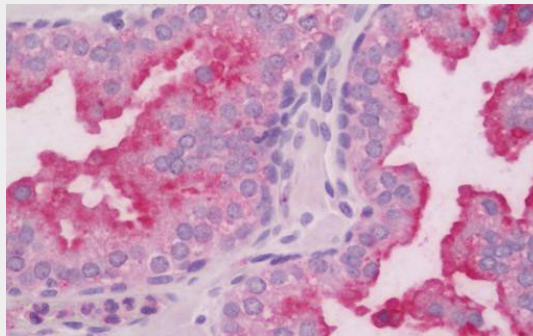
Volume

100 μ l

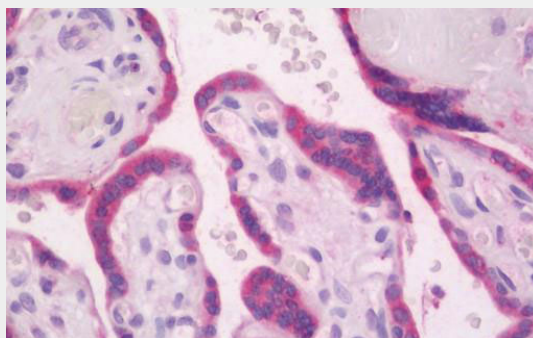
RAB27B Antibody (C-Terminus) - Protocols

Provided below are standard protocols that you may find useful for product applications.

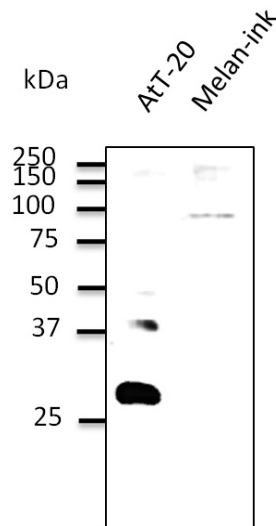
- [Western Blot](#)
- [Blocking Peptides](#)
- [Dot Blot](#)
- [Immunohistochemistry](#)
- [Immunofluorescence](#)
- [Immunoprecipitation](#)
- [Flow Cytometry](#)
- [Cell Culture](#)

RAB27B Antibody (C-Terminus) - Images

Human Prostate: Formalin-Fixed, Paraffin-Embedded (FFPE)



Human Placenta: Formalin-Fixed, Paraffin-Embedded (FFPE)



Western blot.

RAB27B Antibody (C-Terminus) - Background

May be involved in targeting uroplakins to urothelial apical membranes.

RAB27B Antibody (C-Terminus) - References

- Chen D.,et al.Biochem. Mol. Med. 60:27-37(1997).
- Chen D.,et al.Submitted (JUN-1999) to the EMBL/GenBank/DDBJ databases.
- Ramalho J.S.,et al.BMC Genet. 2:2-2(2001).
- Puhl H.L. III,et al.Submitted (APR-2002) to the EMBL/GenBank/DDBJ databases.
- Ota T.,et al.Nat. Genet. 36:40-45(2004).