

KRT5 / CK5 / Cytokeratin 5 Antibody (aa316-590, clone 2C2B4)
Mouse Monoclonal Antibody
Catalog # ALS17138**Specification**

KRT5 / CK5 / Cytokeratin 5 Antibody (aa316-590, clone 2C2B4) - Product Information

Application	IHC-P, WB, E
Primary Accession	P13647
Other Accession	3852
Reactivity	Human
Host	Mouse
Clonality	Monoclonal
Isotype	IgG1
Calculated MW	62378

KRT5 / CK5 / Cytokeratin 5 Antibody (aa316-590, clone 2C2B4) - Additional Information**Gene ID** 3852**Other Names**

KRT5, 58 kd cytokeratin, 58 kDa cytokeratin, CK5, CK-5, Cytokeratin-5, DDD, EBS2, Keratin 5, KRT5A, Type-II keratin Kb5, Cytokeratin 5, K5, Keratin-5

Target/Specificity

Human KRT5 / CK5 / Cytokeratin 5

Reconstitution & Storage

PBS, 0.05% sodium azide, 0.05% protein stabilizer. Short term +4°C; Long term -20°C

Precautions

KRT5 / CK5 / Cytokeratin 5 Antibody (aa316-590, clone 2C2B4) is for research use only and not for use in diagnostic or therapeutic procedures.

KRT5 / CK5 / Cytokeratin 5 Antibody (aa316-590, clone 2C2B4) - Protein Information**Name** KRT5**Function**

Required for the formation of keratin intermediate filaments in the basal epidermis and maintenance of the skin barrier in response to mechanical stress (By similarity). Regulates the recruitment of Langerhans cells to the epidermis, potentially by modulation of the abundance of macrophage chemotactic cytokines, macrophage inflammatory cytokines and CTNND1 localization in keratinocytes (By similarity).

Cellular Location

Cytoplasm.

Tissue Location

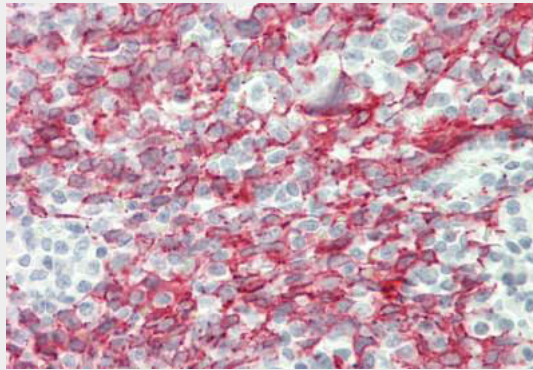
Expressed in corneal epithelium (at protein level) (PubMed:26758872). Expressed in keratinocytes (at protein level) (PubMed:20128788, PubMed:31302245).

KRT5 / CK5 / Cytokeratin 5 Antibody (aa316-590, clone 2C2B4) - Protocols

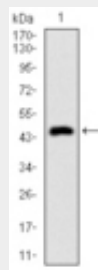
Provided below are standard protocols that you may find useful for product applications.

- [Western Blot](#)
- [Blocking Peptides](#)
- [Dot Blot](#)
- [Immunohistochemistry](#)
- [Immunofluorescence](#)
- [Immunoprecipitation](#)
- [Flow Cytometry](#)
- [Cell Culture](#)

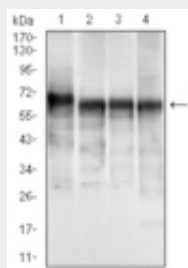
KRT5 / CK5 / Cytokeratin 5 Antibody (aa316-590, clone 2C2B4) - Images



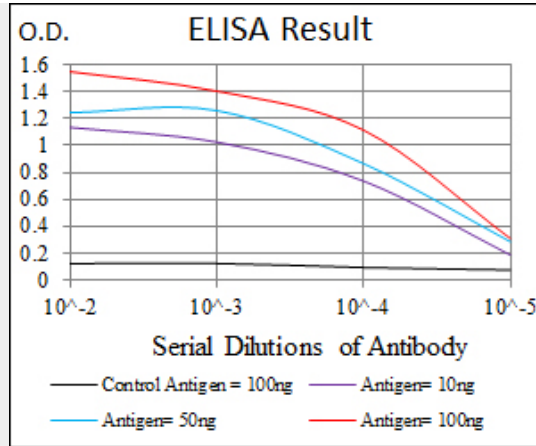
Human Tonsil: Formalin-Fixed, Paraffin-Embedded (FFPE)



Western blot using CK5 monoclonal antibody against human CK5 recombinant protein.



Western blot using CK5 mouse monoclonal antibody against A431 (1), MCF-7 (2), HeLa (3) and HepG2...



Red: Control Antigen (100ng); Purple: Antigen (10ng); Green: Antigen (50ng); Blue: Antigen (100ng);

KRT5 / CK5 / Cytokeratin 5 Antibody (aa316-590, clone 2C2B4) - References

Eckert R.L., et al. DNA 7:337-345(1988).
 Lersch R., et al. Mol. Cell. Biol. 9:3685-3697(1989).
 Whittock N.V., et al. Biochem. Biophys. Res. Commun. 274:149-152(2000).
 Lersch R., et al. Mol. Cell. Biol. 8:486-493(1988).
 Xu Z., et al. Clin. Exp. Dermatol. 29:74-76(2004).