

**DNAJC13 Antibody (C-Terminus)**  
**Rabbit Polyclonal Antibody**  
**Catalog # ALS17106****Specification**

---

**DNAJC13 Antibody (C-Terminus) - Product Information**

Application	IHC
Primary Accession	<a href="#">O75165</a>
Other Accession	<a href="#">23317</a>
Reactivity	Human, Mouse
Host	Rabbit
Clonality	Polyclonal
Calculated MW	254415

**DNAJC13 Antibody (C-Terminus) - Additional Information****Gene ID** 23317**Other Names**

DNAJC13, KIAA0678, RME8, RME-8

**Target/Specificity**

DNAJC13 antibody is human and mouse reactive. At least two isoforms of DNAJC13 are known to exist; this antibody will detect both isoforms. DNAJC13 antibody is predicted to not cross-react with other DNAJC family members.

**Reconstitution & Storage**

PBS, 0.02% sodium azide. Long term: -20°C; Short term: +4°C. Avoid repeat freeze-thaw cycles.

**Precautions**

DNAJC13 Antibody (C-Terminus) is for research use only and not for use in diagnostic or therapeutic procedures.

**DNAJC13 Antibody (C-Terminus) - Protein Information****Name** DNAJC13**Synonyms** KIAA0678, RME8**Function**

Involved in membrane trafficking through early endosomes, such as the early endosome to recycling endosome transport implicated in the recycling of transferrin and the early endosome to late endosome transport implicated in degradation of EGF and EGFR (PubMed: [18256511](http://www.uniprot.org/citations/18256511), PubMed: [18307993](http://www.uniprot.org/citations/18307993)). Involved in the regulation of endosomal membrane tubulation and regulates the dynamics of SNX1 on the endosomal membrane; via association with WASHC2 may link the WASH complex to the retromer SNX-BAR subcomplex (PubMed: [24643499](http://www.uniprot.org/citations/24643499))

target="\_blank">24643499</a>).

#### Cellular Location

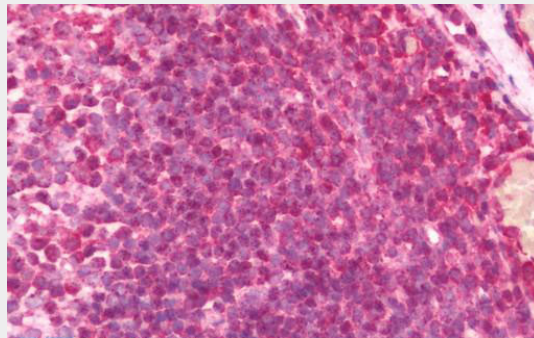
Early endosome. Early endosome membrane; Peripheral membrane protein. Endosome membrane

#### DNAJC13 Antibody (C-Terminus) - Protocols

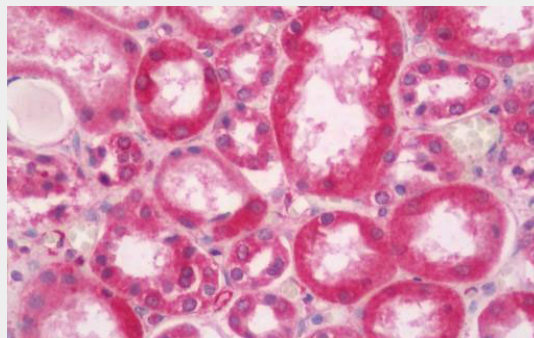
Provided below are standard protocols that you may find useful for product applications.

- [Western Blot](#)
- [Blocking Peptides](#)
- [Dot Blot](#)
- [Immunohistochemistry](#)
- [Immunofluorescence](#)
- [Immunoprecipitation](#)
- [Flow Cytometry](#)
- [Cell Culture](#)

#### DNAJC13 Antibody (C-Terminus) - Images



Human Tonsil: Formalin-Fixed, Paraffin-Embedded (FFPE)



Human Kidney: Formalin-Fixed, Paraffin-Embedded (FFPE)

#### DNAJC13 Antibody (C-Terminus) - Background

Involved in membrane trafficking through early endosomes, such as the early endosome to recycling endosome transport implicated in the recycling of transferrin and the early endosome to late endosome transport implicated in degradation of EGF and EGFR (PubMed:18256511, PubMed:18307993). Involved in the regulation of endosomal membrane tubulation and regulates the dynamics of SNX1 on the endosomal membrane; via association with FAM21 may link the WASH complex to the retromer SNX-BAR subcomplex (PubMed:24643499).

**DNAJC13 Antibody (C-Terminus) - References**

Girard M., et al. J. Biol. Chem. 280:40135-40143(2005).

Ishikawa K., et al. DNA Res. 5:169-176(1998).

Ohara O., et al. Submitted (AUG-2005) to the EMBL/GenBank/DDBJ databases.

Muzny D.M., et al. Nature 440:1194-1198(2006).

Ota T., et al. Nat. Genet. 36:40-45(2004).