

APCS / Serum Amyloid P / SAP Antibody
Rabbit Polyclonal Antibody
Catalog # ALS17080**Specification**

APCS / Serum Amyloid P / SAP Antibody - Product Information

| | |
|-------------------|------------------------|
| Application | IHC, IF, WB |
| Primary Accession | P02743 |
| Other Accession | 325 |
| Reactivity | Human, Mouse |
| Host | Rabbit |
| Clonality | Polyclonal |
| Isotype | IgG |
| Calculated MW | 25387 |

APCS / Serum Amyloid P / SAP Antibody - Additional Information

Gene ID 325

Other Names

APCS, 9.5S alpha-1-glycoprotein, Amyloid P component, serum, Pentaxin-related, PTX2, Serum Amyloid P, Serum amyloid P-component, SAP

Target/Specificity

Human APCS / Serum Amyloid P / SAP

Reconstitution & Storage

PBS, pH 7.3, 0.02% sodium azide, 50% glycerol. Long term: -80°C; Short term: -20°C. Avoid freeze-thaw cycles.

Precautions

APCS / Serum Amyloid P / SAP Antibody is for research use only and not for use in diagnostic or therapeutic procedures.

APCS / Serum Amyloid P / SAP Antibody - Protein Information

Name APCS

Synonyms PTX2

Function

Can interact with DNA and histones and may scavenge nuclear material released from damaged circulating cells. May also function as a calcium-dependent lectin.

Cellular Location

Secreted.

Tissue Location

Found in serum and urine.

Volume

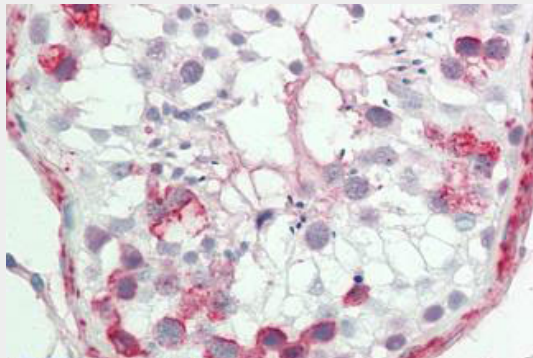
50 μ l

APCS / Serum Amyloid P / SAP Antibody - Protocols

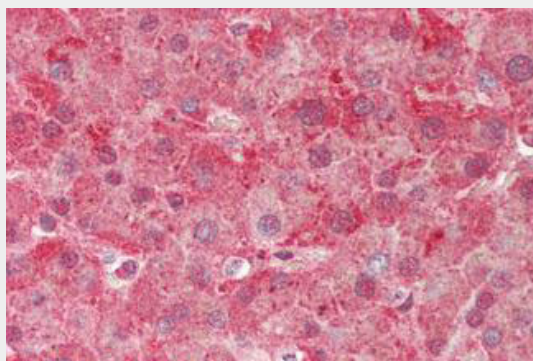
Provided below are standard protocols that you may find useful for product applications.

- [Western Blot](#)
- [Blocking Peptides](#)
- [Dot Blot](#)
- [Immunohistochemistry](#)
- [Immunofluorescence](#)
- [Immunoprecipitation](#)
- [Flow Cytometry](#)
- [Cell Culture](#)

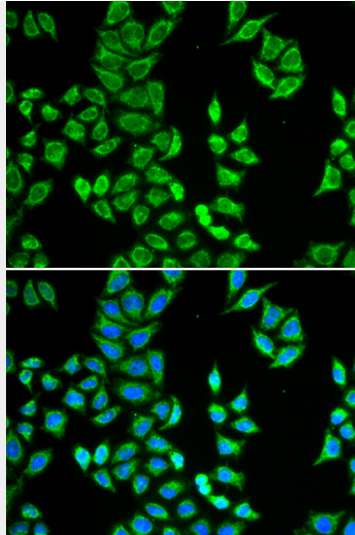
APCS / Serum Amyloid P / SAP Antibody - Images



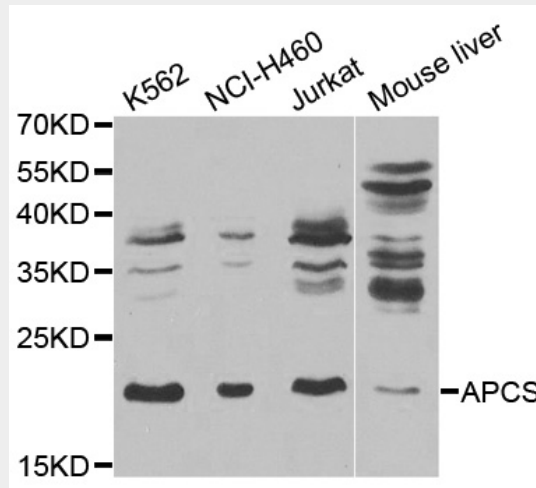
Human Testis: Formalin-Fixed, Paraffin-Embedded (FFPE)



Human Liver: Formalin-Fixed, Paraffin-Embedded (FFPE)



Immunofluorescence analysis of HeLa cells using APCS antibody. Blue: DAPI.



Western blot analysis of extracts of various cell lines, using APCS antibody.

APCS / Serum Amyloid P / SAP Antibody - Background

Can interact with DNA and histones and may scavenge nuclear material released from damaged circulating cells. May also function as a calcium-dependent lectin.

APCS / Serum Amyloid P / SAP Antibody - References

- Mantzouranis E.C., et al. *J. Biol. Chem.* 260:7752-7756(1985).
- Ohnishi S., et al. *J. Biochem.* 100:849-858(1986).
- Kalnine N., et al. Submitted (MAY-2003) to the EMBL/GenBank/DDBJ databases.
- Ebert L., et al. Submitted (MAY-2004) to the EMBL/GenBank/DDBJ databases.
- Gregory S.G., et al. *Nature* 441:315-321(2006).