

**TPM3 Antibody**  
**Rabbit Polyclonal Antibody**  
**Catalog # ALS17075**

**Specification**

---

**TPM3 Antibody - Product Information**

Application	IHC, IF, WB
Primary Accession	<a href="#">P06753</a>
Other Accession	<a href="#">7170</a>
Reactivity	Human, Mouse, Rat
Host	Rabbit
Clonality	Polyclonal
Isotype	IgG
Calculated MW	32950

**TPM3 Antibody - Additional Information**

**Gene ID** 7170

**Other Names**

TPM3, CFTD, Cytoskeletal tropomyosin TM30, Gamma-tropomyosin, NEM1, Hscp30, TM30nm, Tropomyosin alpha-3 chain, TM-5, TM5, TPMsk3, Tropomyosin 3, Tropomyosin-5, TM3, TM30, TRK, Tropomyosin-3, HTM5, OK/SW-cl.5, Tropomyosin gamma

**Target/Specificity**

Human TPM3

**Reconstitution & Storage**

PBS, pH 7.3, 0.02% sodium azide, 50% glycerol. Long term: -80°C; Short term: -20°C. Avoid freeze-thaw cycles.

**Precautions**

TPM3 Antibody is for research use only and not for use in diagnostic or therapeutic procedures.

**TPM3 Antibody - Protein Information**

**Name** TPM3

**Function**

Binds to actin filaments in muscle and non-muscle cells. Plays a central role, in association with the troponin complex, in the calcium dependent regulation of vertebrate striated muscle contraction. Smooth muscle contraction is regulated by interaction with caldesmon. In non-muscle cells is implicated in stabilizing cytoskeleton actin filaments.

**Cellular Location**

Cytoplasm, cytoskeleton.

**Volume**

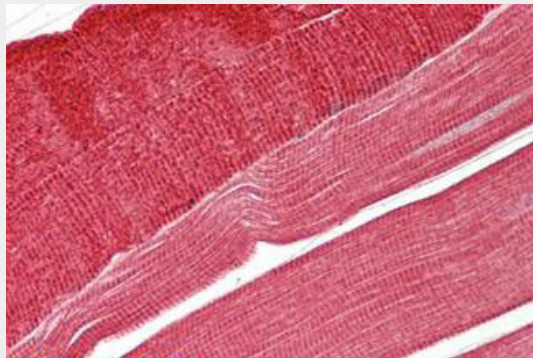
50  $\mu$ l

### TPM3 Antibody - Protocols

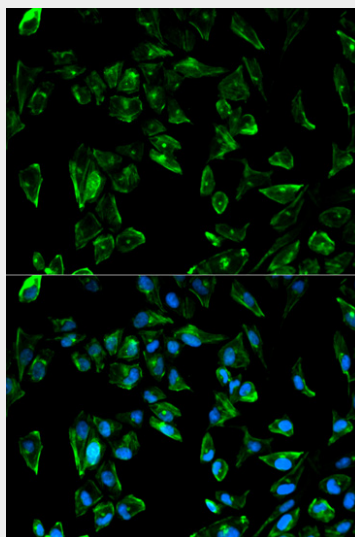
Provided below are standard protocols that you may find useful for product applications.

- [Western Blot](#)
- [Blocking Peptides](#)
- [Dot Blot](#)
- [Immunohistochemistry](#)
- [Immunofluorescence](#)
- [Immunoprecipitation](#)
- [Flow Cytometry](#)
- [Cell Culture](#)

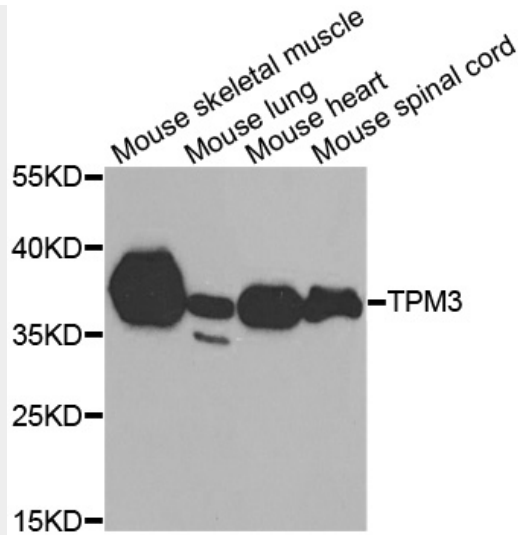
### TPM3 Antibody - Images



Human Skeletal Muscle: Formalin-Fixed, Paraffin-Embedded (FFPE)



Immunofluorescence analysis of HeLa cell using TPM3 antibody. Blue: DAPI for nuclear staining.



Western blot analysis of extracts of various tissues, using TPM3 antibody.

#### **TPM3 Antibody - Background**

Binds to actin filaments in muscle and non-muscle cells. Plays a central role, in association with the troponin complex, in the calcium dependent regulation of vertebrate striated muscle contraction. Smooth muscle contraction is regulated by interaction with caldesmon. In non-muscle cells is implicated in stabilizing cytoskeleton actin filaments.

#### **TPM3 Antibody - References**

Reinach F.C., et al. Nature 322:648-650(1986).  
McLeod A.R., et al. Nucleic Acids Res. 14:8413-8426(1986).  
Clayton L., et al. J. Mol. Biol. 201:507-515(1988).  
Lin J.J.-C., et al. Submitted (JUL-2000) to the EMBL/GenBank/DDBJ databases.  
Gregory S.G., et al. Nature 441:315-321(2006).