

**SRR / Serine Racemase Antibody (aa131-340)**  
**Rabbit Polyclonal Antibody**  
**Catalog # ALS17065**

**Specification**

---

**SRR / Serine Racemase Antibody (aa131-340) - Product Information**

|                   |                        |
|-------------------|------------------------|
| Application       | IHC                    |
| Primary Accession | <a href="#">O9GZT4</a> |
| Other Accession   | <a href="#">63826</a>  |
| Reactivity        | Human                  |
| Host              | Rabbit                 |
| Clonality         | Polyclonal             |
| Isotype           | IgG                    |
| Calculated MW     | 36566                  |

**SRR / Serine Racemase Antibody (aa131-340) - Additional Information**

**Gene ID** 63826

**Other Names**

SRR, D-serine dehydratase, ISO1, L-serine ammonia-lyase, L-serine dehydratase, ILV1, Serine racemase, D-serine ammonia-lyase

**Target/Specificity**

Human SRR / Serine Racemase

**Reconstitution & Storage**

0.1 M Tris-glycine, pH 7, 20% Glycerol, 0.01% Thimerosal. Keep as concentrated solution. Aliquot and store at -20°C or below. Avoid multiple freeze-thaw cycles.

**Precautions**

SRR / Serine Racemase Antibody (aa131-340) is for research use only and not for use in diagnostic or therapeutic procedures.

**SRR / Serine Racemase Antibody (aa131-340) - Protein Information**

**Name** SRR

**Function**

Catalyzes the synthesis of D-serine from L-serine (PubMed:<a href="http://www.uniprot.org/citations/20106978" target="\_blank">20106978</a>, PubMed:<a href="http://www.uniprot.org/citations/23391306" target="\_blank">23391306</a>, PubMed:<a href="http://www.uniprot.org/citations/29277459" target="\_blank">29277459</a>). D-serine is a key coagonist with glutamate at NMDA receptors. Has dehydratase activity towards both L-serine and D-serine (By similarity).

**Tissue Location**

Expressed in the cerebellum, hippocampus, dorsolateral prefrontal cortex, and in motor neurons

and glial cells of the lumbar spinal cord (at protein level) (PubMed:17880399, PubMed:24138986). Increased in the dorsolateral prefrontal cortex of schizophrenic patients (at protein level) (PubMed:17880399). Brain: expressed at high levels in hippocampus and corpus callosum, intermediate levels in substantia nigra and caudate, and low levels in amygdala, thalamus, and subthalamic nuclei (PubMed:15193426). Expressed in heart, skeletal muscle, kidney, and liver (PubMed:15193426)

**Volume**

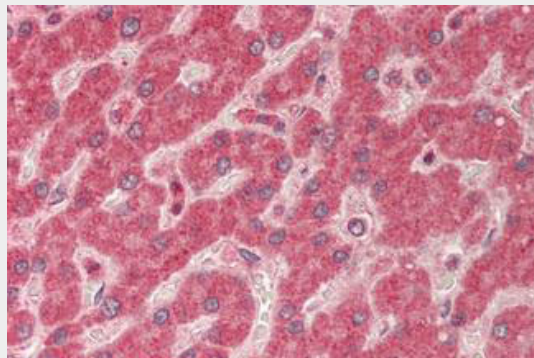
50 µl

**SRR / Serine Racemase Antibody (aa131-340) - Protocols**

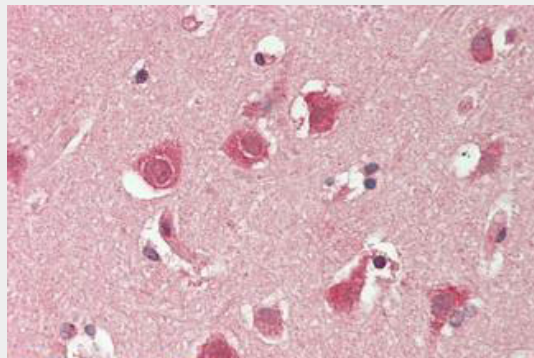
Provided below are standard protocols that you may find useful for product applications.

- [Western Blot](#)
- [Blocking Peptides](#)
- [Dot Blot](#)
- [Immunohistochemistry](#)
- [Immunofluorescence](#)
- [Immunoprecipitation](#)
- [Flow Cytometry](#)
- [Cell Culture](#)

**SRR / Serine Racemase Antibody (aa131-340) - Images**



Human Liver: Formalin-Fixed, Paraffin-Embedded (FFPE)



Human Brain, Cortex: Formalin-Fixed, Paraffin-Embedded (FFPE)

**SRR / Serine Racemase Antibody (aa131-340) - Background**

Catalyzes the synthesis of D-serine from L-serine. D- serine is a key coagonist with glutamate at NMDA receptors. Has dehydratase activity towards both L-serine and D-serine.

**SRR / Serine Racemase Antibody (aa131-340) - References**

De Miranda J.,et al.Gene 256:183-188(2000).

Xia M.,et al.Brain Res. Mol. Brain Res. 125:96-104(2004).

Ota T.,et al.Nat. Genet. 36:40-45(2004).

Ebert L.,et al.Submitted (JUN-2004) to the EMBL/GenBank/DDBJ databases.

Mural R.J.,et al.Submitted (SEP-2005) to the EMBL/GenBank/DDBJ databases.