

FH / Fumarase / MCL Antibody (clone 9G4)
Mouse Monoclonal Antibody
Catalog # ALS17057

Specification

FH / Fumarase / MCL Antibody (clone 9G4) - Product Information

Application	IHC, IF, WB, FC
Primary Accession	P07954
Other Accession	2271
Reactivity	Human, Rat, Dog
Host	Mouse
Clonality	Monoclonal
Isotype	IgG1
Calculated MW	54637

FH / Fumarase / MCL Antibody (clone 9G4) - Additional Information

Gene ID 2271

Other Names

FH, Fumarase, Fumarate hydratase, MCUL1, HLRCC, LRCC, MCL

Target/Specificity

Human FH / Fumarase

Reconstitution & Storage

PBS, pH 7.3, 1% BSA, 50% glycerol, 0.02% sodium azide. Store at -20°C. Minimize freezing and thawing.

Precautions

FH / Fumarase / MCL Antibody (clone 9G4) is for research use only and not for use in diagnostic or therapeutic procedures.

FH / Fumarase / MCL Antibody (clone 9G4) - Protein Information

Name FH {ECO:0000303|PubMed:27037871, ECO:0000312|HGNC:HGNC:3700}

Function

Catalyzes the reversible stereospecific interconversion of fumarate to L-malate (PubMed:30761759). Experiments in other species have demonstrated that specific isoforms of this protein act in defined pathways and favor one direction over the other (Probable).

Cellular Location

[Isoform Mitochondrial]: Mitochondrion

Tissue Location

Expressed in red blood cells; underexpressed in red blood cells (cytoplasm) of patients with

hereditary non-spherocytic hemolytic anemia of unknown etiology.

Volume

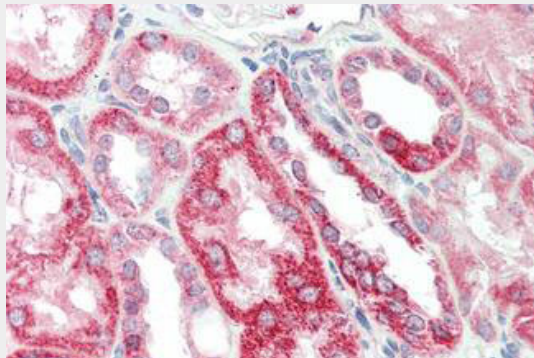
50 μ l

FH / Fumarase / MCL Antibody (clone 9G4) - Protocols

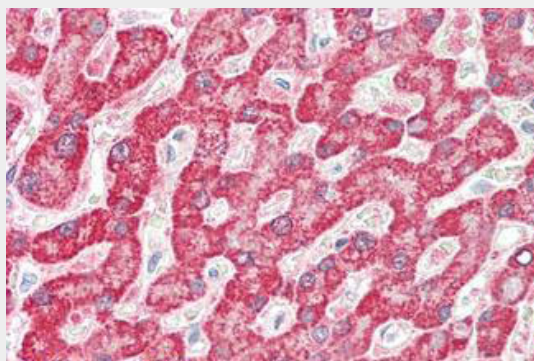
Provided below are standard protocols that you may find useful for product applications.

- [Western Blot](#)
- [Blocking Peptides](#)
- [Dot Blot](#)
- [Immunohistochemistry](#)
- [Immunofluorescence](#)
- [Immunoprecipitation](#)
- [Flow Cytometry](#)
- [Cell Culture](#)

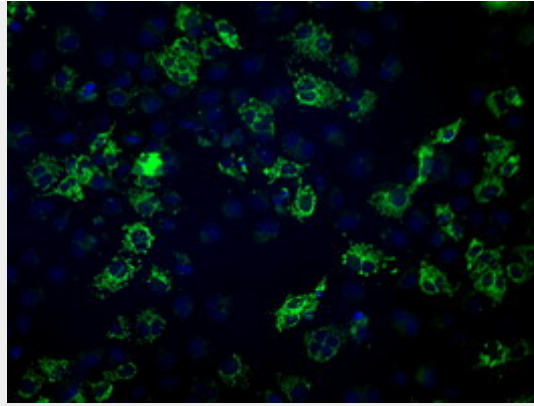
FH / Fumarase / MCL Antibody (clone 9G4) - Images



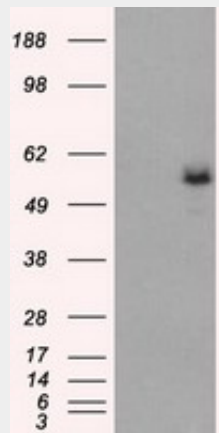
Human Kidney: Formalin-Fixed, Paraffin-Embedded (FFPE)



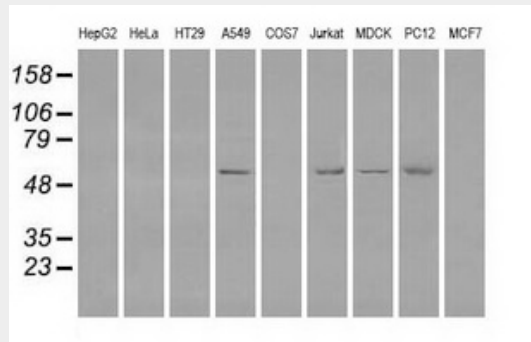
Human Liver: Formalin-Fixed, Paraffin-Embedded (FFPE)



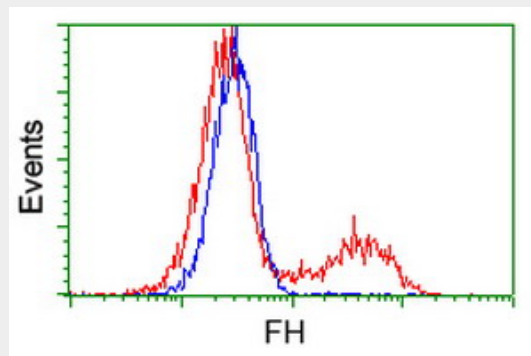
Anti-FH mouse monoclonal antibody immunofluorescent staining of COS7 cells transiently...



HEK293T cells were transfected with the pCMV6-ENTRY control (Left lane) or pCMV6-ENTRY FH (Right...



Western blot of extracts (35 ug) from 9 different cell lines by using anti-FH monoclonal antibody.



HEK293T cells transfected with either overexpress plasmid (Red) or empty vector control plasmid...

FH / Fumarase / MCL Antibody (clone 9G4) - Background

Also acts as a tumor suppressor.

FH / Fumarase / MCL Antibody (clone 9G4) - References

Gellera C., et al. Submitted (MAY-1996) to the EMBL/GenBank/DDBJ databases.
Bourgeron T., et al. Submitted (FEB-1996) to the EMBL/GenBank/DDBJ databases.
Kalnine N., et al. Submitted (AUG-2003) to the EMBL/GenBank/DDBJ databases.
Ota T., et al. Nat. Genet. 36:40-45(2004).
Mural R.J., et al. Submitted (JUL-2005) to the EMBL/GenBank/DDBJ databases.