

**FBLN4 / EFEMP2 Antibody (aa91-140)**  
**Rabbit Polyclonal Antibody**  
**Catalog # ALS17049****Specification**

---

**FBLN4 / EFEMP2 Antibody (aa91-140) - Product Information**

Application	IHC, IF, WB
Primary Accession	<a href="#">O95967</a>
Other Accession	<a href="#">30008</a>
Reactivity	Human
Host	Rabbit
Clonality	Polyclonal
Isotype	IgG
Calculated MW	49405

**FBLN4 / EFEMP2 Antibody (aa91-140) - Additional Information**

**Gene ID** 30008

**Other Names**

EFEMP2, ARCL1B, FIBL-4, Fibulin-4, Fibulin 4, Protein UPH1, MBP1, UPH1, FBLN4, Mutant p53 binding protein 1

**Target/Specificity**

EFEMP2 Antibody detects endogenous levels of total EFEMP2 protein.

**Reconstitution & Storage**

PBS (without Mg<sup>2+</sup>, Ca<sup>2+</sup>), pH 7.4, 150 mM sodium chloride, 0.02% sodium azide, 50% glycerol. Store at -20°C for up to one year.

**Precautions**

FBLN4 / EFEMP2 Antibody (aa91-140) is for research use only and not for use in diagnostic or therapeutic procedures.

**FBLN4 / EFEMP2 Antibody (aa91-140) - Protein Information**

**Name** EFEMP2 ([HGNC:3219](#))

**Synonyms** FBLN4

**Function**

Plays a crucial role in elastic fiber formation in tissue, and in the formation of ultrastructural connections between elastic laminae and smooth muscle cells in the aorta, therefore participates in terminal differentiation and maturation of smooth muscle cell (SMC) and in the mechanical properties and wall integrity maintenance of the aorta (PubMed:<a href="http://www.uniprot.org/citations/27339457" target="\_blank">27339457</a>). In addition, is involved in the control of collagen fibril assembly in tissue through proteolytic activation of LOX leading to cross-linking of collagen and elastin (By similarity). Also promotes ELN coacervation

and participates in the deposition of ELN coacervates on to microfibrils but also regulates ELN cross-linking through LOX interaction (PubMed:<a href="http://www.uniprot.org/citations/18973305" target="\_blank">18973305</a>, PubMed:<a href="http://www.uniprot.org/citations/19570982" target="\_blank">19570982</a>). Moreover adheres to the cells through heparin binding in a calcium-dependent manner and regulates vascular smooth muscle cells proliferation through angiotensin signaling (PubMed:<a href="http://www.uniprot.org/citations/23782690" target="\_blank">23782690</a>).

#### Cellular Location

Secreted, extracellular space, extracellular matrix Secreted, extracellular space, extracellular matrix, basement membrane {ECO:0000250|UniProtKB:Q9WVJ9}. Note=Localizes on the microfibrils surrounding ELN cores. {ECO:0000250|UniProtKB:Q9WVJ9}

#### Volume

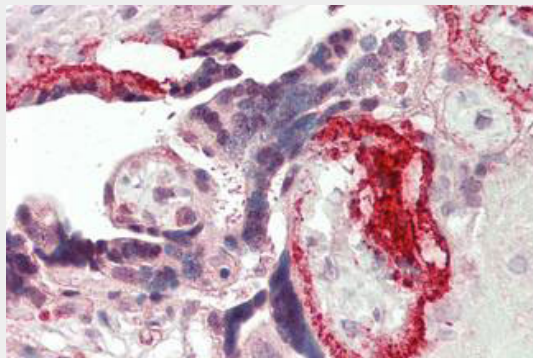
50 µl

#### FBLN4 / EFEMP2 Antibody (aa91-140) - Protocols

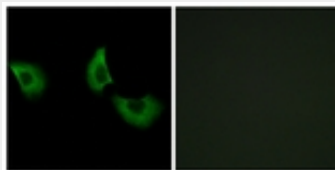
Provided below are standard protocols that you may find useful for product applications.

- [Western Blot](#)
- [Blocking Peptides](#)
- [Dot Blot](#)
- [Immunohistochemistry](#)
- [Immunofluorescence](#)
- [Immunoprecipitation](#)
- [Flow Cytometry](#)
- [Cell Culture](#)

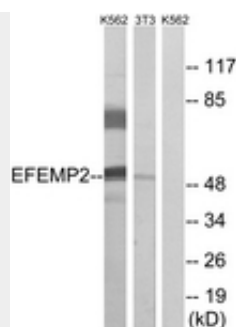
#### FBLN4 / EFEMP2 Antibody (aa91-140) - Images



Human Placenta: Formalin-Fixed, Paraffin-Embedded (FFPE)



Immunofluorescence of A549 cells, using EFEMP2 Antibody.



Western blot of extracts from K562/NIH-3T3 cells, using EFEMP2 Antibody.

#### **FBLN4 / EFEMP2 Antibody (aa91-140) - References**

- Giltay R., et al. *Matrix Biol.* 18:469-480(1999).  
Zemel R., et al. Submitted (SEP-1998) to the EMBL/GenBank/DDBJ databases.  
Katsanis N., et al. *Hum. Genet.* 106:66-72(2000).  
Ota T., et al. *Nat. Genet.* 36:40-45(2004).  
Clark H.F., et al. *Genome Res.* 13:2265-2270(2003).