

**CTSK / Cathepsin K Antibody (aa1-101)**  
**Rabbit Polyclonal Antibody**  
**Catalog # ALS17013****Specification**

---

**CTSK / Cathepsin K Antibody (aa1-101) - Product Information**

Application	IHC
Primary Accession	<a href="#">P43235</a>
Other Accession	<a href="#">1513</a>
Reactivity	Human
Host	Rabbit
Clonality	Polyclonal
Isotype	IgG
Calculated MW	36966

**CTSK / Cathepsin K Antibody (aa1-101) - Additional Information****Gene ID** 1513**Other Names**

CTSK, Cathepsin K, Cathepsin K (pseudodeficiency), Cathepsin O1, Cathepsin O2, Cathepsin X, CTSO2, PKND, Procathepsin K, PYCD, Cathepsin O, CTSO2, CTSO1

**Target/Specificity**

Human CTSK / Cathepsin K.

**Reconstitution & Storage**

0.1 M Tris-glycine, pH 7, 10% Glycerol, 0.01% Thimerosal. Keep as concentrated solution. Aliquot and store at -20°C or below. Avoid multiple freeze-thaw cycles.

**Precautions**

CTSK / Cathepsin K Antibody (aa1-101) is for research use only and not for use in diagnostic or therapeutic procedures.

**CTSK / Cathepsin K Antibody (aa1-101) - Protein Information****Name** CTSK**Synonyms** CTSO, CTSO2**Function**

Thiol protease involved in osteoclastic bone resorption and may participate partially in the disorder of bone remodeling. Displays potent endoprotease activity against fibrinogen at acid pH. May play an important role in extracellular matrix degradation. Involved in the release of thyroid hormone thyroxine (T4) by limited proteolysis of TG/thyroglobulin in the thyroid follicle lumen (PubMed:&lt;a href="http://www.uniprot.org/citations/11082042" target="\_blank"&gt;11082042&lt;/a&gt;).

**Cellular Location**

Lysosome. Secreted. Apical cell membrane; Peripheral membrane protein; Extracellular side.  
Note=Localizes to the lumen of thyroid follicles and to the apical membrane of thyroid epithelial cells

#### **Tissue Location**

Predominantly expressed in osteoclasts (bones) (PubMed:7805878). Expressed in thyroid epithelial cells (PubMed:11082042).

#### **Volume**

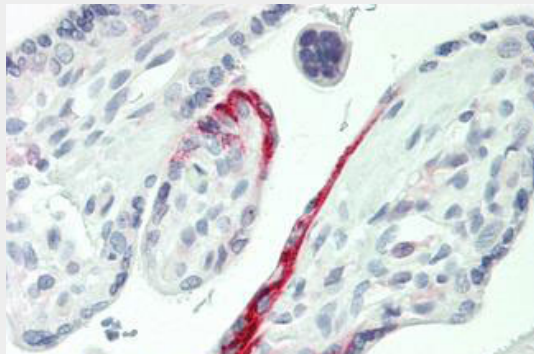
50  $\mu$ l

### **CTSK / Cathepsin K Antibody (aa1-101) - Protocols**

Provided below are standard protocols that you may find useful for product applications.

- [Western Blot](#)
- [Blocking Peptides](#)
- [Dot Blot](#)
- [Immunohistochemistry](#)
- [Immunofluorescence](#)
- [Immunoprecipitation](#)
- [Flow Cytometry](#)
- [Cell Culture](#)

### **CTSK / Cathepsin K Antibody (aa1-101) - Images**



Human Placenta: Formalin-Fixed, Paraffin-Embedded (FFPE)

### **CTSK / Cathepsin K Antibody (aa1-101) - Background**

Closely involved in osteoclastic bone resorption and may participate partially in the disorder of bone remodeling. Displays potent endoprotease activity against fibrinogen at acid pH. May play an important role in extracellular matrix degradation.

### **CTSK / Cathepsin K Antibody (aa1-101) - References**

- Shi G.-P., et al. FEBS Lett. 357:129-134(1995).  
Inaoka T., et al. Biochem. Biophys. Res. Commun. 206:89-96(1995).  
Li Y., et al. J. Bone Miner. Res. 10:1197-1202(1995).  
Broemme D., et al. Biol. Chem. Hoppe-Seyler 376:379-384(1995).  
Ebert L., et al. Submitted (JUN-2004) to the EMBL/GenBank/DDBJ databases.