

Complement C3 Antibody (aa1580-1592)
Goat Polyclonal Antibody
Catalog # ALS16963

Specification

Complement C3 Antibody (aa1580-1592) - Product Information

Application	IHC
Primary Accession	P01024
Other Accession	718
Reactivity	Human, Monkey
Host	Goat
Clonality	Polyclonal
Calculated MW	187148

Complement C3 Antibody (aa1580-1592) - Additional Information

Gene ID 718

Other Names

C3, AHUS5, ARMD9, Complement component C3, CPAMD1, Complement C3, ASP, Complement component 3

Target/Specificity

Human Complement C3. This antibody is expected to recognize the C3 alpha chain, C3b alpha chain and the C3c alpha chain fragment 2.

Reconstitution & Storage

Tris-buffered saline, pH 7.3, 0.5% BSA, 0.02% sodium azide. Store at -20°C. Minimize freezing and thawing.

Precautions

Complement C3 Antibody (aa1580-1592) is for research use only and not for use in diagnostic or therapeutic procedures.

Complement C3 Antibody (aa1580-1592) - Protein Information

Name C3

Synonyms CPAMD1

Function

C3 plays a central role in the activation of the complement system. Its processing by C3 convertase is the central reaction in both classical and alternative complement pathways. After activation C3b can bind covalently, via its reactive thioester, to cell surface carbohydrates or immune aggregates. [C3-beta-c]: Acts as a chemoattractant for neutrophils in chronic inflammation.

Cellular Location

Secreted.

Tissue Location

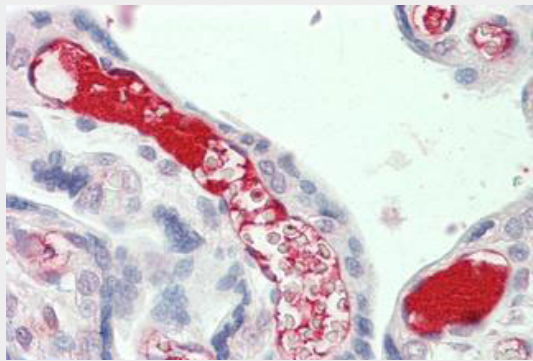
Plasma. The acylation stimulating protein (ASP) is expressed in adipocytes and released into the plasma during both the fasting and postprandial periods.

Complement C3 Antibody (aa1580-1592) - Protocols

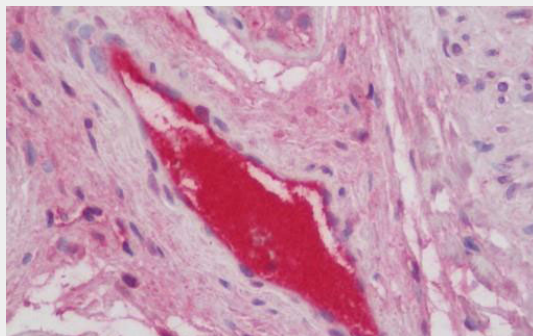
Provided below are standard protocols that you may find useful for product applications.

- [Western Blot](#)
- [Blocking Peptides](#)
- [Dot Blot](#)
- [Immunohistochemistry](#)
- [Immunofluorescence](#)
- [Immunoprecipitation](#)
- [Flow Cytometry](#)
- [Cell Culture](#)

Complement C3 Antibody (aa1580-1592) - Images



Anti-Complement C3 antibody IHC staining of human placenta.



Anti-Complement C3 antibody IHC staining of human testis.

Complement C3 Antibody (aa1580-1592) - Background

C3 plays a central role in the activation of the complement system. Its processing by C3 convertase is the central reaction in both classical and alternative complement pathways. After activation C3b can bind covalently, via its reactive thioester, to cell surface carbohydrates or immune aggregates. C3-beta-c: Acts as a chemoattractant for neutrophils in chronic inflammation.

Complement C3 Antibody (aa1580-1592) - References

- de Bruijn M.H.L.,et al.Proc. Natl. Acad. Sci. U.S.A. 82:708-712(1985).
Mural R.J.,et al.Submitted (SEP-2005) to the EMBL/GenBank/DDBJ databases.
Baldo A.,et al.J. Clin. Invest. 92:1543-1547(1993).
Hugli T.E.,et al.J. Biol. Chem. 250:8293-8301(1975).
Oxvig C.,et al.J. Biol. Chem. 270:13645-13651(1995).