

AIF1 / IBA1 Antibody
Rabbit Polyclonal Antibody
Catalog # ALS16961**Specification**

AIF1 / IBA1 Antibody - Product Information

Application	IHC
Primary Accession	P55008
Other Accession	199
Reactivity	Human, Mouse, Rat
Host	Rabbit
Clonality	Polyclonal
Calculated MW	16703

AIF1 / IBA1 Antibody - Additional Information**Gene ID** 199**Other Names**

AIF1, AIF-1, Em:AF129756.17, G1, IRT-1, Protein G1, IBA1, IRT1

Reconstitution & Storage

PBS, pH 7.4, 0.02% sodium azide. Store at -20°C for up to one year.

Precautions

AIF1 / IBA1 Antibody is for research use only and not for use in diagnostic or therapeutic procedures.

AIF1 / IBA1 Antibody - Protein Information**Name** AIF1**Synonyms** G1, IBA1**Function**

Actin-binding protein that enhances membrane ruffling and RAC activation. Enhances the actin-bundling activity of LCP1. Binds calcium. Plays a role in RAC signaling and in phagocytosis. May play a role in macrophage activation and function. Promotes the proliferation of vascular smooth muscle cells and of T-lymphocytes. Enhances lymphocyte migration. Plays a role in vascular inflammation.

Cellular Location

Cytoplasm, cytoskeleton {ECO:0000250|UniProtKB:O70200}. Cell projection, ruffle membrane {ECO:0000250|UniProtKB:O70200}; Peripheral membrane protein {ECO:0000250|UniProtKB:O70200}; Cytoplasmic side {ECO:0000250|UniProtKB:O70200}. Cell projection, phagocytic cup {ECO:0000250|UniProtKB:O70200}. Note=Associated with the actin cytoskeleton at membrane ruffles and at sites of phagocytosis {ECO:0000250|UniProtKB:O70200}

Tissue Location

Detected in T-lymphocytes and peripheral blood mononuclear cells.

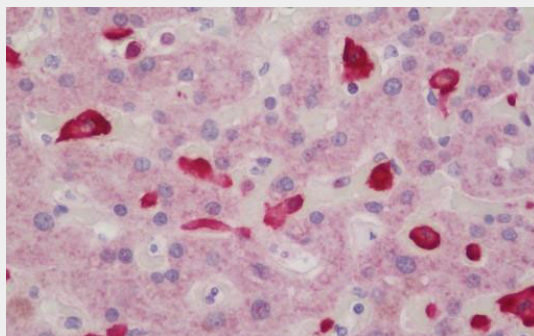
Volume

50 μ l

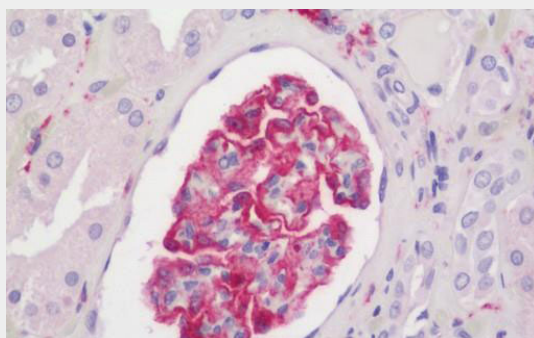
AIF1 / IBA1 Antibody - Protocols

Provided below are standard protocols that you may find useful for product applications.

- [Western Blot](#)
- [Blocking Peptides](#)
- [Dot Blot](#)
- [Immunohistochemistry](#)
- [Immunofluorescence](#)
- [Immunoprecipitation](#)
- [Flow Cytometry](#)
- [Cell Culture](#)

AIF1 / IBA1 Antibody - Images

Anti-AIF1 / IBA1 antibody IHC staining of human liver.



Anti-AIF1 / IBA1 antibody IHC staining of human kidney.

AIF1 / IBA1 Antibody - Background

Actin-binding protein that enhances membrane ruffling and RAC activation. Enhances the actin-bundling activity of LCP1. Binds calcium. Plays a role in RAC signaling and in phagocytosis. May play a role in macrophage activation and function. Promotes the proliferation of vascular smooth muscle cells and of T- lymphocytes. Enhances lymphocyte migration. Plays a role in vascular inflammation.

AIF1 / IBA1 Antibody - References

- Albertella M.R.,et al.Hum. Mol. Genet. 3:793-799(1994).
Holzinger I.,et al.Immunogenetics 42:315-322(1995).
Autieri M.V.,et al.Biochem. Biophys. Res. Commun. 228:29-37(1996).
Utans U.,et al.Transplantation 61:1387-1392(1996).
de Baey A.,et al.Genomics 45:591-600(1997).