

**GSN / Gelsolin Antibody (clone GEL-42)**  
**Mouse Monoclonal Antibody**  
**Catalog # ALS16957**

### Specification

---

#### GSN / Gelsolin Antibody (clone GEL-42) - Product Information

Application	IHC
Primary Accession	<a href="#">P06396</a>
Other Accession	<a href="#">2934</a>
Reactivity	Human, Rabbit, Bovine
Host	Mouse
Clonality	Monoclonal
Isotype	IgG1
Calculated MW	85698

#### GSN / Gelsolin Antibody (clone GEL-42) - Additional Information

Gene ID 2934

##### Other Names

GSN, ADF, AGEL, Brevin, Actin-depolymerizing factor, Gelsolin precursor, plasma, Gelsolin

##### Target/Specificity

Human, rabbit, bovine. No cross reactivity with other proteins.

##### Reconstitution & Storage

1.2% sodium acetate, 2 mg BSA, 0.01 mg sodium azide as preservative. Short term +4°C; Long term -20°C

##### Precautions

GSN / Gelsolin Antibody (clone GEL-42) is for research use only and not for use in diagnostic or therapeutic procedures.

#### GSN / Gelsolin Antibody (clone GEL-42) - Protein Information

Name GSN

##### Function

Calcium-regulated, actin-modulating protein that binds to the plus (or barbed) ends of actin monomers or filaments, preventing monomer exchange (end-blocking or capping). It can promote the assembly of monomers into filaments (nucleation) as well as sever filaments already formed (PubMed: [19666512](http://www.uniprot.org/citations/19666512)). Plays a role in ciliogenesis (PubMed: [20393563](http://www.uniprot.org/citations/20393563)).

##### Cellular Location

[Isoform 2]: Cytoplasm, cytoskeleton.

**Tissue Location**

Phagocytic cells, platelets, fibroblasts, nonmuscle cells, smooth and skeletal muscle cells

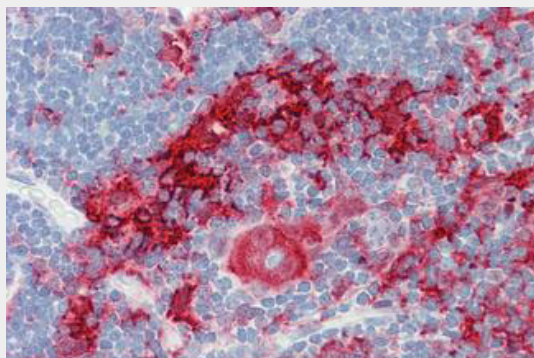
**Volume**

50  $\mu$ l

**GSN / Gelsolin Antibody (clone GEL-42) - Protocols**

Provided below are standard protocols that you may find useful for product applications.

- [Western Blot](#)
- [Blocking Peptides](#)
- [Dot Blot](#)
- [Immunohistochemistry](#)
- [Immunofluorescence](#)
- [Immunoprecipitation](#)
- [Flow Cytometry](#)
- [Cell Culture](#)

**GSN / Gelsolin Antibody (clone GEL-42) - Images**

Anti-GSN / Gelsolin antibody IHC staining of human thymus.

**GSN / Gelsolin Antibody (clone GEL-42) - Background**

Calcium-regulated, actin-modulating protein that binds to the plus (or barbed) ends of actin monomers or filaments, preventing monomer exchange (end-blocking or capping). It can promote the assembly of monomers into filaments (nucleation) as well as sever filaments already formed. Plays a role in ciliogenesis.

**GSN / Gelsolin Antibody (clone GEL-42) - References**

- Kwiatkowski D.J., et al. Nature 323:455-458(1986).  
Ota T., et al. Nat. Genet. 36:40-45(2004).  
Humphray S.J., et al. Nature 429:369-374(2004).  
Mural R.J., et al. Submitted (JUL-2005) to the EMBL/GenBank/DDBJ databases.  
Gevaert K., et al. Nat. Biotechnol. 21:566-569(2003).