

**GPI Antibody (clone 4B11)**  
**Mouse Monoclonal Antibody**  
**Catalog # ALS16950****Specification**

---

**GPI Antibody (clone 4B11) - Product Information**

Application	IHC, IF, WB
Primary Accession	<a href="#">P06744</a>
Other Accession	<a href="#">2821</a>
Reactivity	Human
Host	Mouse
Clonality	Monoclonal
Isotype	IgG1
Calculated MW	63147

**GPI Antibody (clone 4B11) - Additional Information****Gene ID** 2821**Other Names**

GPI, AMF, Autocrine motility factor, Glucose phosphate isomerase, Hexose monophosphate isomerase, Hexosephosphate isomerase, Neuroleukin, Oxoisomerase, Phosphoglucose isomerase, Phosphohexomutase, Phosphohexose isomerase, SA36, PGI, SA-36, Glucose-6- ...

**Target/Specificity**

Human GPI

**Reconstitution & Storage**

PBS, pH 7.3, 1% BSA, 50% glycerol, 0.02% sodium azide. Store at -20°C. Minimize freezing and thawing.

**Precautions**

GPI Antibody (clone 4B11) is for research use only and not for use in diagnostic or therapeutic procedures.

**GPI Antibody (clone 4B11) - Protein Information****Name** GPI {ECO:0000303|PubMed:2387591, ECO:0000312|HGNC:HGNC:4458}**Function**

In the cytoplasm, catalyzes the conversion of glucose-6- phosphate to fructose-6-phosphate, the second step in glycolysis, and the reverse reaction during gluconeogenesis (PubMed:<a href="http://www.uniprot.org/citations/28803808" target="\_blank">28803808</a>). Besides it's role as a glycolytic enzyme, also acts as a secreted cytokine: acts as an angiogenic factor (AMF) that stimulates endothelial cell motility (PubMed:<a href="http://www.uniprot.org/citations/11437381" target="\_blank">11437381</a>). Acts as a neurotrophic factor, neuroleukin, for spinal and sensory neurons (PubMed:<a href="http://www.uniprot.org/citations/11004567" target="\_blank">11004567</a>, PubMed:<a href="http://www.uniprot.org/citations/11004567" target="\_blank">11004567</a>).

[3352745](http://www.uniprot.org/citations/3352745)). It is secreted by lectin-stimulated T-cells and induces immunoglobulin secretion (PubMed:[11004567](http://www.uniprot.org/citations/11004567), PubMed:[3352745](http://www.uniprot.org/citations/3352745)).

#### Cellular Location

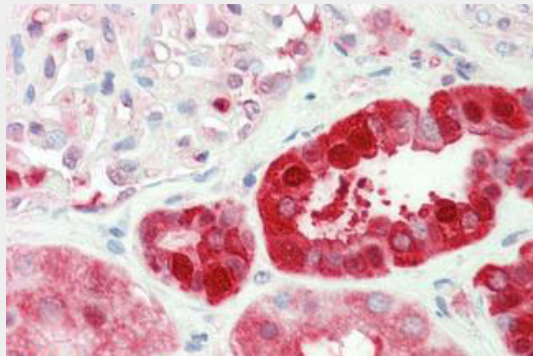
Cytoplasm. Secreted

#### GPI Antibody (clone 4B11) - Protocols

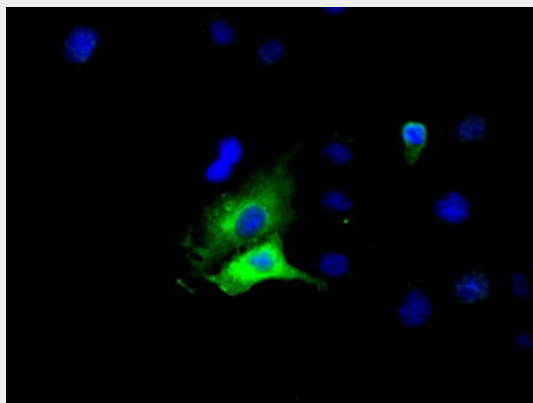
Provided below are standard protocols that you may find useful for product applications.

- [Western Blot](#)
- [Blocking Peptides](#)
- [Dot Blot](#)
- [Immunohistochemistry](#)
- [Immunofluorescence](#)
- [Immunoprecipitation](#)
- [Flow Cytometry](#)
- [Cell Culture](#)

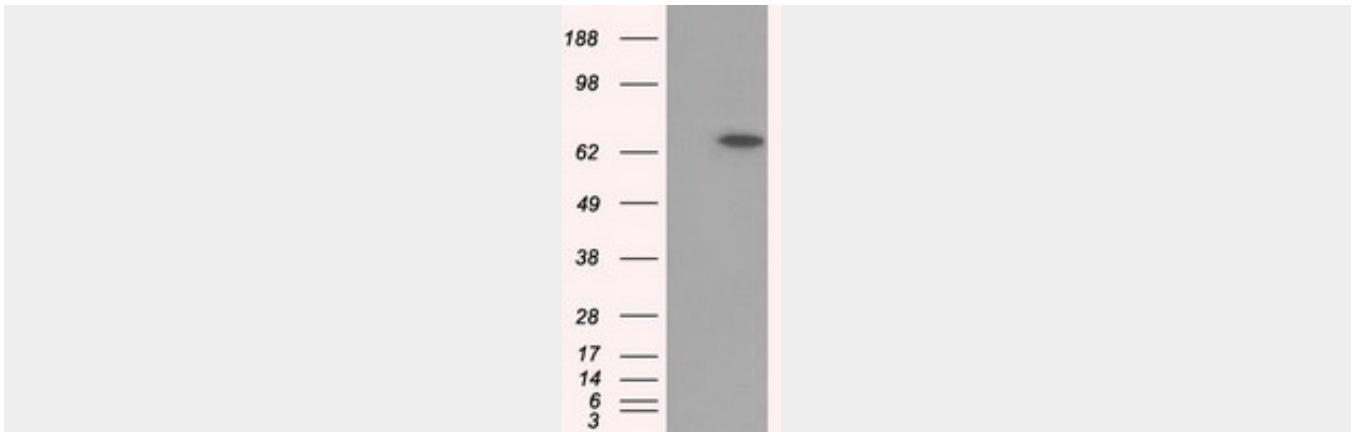
#### GPI Antibody (clone 4B11) - Images



Anti-GPI antibody IHC staining of human kidney.



Anti-GPI mouse monoclonal antibody immunofluorescent staining of COS7 cells transiently...



HEK293T cells were transfected with the pCMV6-ENTRY control (Left lane) or pCMV6-ENTRY GPI...

### **GPI Antibody (clone 4B11) - Background**

Besides its role as a glycolytic enzyme, mammalian GPI can function as a tumor-secreted cytokine and an angiogenic factor (AMF) that stimulates endothelial cell motility. GPI is also a neurotrophic factor (Neuroleukin) for spinal and sensory neurons.

### **GPI Antibody (clone 4B11) - References**

- Gurney M.E., et al. Submitted (MAR-1987) to the EMBL/GenBank/DDBJ databases.
- Yakirevich E., et al. Biol. Reprod. 62:1016-1023(2000).
- Ota T., et al. Nat. Genet. 36:40-45(2004).
- Grimwood J., et al. Nature 428:529-535(2004).
- Walker J.I.H., et al. Genomics 7:638-643(1990).