

SRSF3 / SRP20 Antibody (aa120-170)
Rabbit Polyclonal Antibody
Catalog # ALS16949**Specification**

SRSF3 / SRP20 Antibody (aa120-170) - Product Information

Application	IHC, WB
Primary Accession	P84103
Other Accession	6428
Reactivity	Human, Mouse
Host	Rabbit
Clonality	Polyclonal
Calculated MW	19330

SRSF3 / SRP20 Antibody (aa120-170) - Additional Information**Gene ID** 6428**Other Names**

SRSF3, SRp20, Pre-mRNA-splicing factor SRP20, SFRS3

Target/Specificity

Human SRSF3 / SRP20

Reconstitution & Storage

PBS, pH 7.2, 0.05% sodium azide. Store at 4°C short term. Aliquot and store at -20°C long term. Avoid freeze-thaw cycles.

Precautions

SRSF3 / SRP20 Antibody (aa120-170) is for research use only and not for use in diagnostic or therapeutic procedures.

SRSF3 / SRP20 Antibody (aa120-170) - Protein Information**Name** SRSF3**Synonyms** SFRS3, SRP20**Function**

Splicing factor, which binds the consensus motif 5'- C[ACU][AU]C[ACU][AC]C-3' within pre-mRNA and promotes specific exons inclusion during alternative splicing (PubMed: [17036044](http://www.uniprot.org/citations/17036044), PubMed: [26876937](http://www.uniprot.org/citations/26876937), PubMed: [32440474](http://www.uniprot.org/citations/32440474)). Interaction with YTHDC1, a RNA- binding protein that recognizes and binds N6-methyladenosine (m6A)-containing RNAs, promotes recruitment of SRSF3 to its mRNA-binding elements adjacent to m6A sites within exons (PubMed: [26876937](http://www.uniprot.org/citations/26876937)). Also functions as an adapter involved in mRNA nuclear export

(PubMed:11336712, PubMed:18364396, PubMed:28984244). Binds mRNA which is thought to be transferred to the NXF1-NXT1 heterodimer for export (TAP/NXF1 pathway); enhances NXF1-NXT1 RNA-binding activity (PubMed:11336712, PubMed:18364396). Involved in nuclear export of m6A- containing mRNAs via interaction with YTHDC1: interaction with YTHDC1 facilitates m6A-containing mRNA-binding to both SRSF3 and NXF1, promoting mRNA nuclear export (PubMed:28984244).

Cellular Location

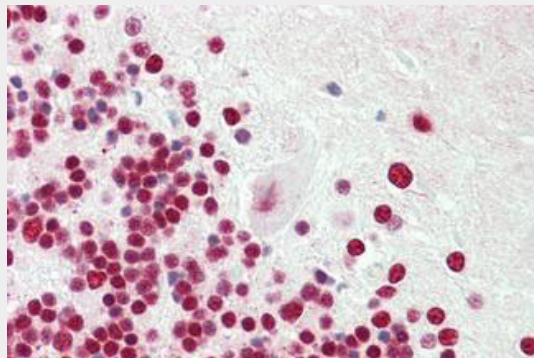
Nucleus. Nucleus speckle. Cytoplasm. Note=Recruited to nuclear speckles following interaction with YTHDC1.

SRSF3 / SRP20 Antibody (aa120-170) - Protocols

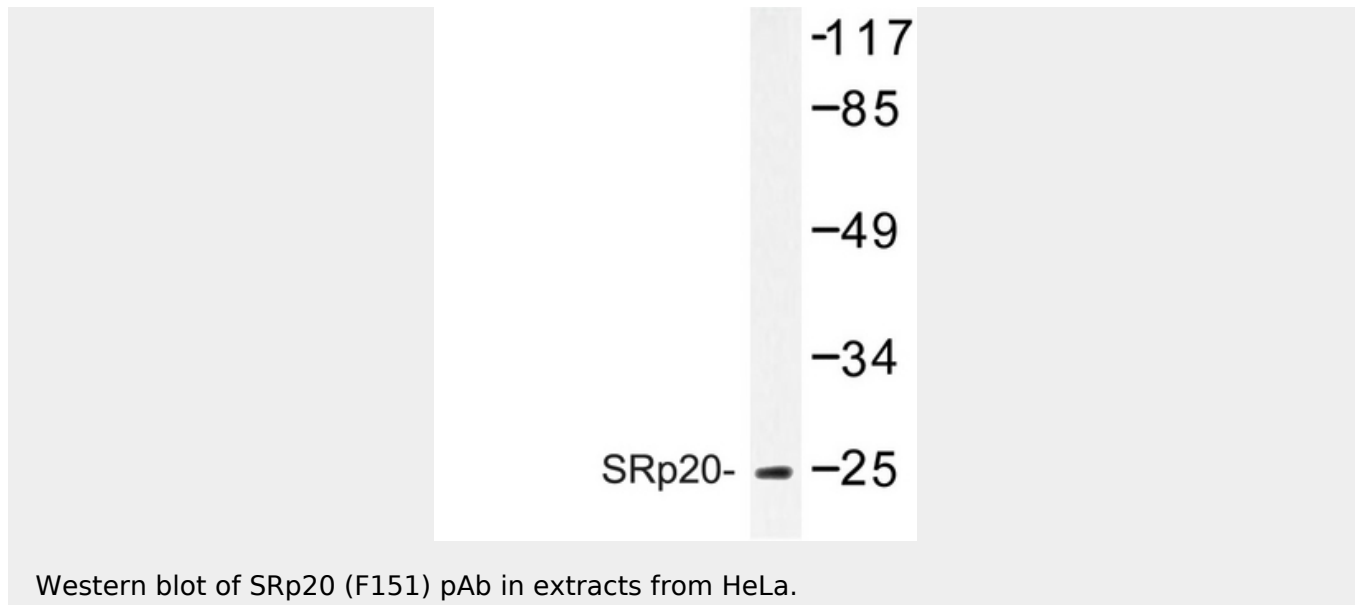
Provided below are standard protocols that you may find useful for product applications.

- [Western Blot](#)
- [Blocking Peptides](#)
- [Dot Blot](#)
- [Immunohistochemistry](#)
- [Immunofluorescence](#)
- [Immunoprecipitation](#)
- [Flow Cytometry](#)
- [Cell Culture](#)

SRSF3 / SRP20 Antibody (aa120-170) - Images



Anti-SRSF3 / SRP20 antibody IHC staining of human brain, cerebellum.



SRSF3 / SRP20 Antibody (aa120-170) - Background

May be involved in RNA processing in relation with cellular proliferation and/or maturation. May function as export adapter involved in mRNA nuclear export such as of histone H2A. Binds mRNA which is thought to be transferred to the NXF1-NXT1 heterodimer for export (TAP/NXF1 pathway); enhances NXF1-NXT1 RNA- binding activity. RNA-binding is semi-sequence specific.

SRSF3 / SRP20 Antibody (aa120-170) - References

- Zahler A.M.,et al.Genes Dev. 6:837-847(1992).
- Liu W.L.,et al.Submitted (NOV-1998) to the EMBL/GenBank/DDBJ databases.
- Ota T.,et al.Nat. Genet. 36:40-45(2004).
- Kalnine N.,et al.Submitted (OCT-2004) to the EMBL/GenBank/DDBJ databases.
- Mungall A.J.,et al.Nature 425:805-811(2003).