

KDEL2 Antibody (aa100-150)
Rabbit Polyclonal Antibody
Catalog # ALS16939**Specification**

KDEL2 Antibody (aa100-150) - Product Information

Application	IHC, WB
Primary Accession	P33947
Other Accession	11014
Reactivity	Human, Mouse, Rat
Host	Rabbit
Clonality	Polyclonal
Calculated MW	24422

KDEL2 Antibody (aa100-150) - Additional Information**Gene ID** 11014**Other Names**

KDEL2, ERD2-like protein 1, ERD2.2, ERD-2-like protein, KDEL receptor 2, ELP-1

Target/Specificity

Human KDEL2

Reconstitution & Storage

PBS, pH 7.2, 0.05% sodium azide. Store at 4°C short term. Aliquot and store at -20°C long term. Avoid freeze-thaw cycles.

Precautions

KDEL2 Antibody (aa100-150) is for research use only and not for use in diagnostic or therapeutic procedures.

KDEL2 Antibody (aa100-150) - Protein Information**Name** KDEL2**Synonyms** ERD2.2 {ECO:0000303|PubMed:1325562}**Function**

Membrane receptor that binds the K-D-E-L sequence motif in the C-terminal part of endoplasmic reticulum resident proteins and maintains their localization in that compartment by participating to their vesicle-mediated recycling back from the Golgi (PubMed:1325562, PubMed:18086916, PubMed:33053334). Binding is pH dependent, and is optimal at pH 5-5.4 (By similarity).

Cellular Location

Endoplasmic reticulum membrane; Multi-pass membrane protein {ECO:0000250|UniProtKB:Q5ZKX9}. Golgi apparatus membrane; Multi-pass membrane protein {ECO:0000250|UniProtKB:Q5ZKX9}. Cytoplasmic vesicle, COPI-coated vesicle membrane; Multi-pass membrane protein {ECO:0000250|UniProtKB:Q5ZKX9} Note=Localized in the Golgi in the absence of bound proteins with the sequence motif K-D-E-L. Trafficks back to the endoplasmic reticulum together with cargo proteins containing the sequence motif K-D-E-L

KDEL2 Antibody (aa100-150) - Protocols

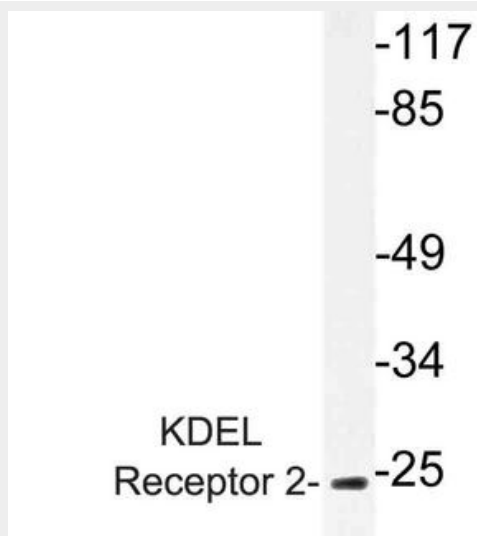
Provided below are standard protocols that you may find useful for product applications.

- [Western Blot](#)
- [Blocking Peptides](#)
- [Dot Blot](#)
- [Immunohistochemistry](#)
- [Immunofluorescence](#)
- [Immunoprecipitation](#)
- [Flow Cytometry](#)
- [Cell Culture](#)

KDEL2 Antibody (aa100-150) - Images



Anti-KDEL2 antibody IHC staining of human kidney.



Western blot of KDEL Receptor 2 (L119) pAb in extracts from HUVEC cells.

KDEL2 Antibody (aa100-150) - Background

Required for the retention of luminal endoplasmic reticulum proteins. Determines the specificity of the luminal ER protein retention system. Also required for normal vesicular traffic through the Golgi. This receptor recognizes K-D-E-L.

KDEL2 Antibody (aa100-150) - References

Lewis M.J., et al. J. Mol. Biol. 226:913-916(1992).
Hsu V.W., et al. Cell 69:625-635(1992).
Ota T., et al. Nat. Genet. 36:40-45(2004).
Hillier L.W., et al. Nature 424:157-164(2003).
Scherer S.W., et al. Science 300:767-772(2003).