

KDEL Tetrapeptide Antibody (clone 1D5)
Mouse Monoclonal Antibody
Catalog # ALS16936

Specification

KDEL Tetrapeptide Antibody (clone 1D5) - Product Information

Application	IHC, ICC, WB
Reactivity	Human, Mouse, Rat, Hamster
Host	Mouse
Clonality	Monoclonal
Isotype	IgG2a,k

KDEL Tetrapeptide Antibody (clone 1D5) - Additional Information

Target/Specificity
KDEL Tetrapeptide

Reconstitution & Storage
PBS, pH 7.2, 50% glycerol. Store at -20°C.

Precautions
KDEL Tetrapeptide Antibody (clone 1D5) is for research use only and not for use in diagnostic or therapeutic procedures.

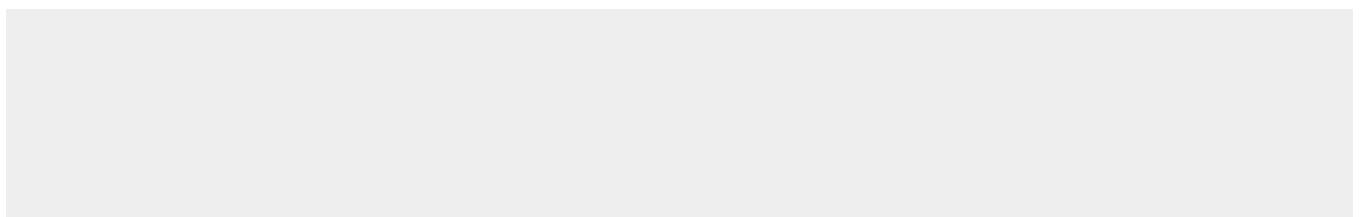
KDEL Tetrapeptide Antibody (clone 1D5) - Protein Information

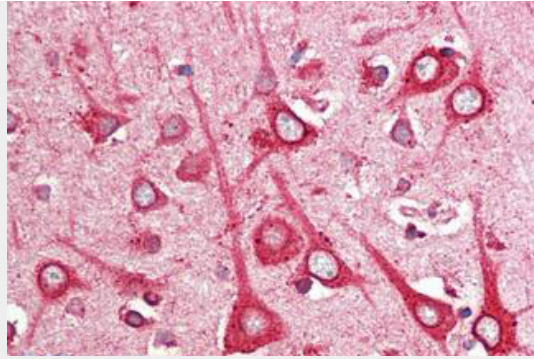
KDEL Tetrapeptide Antibody (clone 1D5) - Protocols

Provided below are standard protocols that you may find useful for product applications.

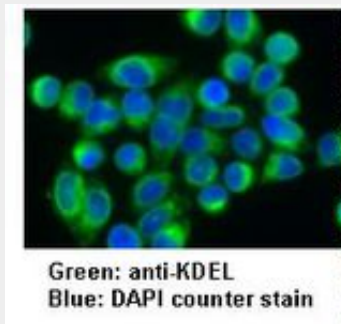
- [Western Blot](#)
- [Blocking Peptides](#)
- [Dot Blot](#)
- [Immunohistochemistry](#)
- [Immunofluorescence](#)
- [Immunoprecipitation](#)
- [Flow Cytometry](#)
- [Cell Culture](#)

KDEL Tetrapeptide Antibody (clone 1D5) - Images

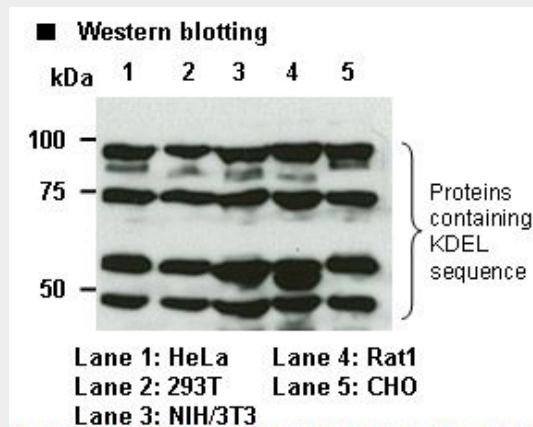




Anti-KDEL Tetrapeptide antibody IHC staining of human brain, cortex.



Green: anti-KDEL Blue: DAPI counter stain



western blotting