

**ENO1 / Alpha Enolase Antibody (aa199-434)**  
**Rabbit Polyclonal Antibody**  
**Catalog # ALS16935****Specification**

---

**ENO1 / Alpha Enolase Antibody (aa199-434) - Product Information**

Application	IHC, ICC, WB
Primary Accession	<a href="#">P06733</a>
Other Accession	<a href="#">2023</a>
Reactivity	Human, Mouse
Host	Rabbit
Clonality	Polyclonal
Calculated MW	47169

**ENO1 / Alpha Enolase Antibody (aa199-434) - Additional Information****Gene ID** 2023**Other Names**

ENO1, Alpha Enolase, Alpha enolase like 1, ENO1L1, Enolase 1, MBP-1, MBPB1, MPB1, MYC promoter-binding protein 1, NNE, Phosphopyruvate hydratase, Alpha-enolase, Tau-crystallin, MBP1, MPB-1, C-myc promoter-binding protein, Enolase 1, (alpha), Enolase- ...

**Target/Specificity**

Human ENO1 / Alpha Enolase

**Reconstitution & Storage**

0.1 M Tris-glycine, pH 7.0, 10% glycerol, 0.01% Thimerosal. Keep as concentrated solution. Aliquot and store at -20°C or below. Avoid multiple freeze-thaw cycles.

**Precautions**

ENO1 / Alpha Enolase Antibody (aa199-434) is for research use only and not for use in diagnostic or therapeutic procedures.

**ENO1 / Alpha Enolase Antibody (aa199-434) - Protein Information****Name** ENO1**Synonyms** ENO1L1, MBPB1, MPB1**Function**

Glycolytic enzyme that catalyzes the conversion of 2-phosphoglycerate to phosphoenolpyruvate (PubMed: [1369209](http://www.uniprot.org/citations/1369209), PubMed: [29775581](http://www.uniprot.org/citations/29775581)). In addition to glycolysis, involved in various processes such as growth control, hypoxia tolerance and allergic responses (PubMed: [10802057](http://www.uniprot.org/citations/10802057), PubMed: [12666133](http://www.uniprot.org/citations/12666133), PubMed: [2005901](http://www.uniprot.org/citations/2005901))

target="\_blank">2005901</a>, PubMed:<a href="http://www.uniprot.org/citations/29775581" target="\_blank">29775581</a>). May also function in the intravascular and pericellular fibrinolytic system due to its ability to serve as a receptor and activator of plasminogen on the cell surface of several cell-types such as leukocytes and neurons (PubMed:<a href="http://www.uniprot.org/citations/12666133" target="\_blank">12666133</a>). Stimulates immunoglobulin production (PubMed:<a href="http://www.uniprot.org/citations/1369209" target="\_blank">1369209</a>).

#### Cellular Location

Cytoplasm. Cell membrane. Cytoplasm, myofibril, sarcomere, M line. Note=Can translocate to the plasma membrane in either the homodimeric (alpha/alpha) or heterodimeric (alpha/gamma) form. ENO1 is localized to the M line

#### Tissue Location

The alpha/alpha homodimer is expressed in embryo and in most adult tissues. The alpha/beta heterodimer and the beta/beta homodimer are found in striated muscle, and the alpha/gamma heterodimer and the gamma/gamma homodimer in neurons

#### Volume

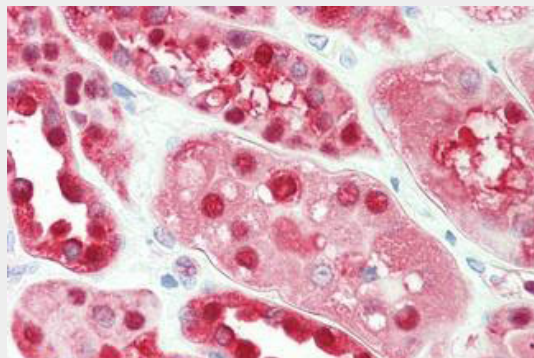
50 µl

#### ENO1 / Alpha Enolase Antibody (aa199-434) - Protocols

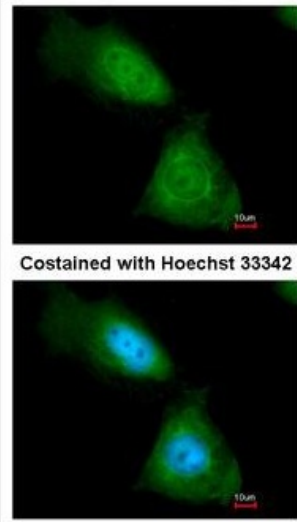
Provided below are standard protocols that you may find useful for product applications.

- [Western Blot](#)
- [Blocking Peptides](#)
- [Dot Blot](#)
- [Immunohistochemistry](#)
- [Immunofluorescence](#)
- [Immunoprecipitation](#)
- [Flow Cytometry](#)
- [Cell Culture](#)

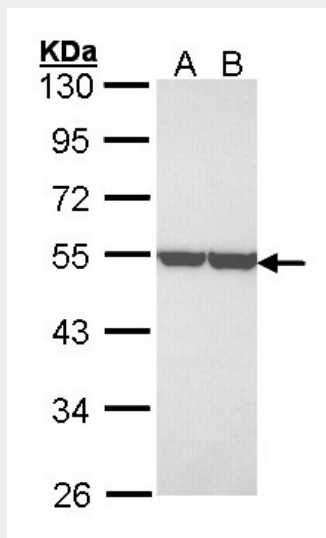
#### ENO1 / Alpha Enolase Antibody (aa199-434) - Images



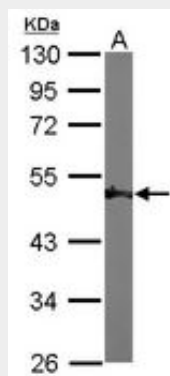
Anti-ENO1 / Alpha Enolase antibody IHC staining of human kidney.



Immunofluorescence of paraformaldehyde-fixed HeLa using enolase 1 antibody at 1:200 dilution.



Sample (30 µg of whole cell lysate).



Sample (50 µg of whole cell lysate).

**ENO1 / Alpha Enolase Antibody (aa199-434) - Background**

Multifunctional enzyme that, as well as its role in glycolysis, plays a part in various processes such as growth control, hypoxia tolerance and allergic responses. May also function in the intravascular and pericellular fibrinolytic system due to its ability to serve as a receptor and activator of

plasminogen on the cell surface of several cell-types such as leukocytes and neurons. Stimulates immunoglobulin production.

#### **ENO1 / Alpha Enolase Antibody (aa199-434) - References**

- Giallongo A., et al. Proc. Natl. Acad. Sci. U.S.A. 83:6741-6745(1986).  
Giallongo A., et al. Eur. J. Biochem. 190:567-573(1990).  
Ray R., et al. Mol. Cell. Biol. 11:2154-2161(1991).  
Walter M., et al. J. Autoimmun. 8:931-945(1995).  
Kalnina N., et al. Submitted (MAY-2003) to the EMBL/GenBank/DDBJ databases.