

LTA / TNF Beta Antibody (aa31-80)
Rabbit Polyclonal Antibody
Catalog # ALS16922**Specification**

LTA / TNF Beta Antibody (aa31-80) - Product Information

Application	IHC, WB
Primary Accession	P01374
Other Accession	4049
Reactivity	Human, Mouse, Rat
Host	Rabbit
Clonality	Polyclonal
Calculated MW	22297

LTA / TNF Beta Antibody (aa31-80) - Additional Information**Gene ID** 4049**Other Names**

LTA, Lymphotoxin-alpha, LT-alpha, TNFSF1, TNF-beta, TNFB, Tumor necrosis factor beta, LT, TNF Beta

Target/Specificity

Human TNF Beta

Reconstitution & Storage

PBS, pH 7.2, 0.05% sodium azide. Store at 4°C short term. Aliquot and store at -20°C long term. Avoid freeze-thaw cycles.

Precautions

LTA / TNF Beta Antibody (aa31-80) is for research use only and not for use in diagnostic or therapeutic procedures.

LTA / TNF Beta Antibody (aa31-80) - Protein Information**Name** LTA**Synonyms** TNFB, TNFSF1**Function**Cytokine that in its homotrimeric form binds to TNFRSF1A/TNFR1, TNFRSF1B/TNFBFR and TNFRSF14/HVEM (PubMed: [9462508](http://www.uniprot.org/citations/9462508)). In its heterotrimeric form with LTB binds to TNFRSF3/LTBR (PubMed: [24248355](http://www.uniprot.org/citations/24248355)). Lymphotoxin is produced by lymphocytes and is cytotoxic for a wide range of tumor cells in vitro and in vivo.**Cellular Location**

Secreted. Membrane. Note=The homotrimer is secreted. The heterotrimer is membrane-associated

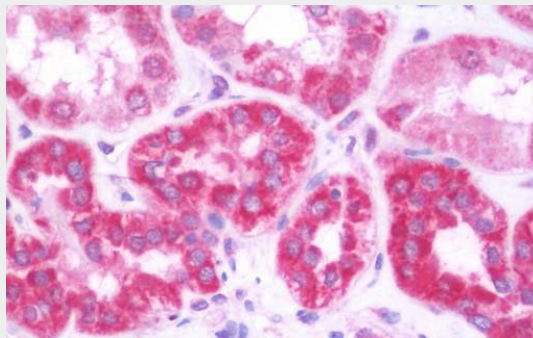
Volume
50 μ l

LTA / TNF Beta Antibody (aa31-80) - Protocols

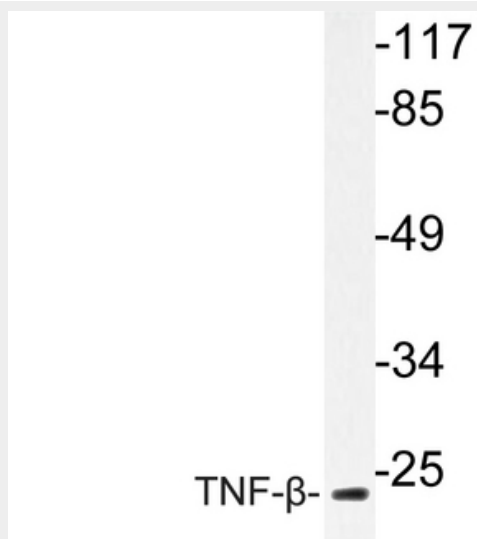
Provided below are standard protocols that you may find useful for product applications.

- [Western Blot](#)
- [Blocking Peptides](#)
- [Dot Blot](#)
- [Immunohistochemistry](#)
- [Immunofluorescence](#)
- [Immunoprecipitation](#)
- [Flow Cytometry](#)
- [Cell Culture](#)

LTA / TNF Beta Antibody (aa31-80) - Images



Anti-LTA / TNF Beta antibody IHC staining of human kidney.



Western blot of TNF- (H66) pAb in extracts from COS-7 cells.

LTA / TNF Beta Antibody (aa31-80) - Background

Cytokine that in its homotrimeric form binds to TNFRSF1A/TNFR1, TNFRSF1B/TNFR and TNFRSF14/HVEM. In its heterotrimeric form with LTB binds to TNFRSF3/LTBR. Lymphotoxin is produced by lymphocytes and cytotoxic for a wide range of tumor cells in vitro and in vivo.

LTA / TNF Beta Antibody (aa31-80) - References

- Nedospasov S.A., et al. Cold Spring Harb. Symp. Quant. Biol. 51:611-624(1986).
Nedwin G.E., et al. J. Cell. Biochem. 29:171-181(1985).
Kobayashi Y., et al. J. Biochem. 100:727-733(1986).
Gray P.W., et al. Nature 312:721-724(1984).
Matsuyama N., et al. FEBS Lett. 302:141-144(1992).